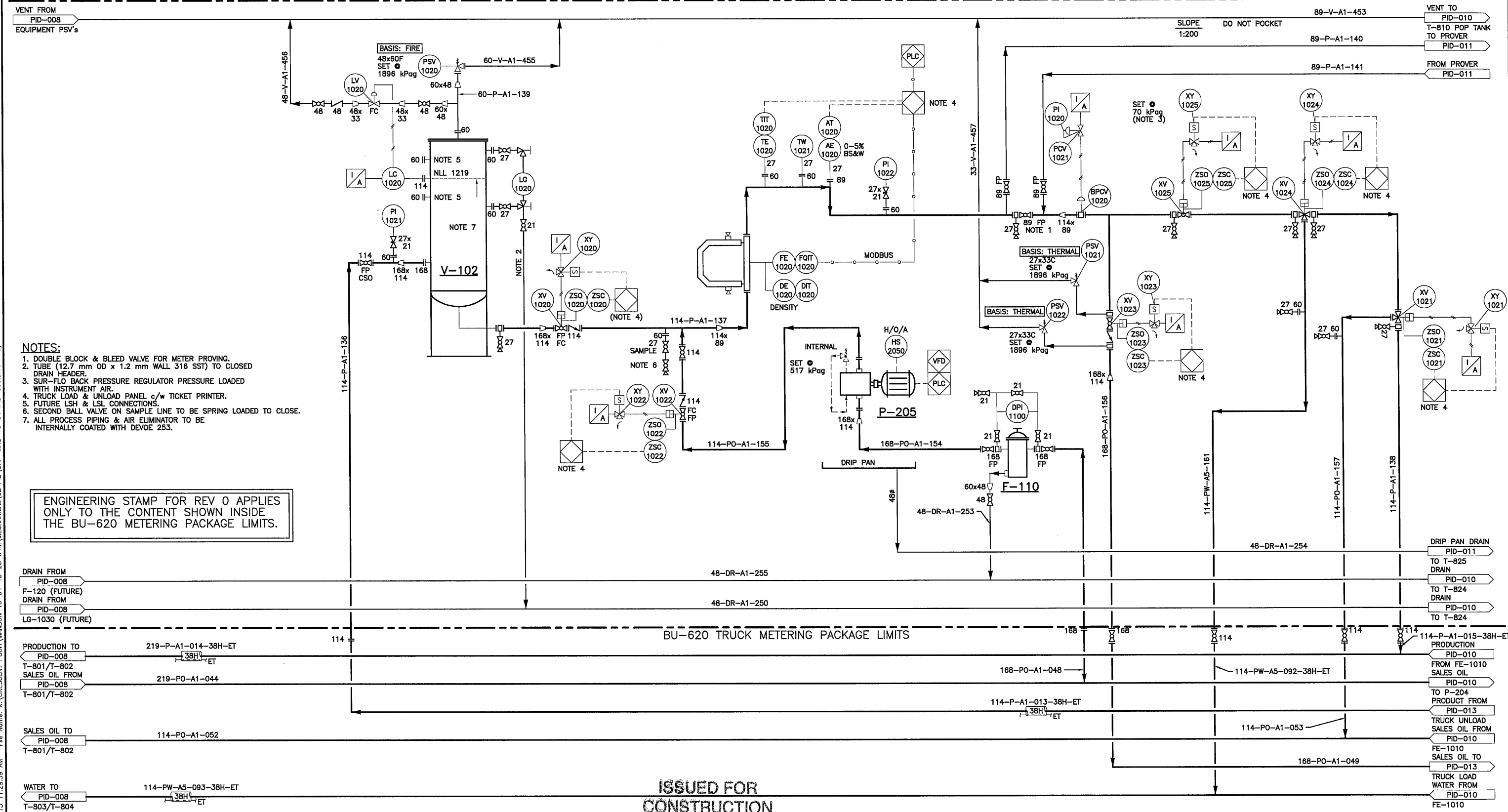


V-102
AIR ELIMINATOR
 D.P.: 1965 kPag @ 38°C
 SIZE: 508 mm OD x 1524 mm S/S
 C.A.: 3.0 mm

P-205
TRUCK LOADING PUMP
 RATED FLOW: 77.5 m³/h @ 345 kPa dP
 MOTOR: 30 HP/22.4 kW
 POWER: 575 VAC, 3 PHASE, 60 Hz

F-110
SUCTION STRAINER
 4" BF 150 QR
 STAINLESS STEEL BASKET c/w 3.2mm PREF.
 MAWP: 1965 kPag @ 38°C



- NOTES:**
- DOUBLE BLOCK & BLEED VALVE FOR METER PROVING.
 - TUBE (12.7 mm OD x 1.2 mm WALL 316 SST) TO CLOSED DRAIN HEADER.
 - SUR-FLO BACK PRESSURE REGULATOR PRESSURE LOADED WITH INSTRUMENT AIR.
 - TRUCK LOAD & UNLOAD PANEL c/w TICKET PRINTER.
 - FUTURE LSH & LSL CONNECTIONS.
 - SECOND BALL VALVE ON SAMPLE LINE TO BE SPRING LOADED TO CLOSE.
 - ALL PROCESS PIPING & AIR ELIMINATOR TO BE INTERNALLY COATED WITH DEVOE 253.

ENGINEERING STAMP FOR REV 0 APPLIES ONLY TO THE CONTENT SHOWN INSIDE THE BU-620 METERING PACKAGE LIMITS.

ISSUED FOR CONSTRUCTION

OCT 23 2013

REFERENCE DRAWING	DESCRIPTION

PROVINCE OF MANITOBA
REGISTERED PROFESSIONAL ENGINEER
ZOYMAN
 Member 33892

APEGM
 Certificate of Authorization
 Tridyne Projects Corporation
 No. 4854 Date 08/23/13

PROJ. No.	REV.	REVISION DESCRIPTION	DATE	BY	CHK'D	APP'D
2012126	0	ISSUED FOR METER BUILDING CONSTRUCTION	2013.10.23	RAC	lm	

TRIDYNE PROJ. No.: 2012126
DATE: 2012.11.20
DRAWN BY: BH
CHECKED:
APPROVED:

Crescent Point ENERGY CORP

TRIDYNE PROJECTS CORPORATION

MANSON BATTERY	
LSD: 16-04-13-28 W1M	
MANSON BATTERY TRUCK STATION - METER BUILDING PIPING & INSTRUMENTATION DIAGRAM	
SCALE (D-SIZE): NONE	DWG No.: CRP-MNS-16-04-PID-009
REV. 0	

Plot Date: Wednesday, 23 October 2013 11:29:59 AM File Name: X:\CRESCENT POINT\MANSON 16-04-13-28 W1M\MECHANICAL\02 PID\CRP-MNS-16-04-PID-009.DWG By: RC