

**SWEETENING SKID**
**UNIT: SS09**
**PERFORMANCE (subject to process review)**

Inlet H <sub>2</sub> S Concentration	200 – 10,000 ppm
Outlet H <sub>2</sub> S Concentration	< 0.5 ppm
Nominal Pipeline Pressure	30 – 1,300 psi (207 – 8,960 kPa)
Gas Flow Rate	1.92 – 36.4 mmscfd (54.4-1032 e <sup>3</sup> m <sup>3</sup> /d)
Gas Temperature	59°F - 86°F (15°C – 30°C)
Pressure Relief Valves Max Flow Rate	

Pressure psig	Pressure (kPag)	Max Flow mmscfd	Max Flow (e <sup>3</sup> m <sup>3</sup> /d)	Max H <sub>2</sub> S ppm	Note
Pressure	Max H <sub>2</sub> S	Ideal	Max H <sub>2</sub> S	Flow Upper	
PSIG	ppm	MMSCFD	ppm	MMSCFD	
30	5697.1	1.1	4165.6	1.5	
50	3936.0	1.6	2877.9	2.1	
100	2220.2	2.9	1623.4	3.7	
200	1186.1	5.4	867.3	7.0	
300	809.2	7.9	591.7	10.2	
400	614.1	10.4	449.0	13.5	
500	494.8	13.0	361.8	16.7	
600	414.3	15.5	302.9	20.0	
700	356.3	18.0	260.5	23.2	
800	312.6	20.5	228.6	26.5	
900	278.4	23.0	203.6	29.7	
1000	251.0	25.6	183.5	33.0	
1100	228.5	28.1	167.0	33.0	
1200	209.6	30.6	153.3	33.0	
1300	193.7	33.1	141.6		Limited by PSV Capacity
1400	180.0	35.6	131.6		Limited by PSV Capacity

**DESIGN CRITERIA**

Maximum Operating Pressure	1440 psi (9,928kPa)
Minimum/Maximum Rated Operating Temperature	-20°F/130°F (-29°C/54°C)

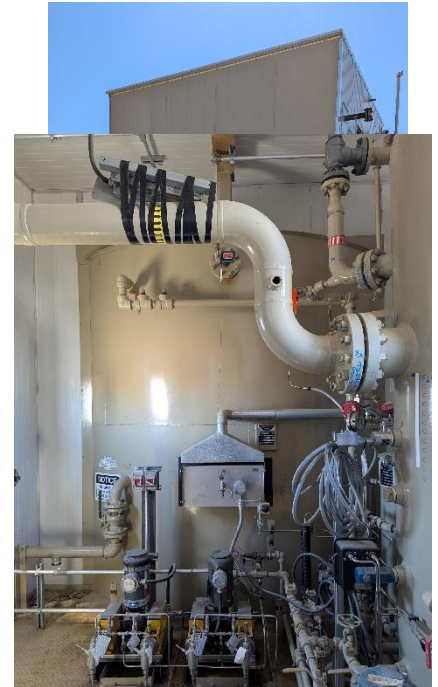
**CONTACTOR VESSEL**

Radiography	Full RT-1
PWHT	Yes
Corrosion Allowance	1/8" (3.2 mm)
Sour Service	Yes
Vessel Diameter	48" (1220 mm)
Vessel Length S/S	12' (3,658 mm)

Nozzle Rating	CL 600 RF
Inlet / Outlet Nozzle Size	6" (168 mm)

**SEPARATOR VESSEL**

Radiography	Spot RT-2
PWHT	No
Corrosion Allowance	1/16" (1.6 mm)
Sour Service	No
# Phases	2
Vessel Diameter	36"
Vessel Length S/S	7'6" (
Nozzle Rating	CL 600 RF
Inlet Nozzle Size	6"
Gas Outlet Nozzle Size	6"
Drain Nozzle Size	2"


**CHEMICAL TANKS**

Fresh Chemical Capacity	Offskid Supplied
Spent Chemical Capacity	200 BBL (31.9 m <sup>3</sup> )
Double Walled	Yes
Flange Rating	CL 150 RF
Truck Inlet / Outlet Size	3" (88.9 mm)

**INCLUDED EQUIPMENT**

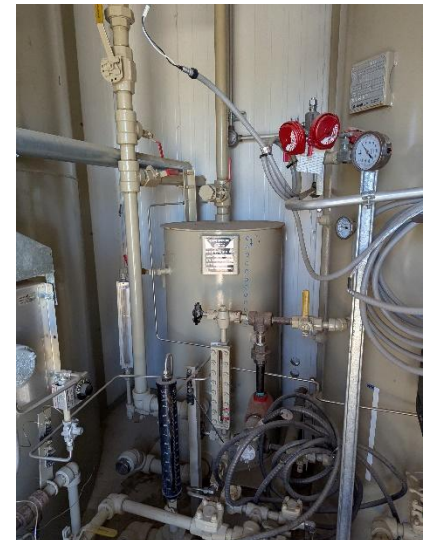
Fuel Gas Scrubber (8" x 48")	N/A
Chemical Pumps	
H <sub>2</sub> S Analyzer	Envent 330, single stream
Meter Run & Orifice Meter	
Pressure Control Valve	CVS 4" CL600
Catalytic Heaters	Ruffneck FX5 Electric

**SHIPPING DIMENSIONS**

Width	12'
Length	26'
Height	12' 4"
Weight Estimate	TBD

**CERTIFICATION**

Vessels	ASME Sec. VIII Div. 1
---------	-----------------------





## EQUIPMENT SPECIFICATION SHEET

Piping	ASME B31.3
Province(s) of Registration	AB, BC, SK