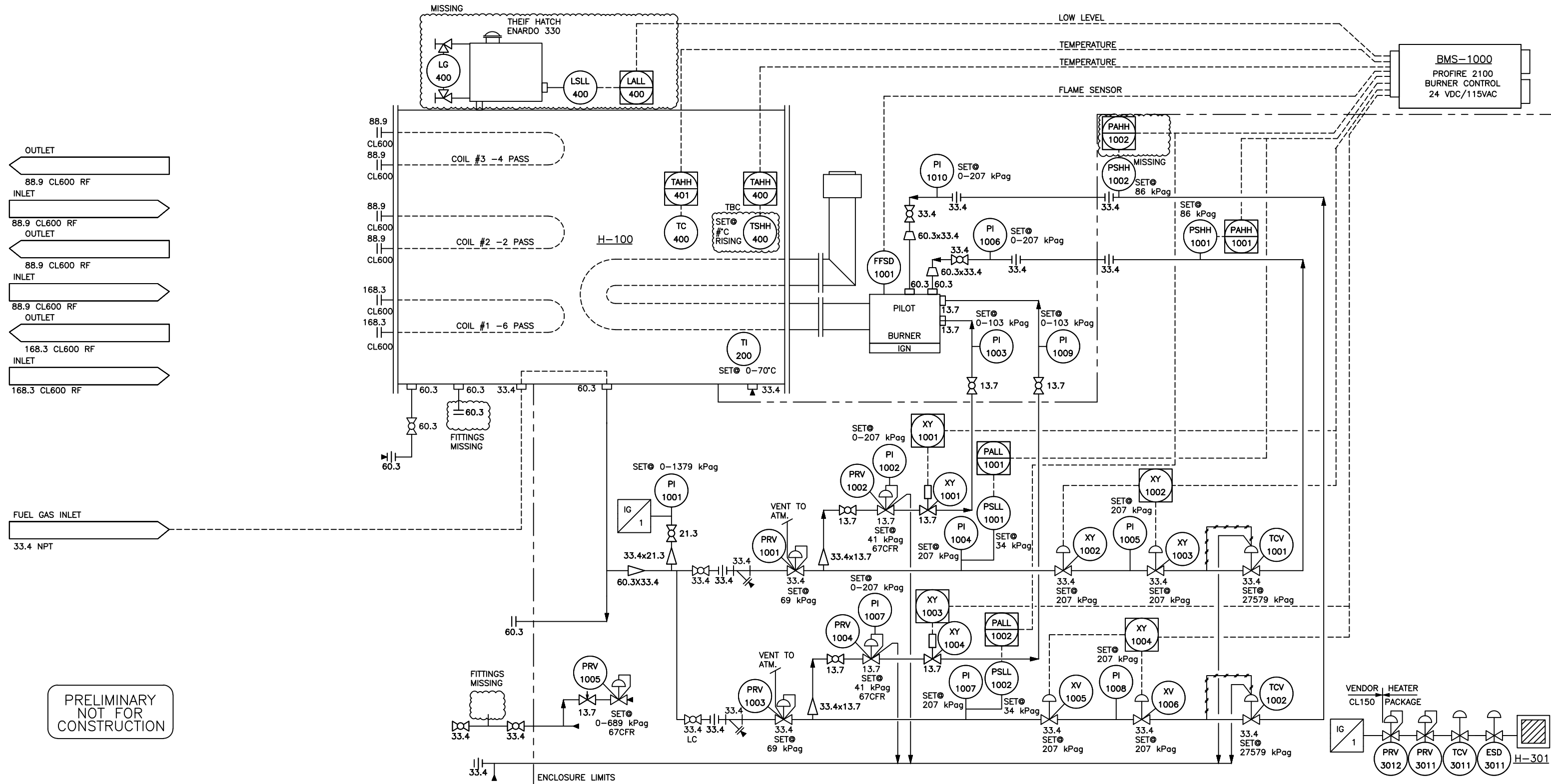


**H-100  
LINE HEATER**  
 BTU RATING: 8 MMBTU/HR  
 SIZE: 2895mm x 10973mm (9'-6" x 36')  
 MAWP: 9308 kPag @ 93°C  
 DESIGN TEMP: 93°C/-29°C  
 C.A.: 0 mm  
 S/N: 21-4775  
 CRN: P5170.2/H5494.2  
 A475209  
 UNIT: LH040

**H-301  
HEATER**  
 MAKE: CATA-DYNE  
 MODEL: 8X6X24  
 SIZE: 152 mm x 610 mm (6" x 24")  
 S/N: 173740  
 BTU/HR: 6000  
 POWER: 12V/15A

**BMS-1000  
BURNER MANAGEMENT SYSTEM**  
 MAKE: PROFIRE 2100  
 POWER: 24VDC/115VAC TBC  
 CSA B149.3 COMPLIANT



PRELIMINARY  
NOT FOR  
CONSTRUCTION

REV	BY	DATE	DESCRIPTION	SPEC	DESIGN PRESSURE	TEST PRESSURE	INSULATE	X-RAY	HARDNESS	STRESS RELIEVE	25/02/26	NTS	△
A2	MH	25/03/03	ISSUED FOR REVIEW - DRAFTING ONLY										

ALBERTA PERMIT TO PRACTICE # P07166

PROJECT NUMBER LH40

DRAWN SCALE REVISION

FH NTS



Roska DBO Inc.  
www.roskadbo.com  
PH: (780) 532-8347

**ROSKA DBO INC.**  
**LINE HEATER**  
**LH40 LINE HEATER P & I D**  
**LH40-101**