

PUMP
UNIT: PUM039
PERFORMANCE

Maximum Operating Pressure*	275 psi (kPa)
-----------------------------	----------------

DRIVE

Model	Teco Westinghouse
Horsepower	75
RPM	3555
Volts	575
Amps	63.9
Hertz	60

PUMP

Model	Griswold M/6X4-10G
Flow Rate	See pump curve
Oulet	101.6 (mm) 4 inch
Inlet	152.4 (mm) 6 inch
Impellor	260.35 (mm) 10.25 inch
Net Positive Suction Head	See pump curve (m)

SHIPPING DIMENSIONS

Width	.53(m) 21 inches
Length	1.62 (m) 64 inches
Height	.73 (m) 29 inches
Weight Estimate	647 (kg) 1428 lbs

CERTIFICATION

Drive	Class 1, Div 2
Pump	CSA



811-ANSI Series Performance Data

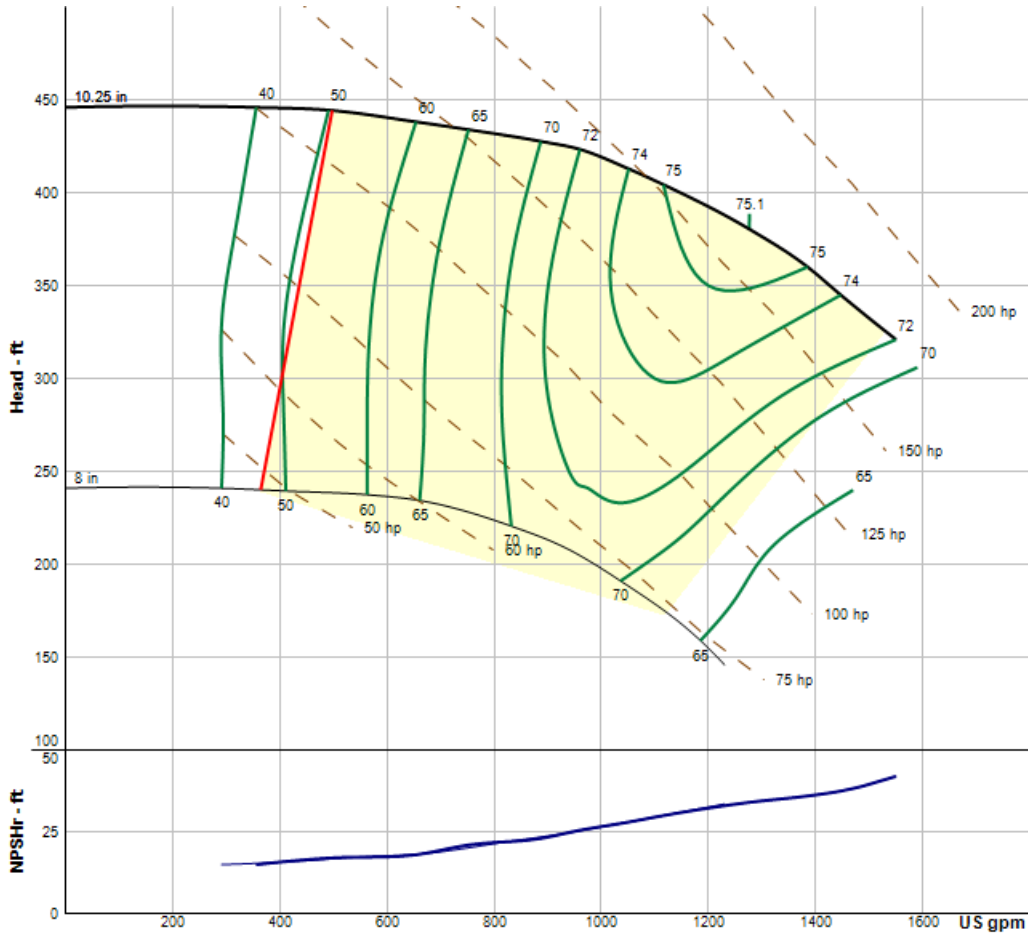


Model 6x4-10G A80

Project: Roska
Contact:
Company:
City:
Region: Alabama
Country: CANADA

Line Item Information
Date: 06/11/2024
Quote #
Tag: Pump Item
Quantity: 1

Submitted By: Jacques Mainville
Company:
City:
Region:
Phone:
eMail: jacques.mainville@csmppump.com



Pump Details	
Model	6x4-10G A80
Suction	6 in
Discharge	4 in
Speed	3600 RPM
Impeller Diameter	10.25 in
Ns	1475
Nss	8400
Curve	G-3615

Fluid	
Liquid	Water
Viscosity	1.00
Specific Gravity	1
Temperature	68 °F
Vapor Pressure	

Rated Point	
Flow	---
Head	---
Efficiency	---%
Power	--- HP
Speed	3560 RPM
NPSHr	--- feet

Design Curve	
Shutoff Head	446 feet
Min. Flow	498 gpm
BEP	---% at 1276 gpm
NOL Power	174 HP at 1550 gpm

Max Curve	
Max Power	174 HP at 1550 gpm

Motor	
Power	200 HP
Speed	3600 RPM
Frame	447TS
Type	NEMA
Enclosure	TEFC
Sizing Criteria	Max power on design curve

Pump Selection Warnings

Performance data and curves are based on test data, interpolations and accuracy of application input data. As a result, actual performance may vary.