

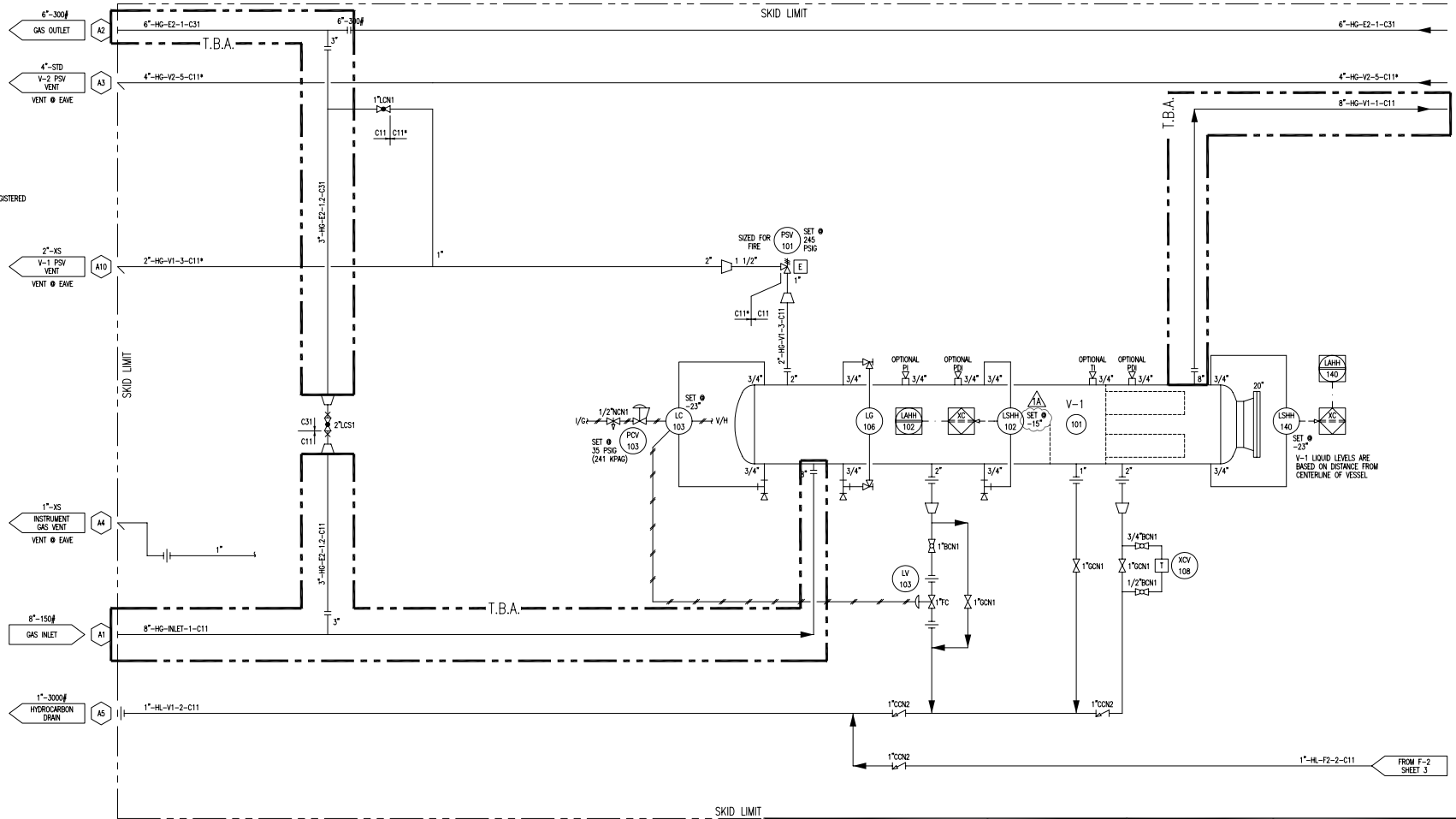
THE INFORMATION CONTAINED HEREIN IS THE CONFIDENTIAL PROPERTY OF TOROMONT ENERGY SYSTEMS AND IS NOT FOR PUBLICATION AND NO PART THEREOF SHALL BE COPIED OR COMMUNICATED TO A THIRD PARTY WITHOUT AUTHORIZATION FROM TOROMONT ENERGY SYSTEMS.

V-1
COMPRESSOR SUCTION SCRUBBER
 SIZE: 48" I.D. x 120" S/S
 M.A.W.P.: -15/245 PSIG @ 250 DEG. F
 M.S.M.T.: -20 DEG F @ 245 PSIG
 C.A.: 0.0625"
 ELEMENTS: (16) #PMG-36349
 WEIGHT: 5180 LBS

- SKID GENERAL NOTES:**
- ELECTRICAL CLASSIFICATION: CLASS 1, DIV. II, GROUP D (FIRE AND GAS DETECTION AS REQ'D BY OTHERS)
 - MINIMUM DESIGN INDOOR TEMPERATURE: 40 DEGF
 - FUEL GAS CONSUMPTION: 7253 BTU/HP/HR @ 100% LOAD
 - START GAS CONSUMPTION: 1391 SCFM @ 60 PSIG
806 SCFM @ 30 PSIG
 - ATMOSPHERIC PRESSURE: 13.4 PSIA
 - ELEVATION: 2500 FT. DESIGN
 - EXHAUST STACK 1.2 TIMES PEAK HEIGHT
 - C11* LINES BUILT TO C11 SPEC BUT NOT PRESSURE TESTED OR REGISTERED

- CUSTOMER INTERFACE**
- INPUTS FROM CUSTOMER:**
- CP-1 POWER SUPPLY
- OUTPUTS TO CUSTOMER:**
- RUN STATUS

- FLUID VOLUMES**
- * VOLUMES BASED ON DAY TANKS HALF FULL
- COMPRESSOR OIL: SS-100
 - VOLUME: 180 USG
 - ENGINE OIL: SAE 40
 - VOLUME: 216 USG (81 USG ENGINE)
 - EINE: 50/50 E.GLYCOL/WATER
 - VOLUME: 105 USG
 - TANK/CLOW: 50/50 E.GLYCOL/WATER
 - VOLUME: 137 USG
 - GEARBOX OIL: ISO 150
 - VOLUME: 15 USG
 - TOTAL WEIGHT OF FLUIDS: 5171 LBS



DESTROY PREVIOUS COPIES

NEXT AVAILABLE TAG NUMBER: 107

REV.	DESCRIPTION	DATE	BY	APPR.
1A	GENERAL REVISIONS	JUL 19/06	AF	
1	ISSUED FOR CONSTRUCTION	JUN 12/06	KW	GS

TOROMONT ENERGY SYSTEMS INC.
ISSUED FOR CONSTRUCTION
 JUL 19, 2006
 PER _____ AF

ENGINEER STAMP

TOROMONT ENERGY SYSTEMS

DRAWN BY: K. WALTON
 CHECKED BY: G. SCHUSTER
 APPR. BY: G. SCHUSTER

DATE: JUNE 12, 2006
 SCALE: N/A
 W.O. No.: 12158101

TITLE: P & I FLOW DIAGRAM

FOR: TOROMONT ENERGY SYSTEMS
 1005 HP BOOSTER COMPRESSOR

CUST. PO No.:
 Dwg. No.: 12158-101
 SHEET No.: 1 OF 4
 REV: 1A

THE INFORMATION CONTAINED HEREIN IS THE CONFIDENTIAL PROPERTY OF TOROMONT ENERGY SYSTEMS AND IS NOT FOR PUBLICATION AND NO PART THEREOF SHALL BE COPIED OR COMMUNICATED TO A THIRD PARTY WITHOUT AUTHORIZATION FROM TOROMONT ENERGY SYSTEMS.

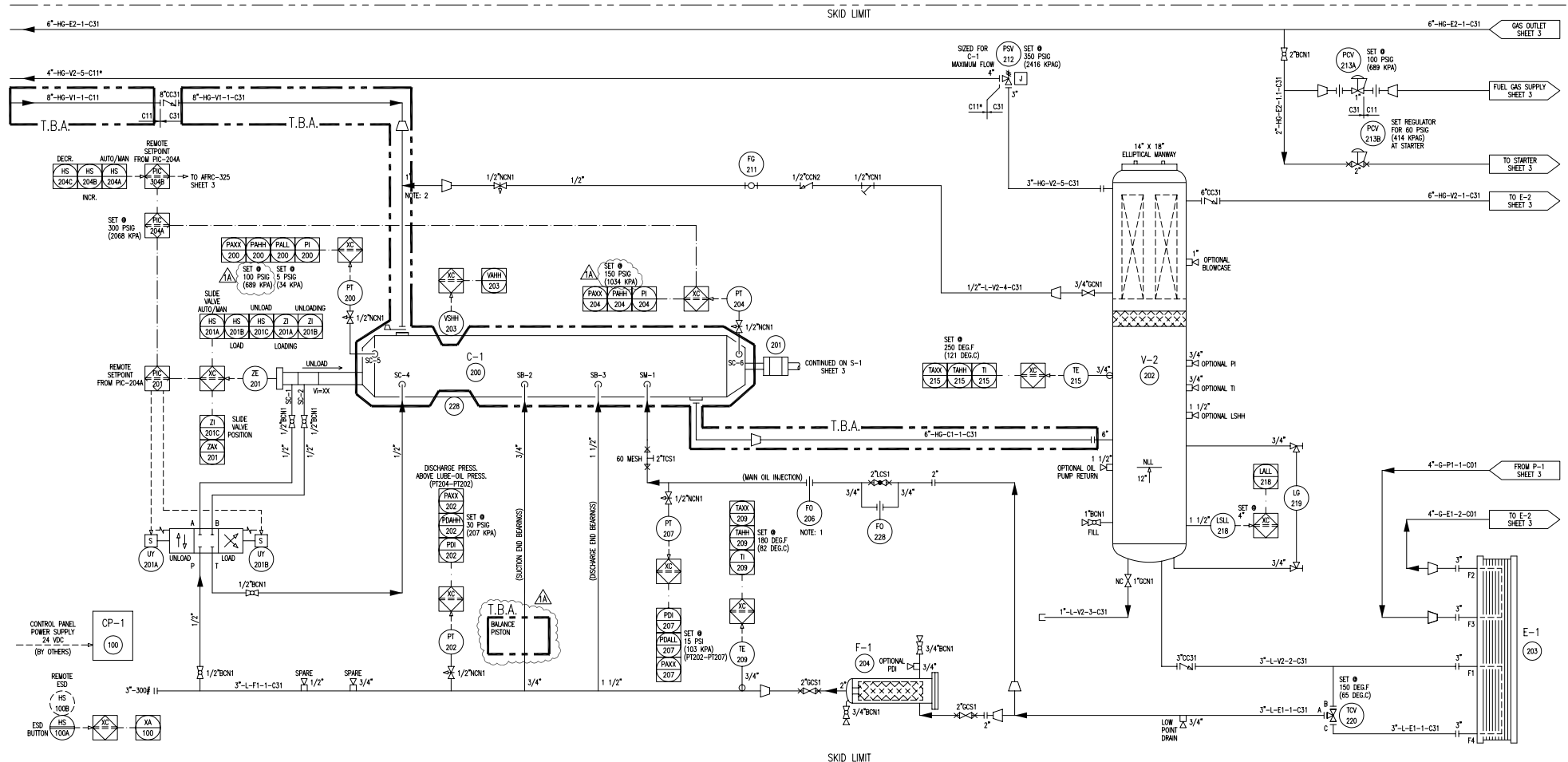
CP-1
CONTROL PANEL
MAKE: ALLEN BRADLEY
MODEL: COMPACT LOGX
POWER: 15 A, 24 VDC
CSA APPROVED CLASS DIV II, GROUP D

C-1
GAS COMPRESSOR
FRICK:
OPERATING SPEED: TBA RPM
SUCTION PRESSURE: SEE CURVES
DISCHARGE PRESSURE: SEE CURVES
OIL TEMPERATURE: 160 DEG F.
POWER DRAW: SEE CURVES
WEIGHT: XXX LBS

F-1
OIL FILTER
SIZE: 8 5/8" O.D. X 26" S/F
MAMP: 450 PSIG @ 250 DEG F
NOMT: -20 DEG F @ 450 PSIG
CA: 0.0025"
ELEMENT: MODEL 183C025 5 MICRON
WEIGHT: 304 LBS

V-2
OIL SEPARATOR
SIZE: 42" I.D. X 102" S/S
MAMP: 400 PSIG @ 250 DEG F
NOMT: -20 DEG F @ 400 PSIG
CA: 0.0025"
ELEMENT: (7) RSC1175-3
WEIGHT: 3580 LBS

E-1
OIL COOLER
MAKE: VEX INC
MODEL: VVN-46-SS-FS-1-100
PLATES: 79
MANV OIL SIDE: 400 PSIG @ 250 DEG F
MAMP GLYCOL SIDE: 400 PSIG @ 250 DEG F
WEIGHT: 2715 LBS



NOTE: 1 ORFICE SUPPLIED WITH COMPRESSOR
NOTE: 2 1" CONNECTION TO ALLOW BORE SCOPE INSPECTION OF INLET STRAINER

DESTROY PREVIOUS COPIES

REV.	DESCRIPTION	DATE	BY	APPR.
1A	GENERAL REVISIONS	JUL 19/06	AF	
1	ISSUED FOR CONSTRUCTION	JUN 12/06	KW	GS

TOROMONT ENERGY SYSTEMS INC.
ISSUED FOR CONSTRUCTION
 JUL 19, 2006
 PER _____ AF

ENGINEER STAMP

TOROMONT ENERGY SYSTEMS	
DRWN BY: K. WALTON	DATE: JUNE 12, 2006
CHKD BY: G. SCHUSTER	SCALE: N/A
APPR BY: G. SCHUSTER	W.D. No: 12158101
CUST. PO No:	

TITLE: P & I FLOW DIAGRAM
FOR: TOROMONT ENERGY SYSTEMS 1005 HP BOOSTER COMPRESSOR
DWG. No: 12158-101
SHEET No: 2 OF 4
REV. No: 1A

THE INFORMATION CONTAINED HEREIN IS THE CONFIDENTIAL PROPERTY OF TOROMONT ENERGY SYSTEMS AND IS NOT FOR PUBLICATION AND NO PART THEREOF SHALL BE COPIED OR COMMUNICATED TO A THIRD PARTY WITHOUT AUTHORIZATION FROM TOROMONT ENERGY SYSTEMS.

H-1A/B/C
CATALYTIC ROOM HEATER
 MAKE: CATA-DYNE
 HEAT OUTPUT: 32,000 BTU/HR (EACH)
 SIZE: 24" X 48"
 STARTING ELEMENT: 12V W/ 25' CABLES
 C/W PRESSURE REGULATOR
 THERMOSTAT & SAFETY SHUTOFF
 WEIGHT: 100 LBS

F-2
FUEL GAS SCRUBBER
 SIZE: 6 5/8" OD X 48" OAL
 WAMP: 245 PSIG @ 250 DEG F
 ELEMENT: FD-3128
 WEIGHT: 285 LBS

S-1
SPEED INCREASER
 MAKE: PACIFIC RM
 MODEL: EMPB 0808B-001
 RATIO: TBA
 INPUT: TBA
 OUTPUT: TBA
 SAE "D" BELT HOUSING
 WEIGHT: 300 LBS

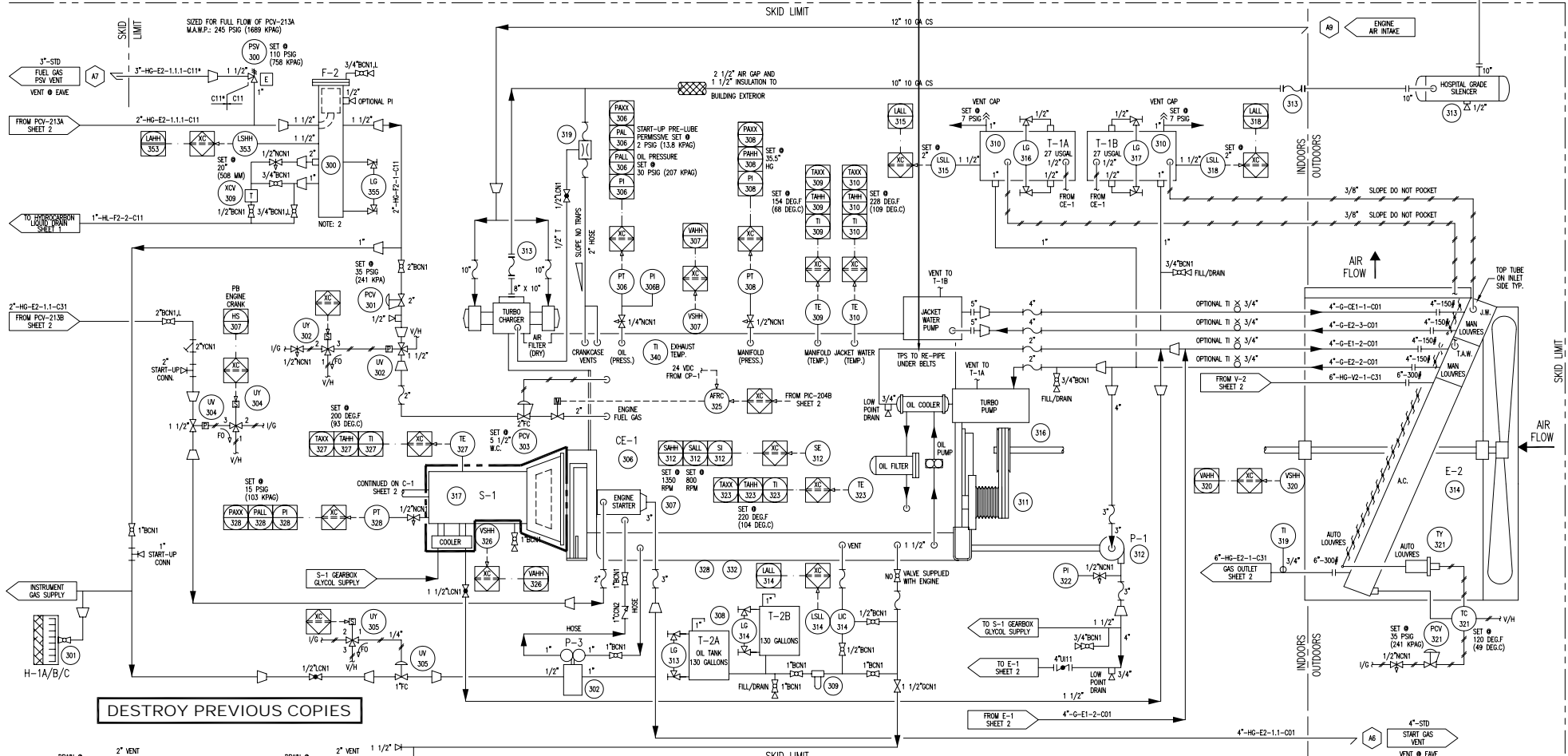
P-3
ENGINE PRE-LUBE PUMP
 MAKE: WARREN RUPP
 MODEL: G1FB1ARTNS300
 INLET GAS PRESSURE: 100 PSIG MAX.
 FLOW: 25 GPM @ 20 PSIG
 FLUID: SAE-40 LUBE OIL
 WEIGHT: 28 LBS

CE-1
NATURAL GAS ENGINE
 MAKE: CATERPILLAR 3512 TALE AFRC
 BORE: 6.7"
 STROKE: 7.5"
 DISPLACEMENT: 3158 CU. IN.
 COMPRESSION RATIO: 8 : 1
 BHP (RATED): 1005 HP @ 1400 RPM
 WEIGHT: 14750 LBS

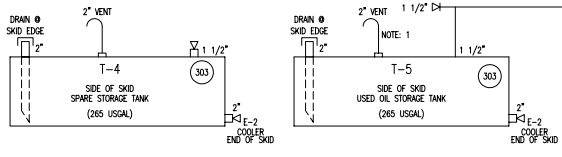
P-1
GLYCOL CIRCULATION PUMP
 MAKE: CATERPILLAR
 FLOW: 200 GPM @ 40 FTHD
 FLUID: 50/50 GLYCOL
 SUPPLIED WITH ENGINE

E-2
PROCESS GAS AFTERCOOLER/GLYCOL COOLER
 MAKE: AR-X-CHANGERS
 MODEL: 132EH-96-20
 WEIGHT: 16,700 LBS
 WAMP: 400 PSIG @ -20/300 DEG F
 DES. AMB: 95 DEG F
 TANK/CLOW: WAMP: 14 PSIG @ -20/300 DEG F
 DES. AMB: 95 DEG F
 FAN MAKE: MOORE
 MODEL: 10-BLADE, CL10K
 SPEED: 296 RPM
 FREQ: 18 DEGREES
 POWER: 53 HP

ENGINE EXHAUST
 1.2 TIMES PEAK HEIGHT



DESTROY PREVIOUS COPIES



NOTE 1
 VENT USED OIL TANK ABOVE ENGINE OIL N.L.L.

NOTE 2
 F-2 MOUNTS ON 20" STAND TO ACCOMMODATE AUTO LIQUID DRAIN

REV.	DESCRIPTION	DATE	BY	APPR.
1A	GENERAL REVISIONS	JUL 19/06	AF	
1	ISSUED FOR CONSTRUCTION	JUN 12/06	RW	GS

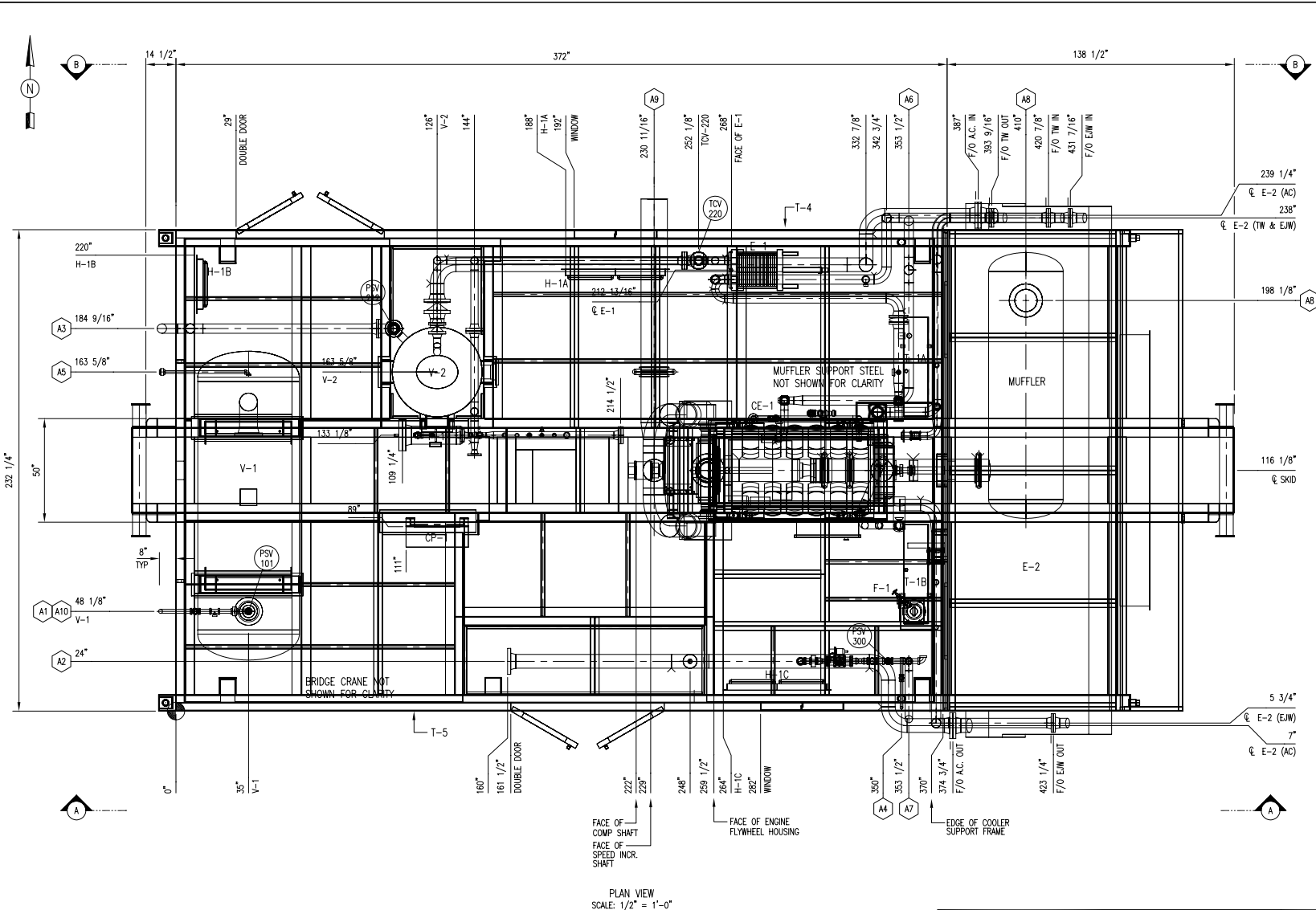
TOROMONT ENERGY SYSTEMS INC.
ISSUED FOR CONSTRUCTION
 JUL 19, 2006
 PER AF

ENGINEER STAMP
 TOROMONT ENERGY SYSTEMS
 K. WALTON
 G. SCHUSTER
 G. SCHUSTER

TOROMONT ENERGY SYSTEMS
 DATE: JUNE 12, 2006
 SCALE: N/A
 W.O. No: 12158101
 CUST. PO No:

TITLE: **P & I FLOW DIAGRAM**
 FOR: **TOROMONT ENERGY SYSTEMS 1005 HP BOOSTER COMPRESSOR**
 Dwg. No: **12158-101** SHEET No: **3 OF 4** REV: **1A**

THE INFORMATION CONTAINED HEREIN IS THE CONFIDENTIAL PROPERTY OF TOROMONT ENERGY SYSTEMS, AND IS NOT FOR PUBLICATION, AND NO PART THEREOF SHALL BE COPIED OR COMMUNICATED TO A THIRD PARTY WITHOUT AUTHORIZATION FROM TOROMONT ENERGY SYSTEMS.



NOZZLE SCHEDULE				
MARK	SERVICE	SIZE	RATING	TYPE
A1	GAS INLET	8"	150#	RFWN
A2	GAS OUTLET	6"	300#	RFWN
A3	V2 PSV VENT	4"	STD	PIPE
A4	INSTRUMENT GAS VENT	1"	XS	PIPE
A5	HYDROCARBON DRAIN	1"	3000#	NPT
A6	START GAS VENT	4"	STD	PIPE
A7	FUEL GAS PSV VENT	3"	STD	PIPE
A8	ENGINE EXHAUST	10"	10 GA	TUBE
A9	ENGINE AIR INTAKE	12"	10 GA	TUBE
A10	V1 PSV VENT	2"	XS	PIPE

- GENERAL NOTES:
- ALL TAIL DIMENSIONS FROM REFERENCE POINT.
 - SHIPPING LENGTH: 532" (44'-4")
SHIPPING WIDTH: 259" (21'-7")
SHIPPING HEIGHT: 240" (20'-0")
 - SHIPPING WEIGHT: 136,000 (W/FLUIDS)
 - OVERALL SKID DEPTH: 24"
 - NOZZLE ELEVATIONS ARE FROM CENTERLINE OF PIPE TO TOP OF BASE (REFERENCE POINT).
 - (*) DENOTES ELEVATION FROM FACE OF FLANGE TO TOP OF BASE (REFERENCE POINT).

REV.	DESCRIPTION	DATE	BY	APPR.
1	ISSUED FOR CONSTRUCTION	JUN 12/06	KW	GS

TOROMONT ENERGY SYSTEMS INC.
ISSUED FOR CONSTRUCTION
JUNE 12, 2006
PER K.W.

ENGINEER STAMP

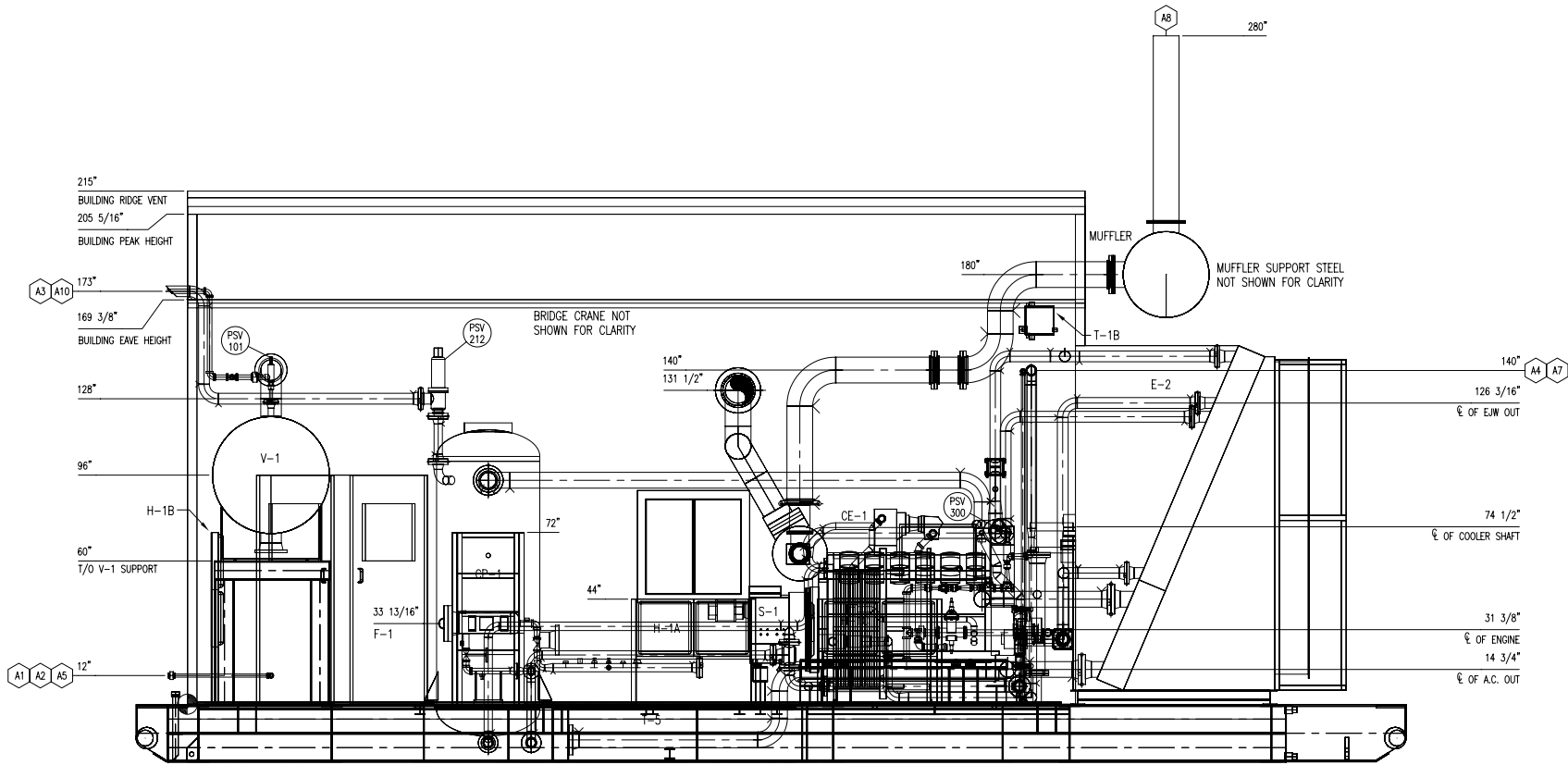
TOROMONT ENERGY SYSTEMS

DRAIN BY: K. WALTON
CHECK BY: G. SCHUSTER
APPR BY: G. SCHUSTER

DATE: JUN 12, 2006
SCALE: 1/2" = 1'-0"
W.O. No: 12158201

TITLE: GENERAL ARRANGEMENT PLAN VIEW
FOR: TOROMONT ENERGY SYSTEMS 1005 HP BOOSTER COMPRESSOR
CUST. PO No: 12158-201
DWG. No: 12158-201
SHEET No: 1 OF 4
REV: 1

THE INFORMATION CONTAINED HEREIN IS THE CONFIDENTIAL PROPERTY OF TOROMONT ENERGY SYSTEMS AND IS NOT FOR PUBLICATION AND NO PART THEREOF SHALL BE COPIED OR COMMUNICATED TO A THIRD PARTY WITHOUT AUTHORIZATION FROM TOROMONT ENERGY SYSTEMS.



ELEVATION 'A-A'

REV.	DESCRIPTION	DATE	BY	APPR.
1	ISSUED FOR CONSTRUCTION	JUN 12/06	KW	GS

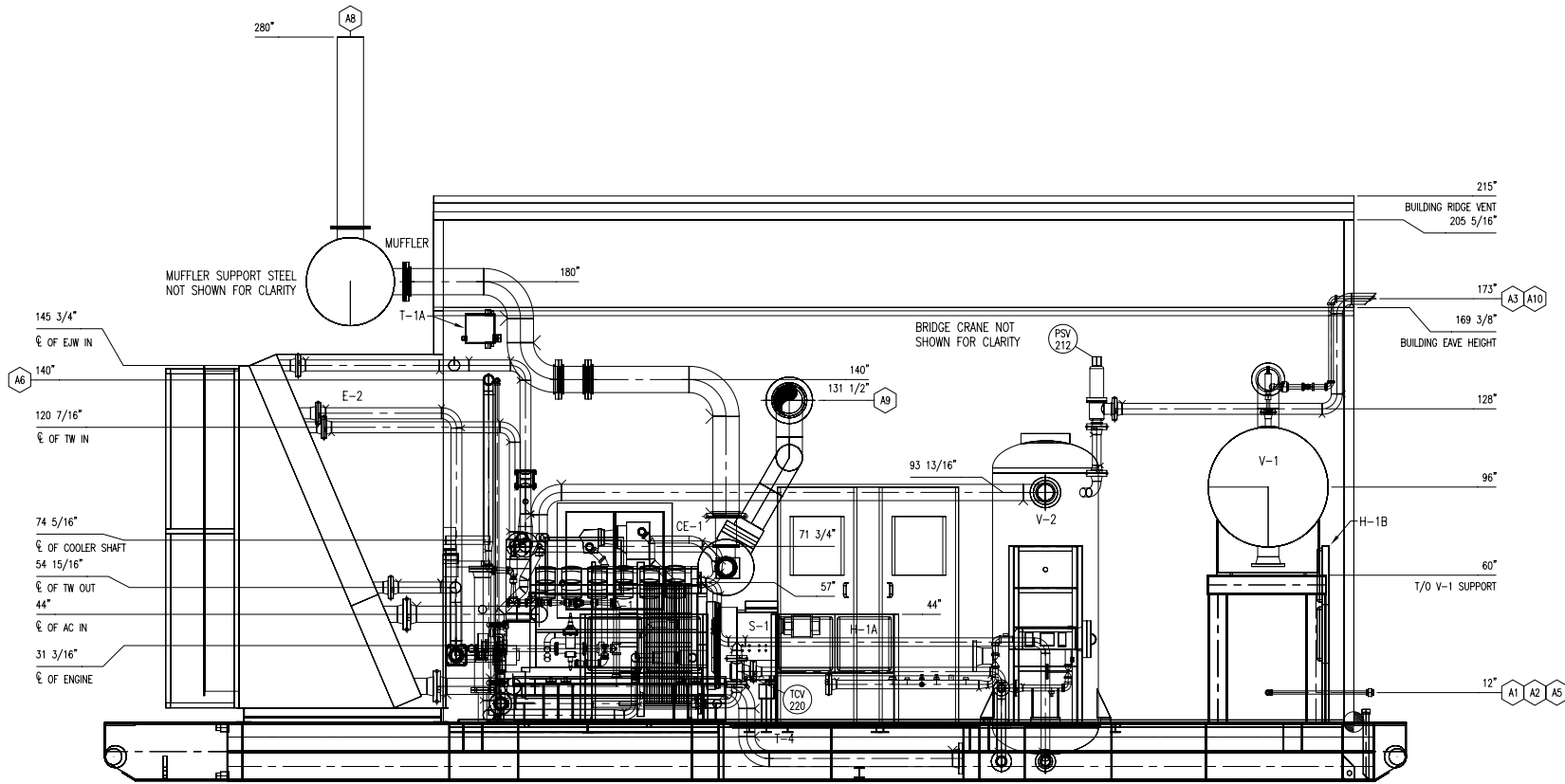
TOROMONT ENERGY SYSTEMS INC.
ISSUED FOR CONSTRUCTION
JUNE 12, 2006
 PER K.W.

ENGINEER STAMP

TOROMONT ENERGY SYSTEMS	
DRAWN BY: K. WALTON	DATE: JUNE 12, 2006
CHECKED BY: G. SCHUSTER	SCALE: 1/2"=1'-0"
APPROVED BY: G. SCHUSTER	W.O. No: 12158201
CUST. PO No:	

TITLE:	GENERAL ARRANGEMENT ELEVATION 'A-A'
FOR:	TOROMONT ENERGY SYSTEMS 1005 HP BOOSTER COMPRESSOR
DWG. No:	12158-201
SHEET No:	2 OF 4
REV:	1

THE INFORMATION CONTAINED HEREIN IS THE CONFIDENTIAL PROPERTY OF TOROMONT ENERGY SYSTEMS, AND IS NOT FOR PUBLICATION, AND NO PART THEREOF SHALL BE COPIED OR COMMUNICATED TO A THIRD PARTY WITHOUT AUTHORIZATION FROM TOROMONT ENERGY SYSTEMS.



ELEVATION 'B-B'

REV.	DESCRIPTION	DATE	BY	APPR.
1	ISSUED FOR CONSTRUCTION	JUN 12/06	KW	GS

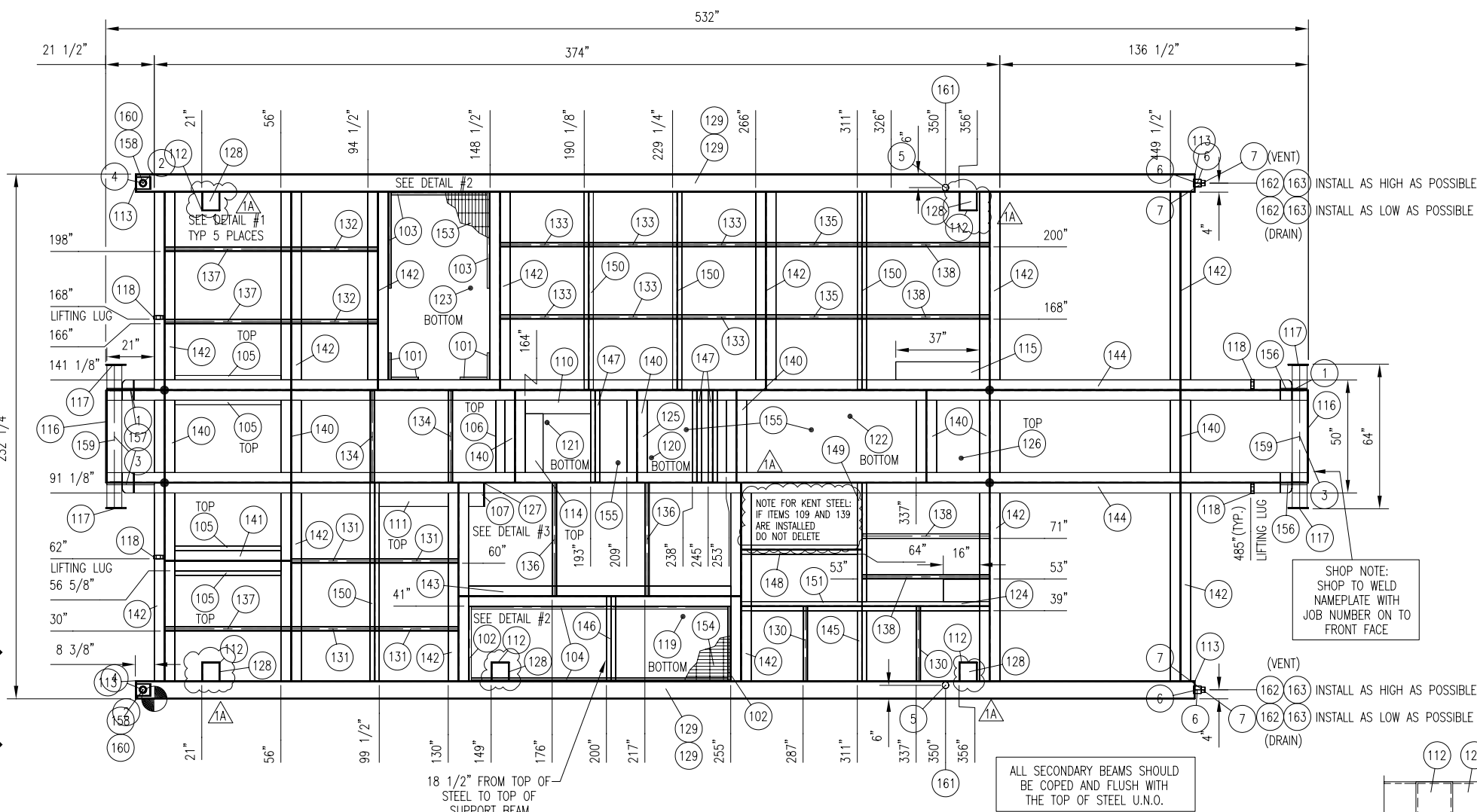
TOROMONT ENERGY SYSTEMS INC.
ISSUED FOR CONSTRUCTION
JUNE 12, 2006
 PER K.W.

ENGINEER STAMP

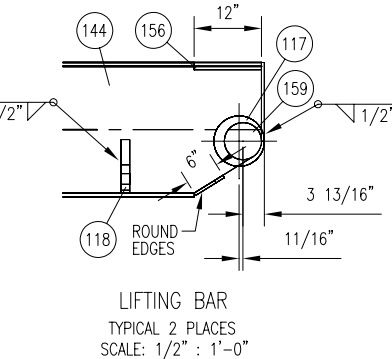
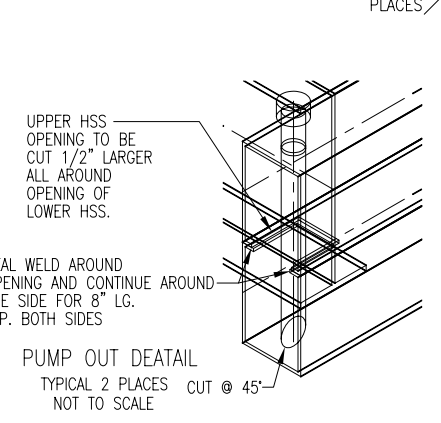
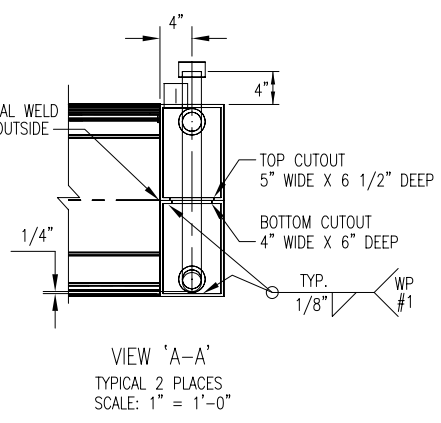
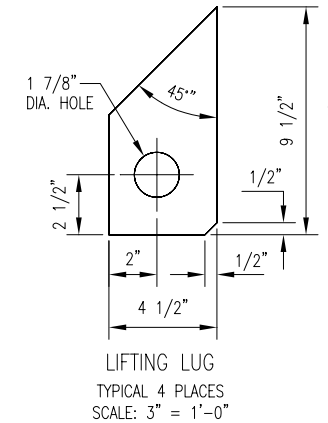
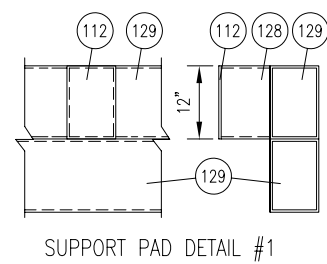
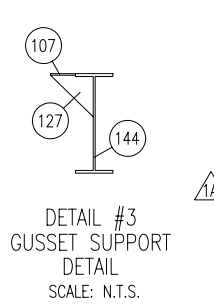
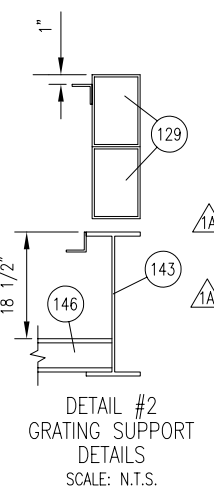
TOROMONT ENERGY SYSTEMS
 DRAIN BY: K. WALTON
 CHECK BY: G. SCHUSTER
 APPR BY: G. SCHUSTER
 DATE: JUNE 12, 2006
 SCALE: 1/2" = 1'-0"
 W.O. No: 12158201
 CUST. PO No:

TITLE: GENERAL ARRANGEMENT ELEVATION 'B-B'
 FOR: TOROMONT ENERGY SYSTEMS 1005 HP BOOSTER COMPRESSOR
 DWG. No: 12158-201
 SHEET No: 3 OF 4
 REV: 1

THE INFORMATION CONTAINED HEREIN IS THE CONFIDENTIAL PROPERTY OF TOROMONT ENERGY SYSTEMS AND IS NOT FOR PUBLICATION, AND NO PART THEREOF SHALL BE COPIED OR COMMUNICATED TO A THIRD PARTY WITHOUT AUTHORIZATION FROM TOROMONT ENERGY SYSTEMS.



PLAN VIEW



ALL SECONDARY BEAMS SHOULD BE COPED AND FLUSH WITH THE TOP OF STEEL U.N.O.

GENERAL NOTES:

- ALL TAIL DIMENSIONS FROM REFERENCE POINT.
- WEIGHT OF SKID STEEL BASE: 26500 LBS (MILL TOLERANCES & S.F. NOT APPLIED)
WEIGHT OF CONCRETE: 14370 LBS
TOTAL WEIGHT: 40870 LBS
- COPE FLANGES WHERE REQUIRED.
- ALL WELDS TO BE 1/4" FILLETS ALL AROUND, UNLESS OTHERWISE NOTED.
- ALL CUT LENGTHS ARE EXACT TOL +0.07/-0.125" (+0 MM/-3 MM)
- ALL BOLT HOLES ARE 3/4" (19 MM) UNLESS OTHERWISE NOTED.
- SURFACE PREP: SP2
PRIMER: ONE COAT OF PRI-1 RED OXIDE
PAINT: ONE COAT OF FIN-1
- FULL PENETRATION STRENGTH WELD IS REQ'D AT THESE LOCATIONS.

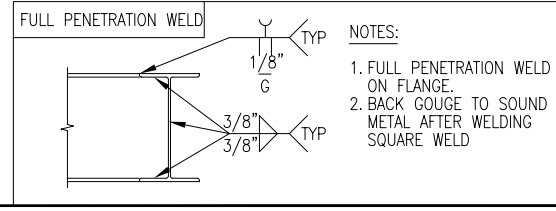
PIPING BILL OF MATERIAL

MARK	QTY	LONG ANNOTATION	MATERIAL	LENGTH	PART_NUMBER
101	4	ANGLE, 1-1/4" X 1-1/4", 1/4" THK	G40.2144W	12	005-HA-0125-0125-0025
102	2	ANGLE, 1-1/4" X 1-1/4", 1/4" THK	G40.2144W	33	005-HA-0125-0125-0025
103	3	ANGLE, 1-1/4" X 1-1/4", 1/4" THK	G40.2144W	42 1/2	005-HA-0125-0125-0025
104	2	ANGLE, 1-1/4" X 1-1/4", 1/4" THK	G40.2144W	113 1/2	005-HA-0125-0125-0025
105	4	FLAT BAR, 2" X 1/4" THK	G40.2144W	47	010-HA-0200-0025
106	1	FLAT BAR, 4" X 3/8" THK	G40.2144W	32	010-HA-0400-0037
107	1	FLAT BAR, 6" X 3/8" THK	G40.2144W	7	010-HA-0600-0037
108	-	-	-	-	-
109	-	-	-	-	-
110	1	FLAT BAR, 6" X 3/8" THK	G40.2144W	29	010-HA-0600-0037
111	1	FLAT BAR, 6" X 3/8" THK	G40.2144W	30 1/2	010-HA-0600-0037
112	5	FLAT BAR, 8" X 1/4" THK	G40.2144W	12	010-HA-0800-0025
113	4	FLAT BAR, 8" X 3/8" THK	G40.2144W	24	010-HA-0800-0037
114	1	FLAT BAR, 8" X 3/8" THK	G40.2144W	26	010-HA-0800-0037
115	1	FLAT BAR, 8" X 3/8" THK	G40.2144W	37	010-HA-0800-0037
116	2	PLATE, 1/2" X 41" X 14"	G40.2144W	41	040-HA-0050
117	4	PLATE, 1/2" X 9" DIA.	G40.2144W	9	040-HA-0050
118	4	PLATE, 1-1/2" X 9 1/2" X 4 1/2"	G40.2144W	9 1/2	040-HA-0150
119	1	PLATE, 3/16" X 116" X 33"	G40.2144W	116	040-HA-0018
120	1	PLATE, 3/16" X 35" X 32"	G40.2144W	35	040-HA-0018
121	1	PLATE, 3/16" X 45" X 32"	G40.2144W	45	040-HA-0018
122	1	PLATE, 3/16" X 75" X 32"	G40.2144W	75	040-HA-0018
123	1	PLATE, 3/16" X 83 1/8" X 45"	G40.2144W	83 1/8	040-HA-0018
124	1	PLATE, 3/8" X 16" X 9 15/16"	G40.2144W	16	040-HA-0037
125	1	PLATE, 3/8" X 32" X 11 15/16"	G40.2144W	32	040-HA-0037
126	1	PLATE, 3/8" X 32" X 19"	G40.2144W	32	040-HA-0037
127	1	PLATE, 3/8" X 12" X 12" (C.T.S.)	G40.2144W	12	040-HA-0037
128	5	TUBING, 12" X 8", 3/8" THK	G40.21350W	8	020-PQ-1200-0800-0037
129	4	TUBING, 12" X 8", 3/8" THK	G40.21350W	468	020-PQ-1200-0800-0037
130	2	TUBING, 2" X 2", 1/4" THK	G40.21350W	32 7/8	020-PQ-0200-0200-0025
131	4	TUBING, 2" X 2", 1/4" THK	G40.21350W	36 5/8	020-PQ-0200-0200-0025
132	2	TUBING, 2" X 2", 1/4" THK	G40.21350W	38 1/16	020-PQ-0200-0200-0025
133	6	TUBING, 2" X 2", 1/4" THK	G40.21350W	38 13/16	020-PQ-0200-0200-0025
134	2	TUBING, 2" X 2", 1/4" THK	G40.21350W	40 9/16	020-PQ-0200-0200-0025
135	2	TUBING, 2" X 2", 1/4" THK	G40.21350W	42 3/16	020-PQ-0200-0200-0025
136	2	TUBING, 2" X 2", 1/4" THK	G40.21350W	49 11/16	020-PQ-0200-0200-0025
137	3	TUBING, 2" X 2", 1/4" THK	G40.21350W	55 9/16	020-PQ-0200-0200-0025
138	4	TUBING, 2" X 2", 1/4" THK	G40.21350W	56 1/8	020-PQ-0200-0200-0025
139	-	-	-	-	-
140	7	WIDE FLANGE, 24" X 76#	G40.2150W	40 9/16	034-HA-2400-0760
141	1	WIDE FLANGE, 24" X 76#	G40.2150W	55 9/16	034-HA-2400-0760
142	13	WIDE FLANGE, 24" X 76#	G40.2150W	87 3/8	034-HA-2400-0760
143	1	WIDE FLANGE, 24" X 76#	G40.2150W	124 9/16	034-HA-2400-0760
144	2	WIDE FLANGE, 24" X 76#	G40.2150W	531	034-HA-2400-0760
145	1	WIDE FLANGE, 4" X 13#	G40.2150W	32 7/8	034-HA-0400-0130
146	1	WIDE FLANGE, 4" X 13#	G40.2150W	37 1/4	034-HA-0400-0130
147	3	WIDE FLANGE, 4" X 13#	G40.2150W	40 9/16	034-HA-0400-0130
148	1	WIDE FLANGE, 4" X 13#	G40.2150W	53 3/16	034-HA-0400-0130
149	1	WIDE FLANGE, 4" X 13#	G40.2150W	54 1/4	034-HA-0400-0130
150	4	WIDE FLANGE, 4" X 13#	G40.2150W	87 3/8	034-HA-0400-0130
151	1	WIDE FLANGE, 4" X 13#	G40.2150W	109 9/16	034-HA-0400-0130
152	-	-	-	-	-
153	SHOP	GRATING, 1 X 3/16" (19-4) X 14.0FT2 (C.T.S.)	SA-36	-	-
154	SHOP	GRATING, 1 X 3/16" (19-4) X 26.3FT2 (C.T.S.)	SA-36	-	-
155	SHOP	CONCRETE: 100 FT3	-	-	-

PIPING BILL OF MATERIAL

MARK	QTY	DESCRIPTION	SIZE	LENGTH	DB_CODE
156	1	PIPE, XS WT, SMLS SA-106-B	1"	12	17-0100HSCA
157	1	PIPE, XS WT, SMLS SA-106-B	1"	21	17-0100HSCA
158	2	PIPE, STD WT, SMLS SA-106-B	2"	27 1/2	17-0200ESCA
159	2	PIPE, STD WT, SMLS SA-106-B	6"	63	17-0600ESCA
160	2	CAP, THD, 3000#, SA-105	2"	-	PTN-069.0008
161	2	COUPLING, THD, 3000#, SA-105	1 1/2"	-	PTN-070.0007
162	4	COUPLING, THD, 3000#, SA-105	2"	-	PTN-070.0008
163	4	HEX HEAD PLUG, THD, 3000#, SA-105	2"	-	PTN-073.0008

VENDOR SUPPLIED ISSUED TO KENT STEEL DESTROY PREVIOUS COPIES



REV.	DESCRIPTION	DATE	BY	APPR.
1A	ITEMS 108, 109, 139, AND 152 DELETED 112 & 128 RELOCATED	MAY 23/06	KW	
1	ISSUED FOR CONSTRUCTION	MAY 12/06	KW	GS

TOROMONT ENERGY SYSTEMS INC.
ISSUED FOR CONSTRUCTION
MAY 23, 2006
PER K.W.

ENGINEER STAMP

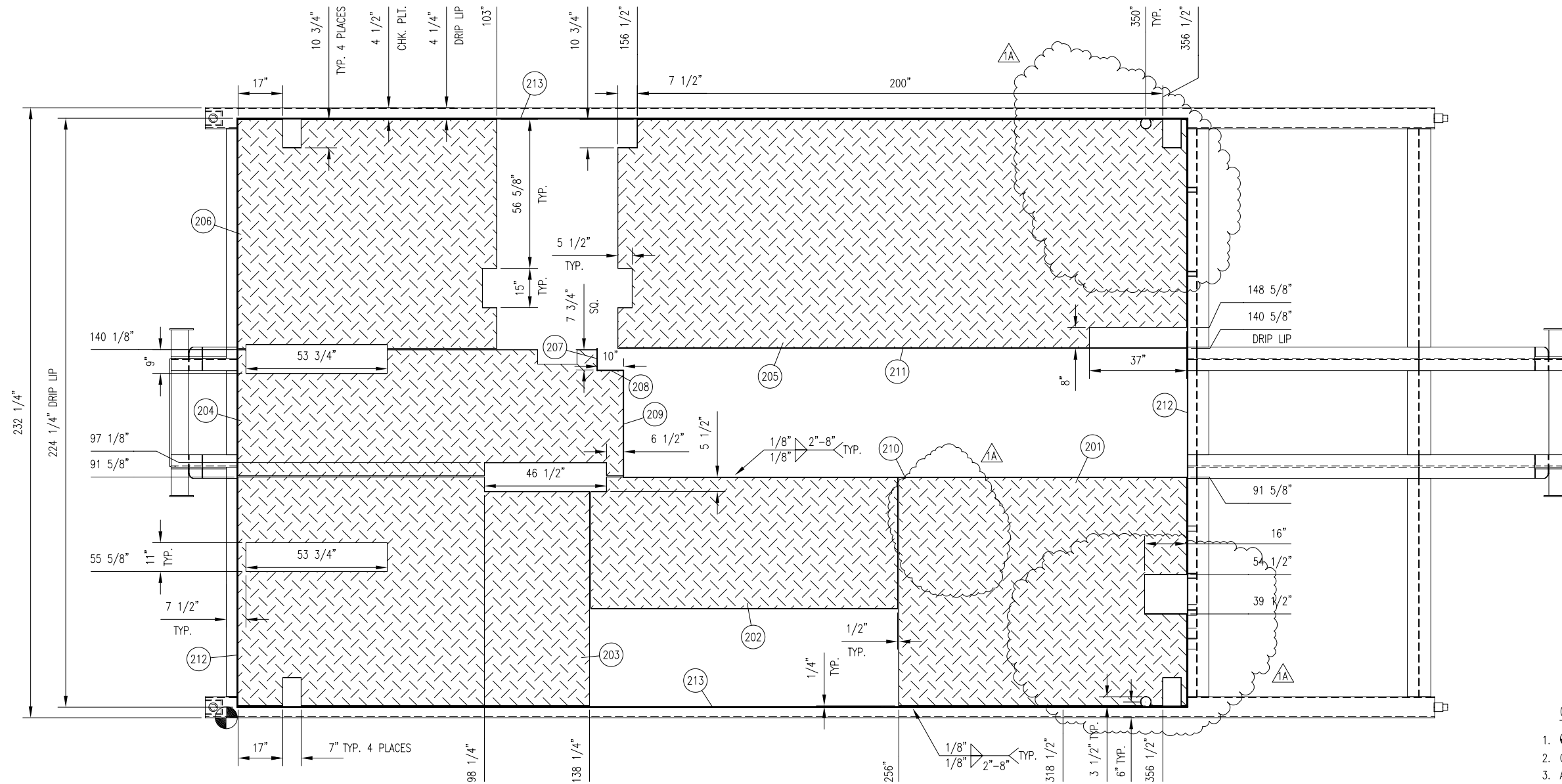
TOROMONT ENERGY SYSTEMS

DRAWN BY: K. WALTON
DATE: MAY 08, 2006
CHKD. BY: G. SCHUSTER
SCALE: 3/8" = 1'-0"
APPR. BY: G. SCHUSTER
W.O. No: 12158301

TITLE: STRUCTURAL STEEL LAYOUT & DETAILS
FOR: TOROMONT ENERGY SYSTEMS 1005 HP BOOSTER COMPRESSOR
DWG. No: 12158-301
SHEET No: 1 OF 9
REV: 1A

THE INFORMATION CONTAINED HEREIN IS THE CONFIDENTIAL PROPERTY OF TOROMONT ENERGY SYSTEMS AND IS NOT FOR PUBLICATION, AND NO PART THEREOF SHALL BE COPIED OR COMMUNICATED TO A THIRD PARTY WITHOUT AUTHORIZATION FROM TOROMONT ENERGY SYSTEMS.

BILL OF MATERIAL					
MARK	QTY	LONG ANNOTATION	MATERIAL	LENGTH	PART_NUMBER
201	1	CHECKER PLATE, 3/16" X 109 1/2" X 87 1/8"	SA-36	109 1/2	042-HA-0018
202	1	CHECKER PLATE, 3/16" X 116 3/4" X 50 1/8"	SA-36	116 3/4	042-HA-0018
203	1	CHECKER PLATE, 3/16" X 133 3/4" X 87 1/8"	SA-36	133 3/4	042-HA-0018
204	1	CHECKER PLATE, 3/16" X 146 3/4" X 48"	SA-36	146 3/4	042-HA-0018
205	1	CHECKER PLATE, 3/16" X 216 1/2" X 87 1/8"	SA-36	216 1/2	042-HA-0018
206	1	CHECKER PLATE, 3/16" X 98 1/2" X 87 1/8"	SA-36	98 1/2	042-HA-0018
207	1	FLAT BAR, 1" X 1/4" THK	G40.2144W	8 1/2	010-HA-0100-0025
208	1	FLAT BAR, 1" X 1/4" THK	G40.2144W	10	010-HA-0100-0025
209	1	FLAT BAR, 1" X 1/4" THK	G40.2144W	40 3/4	010-HA-0100-0025
210	1	FLAT BAR, 1" X 1/4" THK	G40.2144W	214 1/4	010-HA-0100-0025
211	1	FLAT BAR, 1" X 1/4" THK	G40.2144W	216 1/4	010-HA-0100-0025
212	2	FLAT BAR, 1" X 1/4" THK	G40.2144W	223 3/4	010-HA-0100-0025
213	2	FLAT BAR, 1" X 1/4" THK	G40.2144W	362	010-HA-0100-0025



CHECKER PLATE AND DRIP LIP DETAIL

- GENERAL NOTES:
- ALL TAIL DIMENSIONS FROM REFERENCE POINT.
 - COPE FLANGES WHERE REQUIRED.
 - ALL WELDS TO BE 1/4" FILLETS ALL AROUND, UNLESS OTHERWISE NOTED.
 - ALL CUT LENGTHS ARE EXACT TOL +0.0"/-0.125" (+0 MM/-3 MM)
 - ALL BOLT HOLES ARE 3/4"Ø(19 MMØ) UNLESS OTHERWISE NOTED.
 - SURFACE PREP: SP2
ONE COAT OF PRI-1 RED OXIDE
ONE COAT OF FIN-1
 - WEIGHT OF CHECKER PLATE: 3630 LBS.

VENDOR SUPPLIED ISSUED TO KENT STEEL

DESTROY PREVIOUS COPIES

REV.	DESCRIPTION	DATE	BY	APPR.
1A	CHECKER PLATE REVISED	MAY 23/06	KW	
1	ISSUED FOR CONSTRUCTION	MAY 12/06	KW	GS

TOROMONT ENERGY SYSTEMS INC.
ISSUED FOR CONSTRUCTION
 MAY 23, 2006
 PER K.W.

ENGINEER STAMP

TOROMONT ENERGY SYSTEMS

DRAWN BY: K. WALTON
 CHKD. BY: G. SCHUSTER
 APPR. BY: G. SCHUSTER

DATE: MAY 08, 2006
 SCALE: 5/8" = 1'-0"
 W.O. No: 12158301

TITLE: STRUCTURAL STEEL
 CHECKERPLATE AND DRIP LIP DETAIL

FOR: TOROMONT ENERGY SYSTEMS
 1005 HP BOOSTER COMPRESSOR

DWG. No: 12158-301
 SHEET No: 2 OF 9
 REV: 1A