

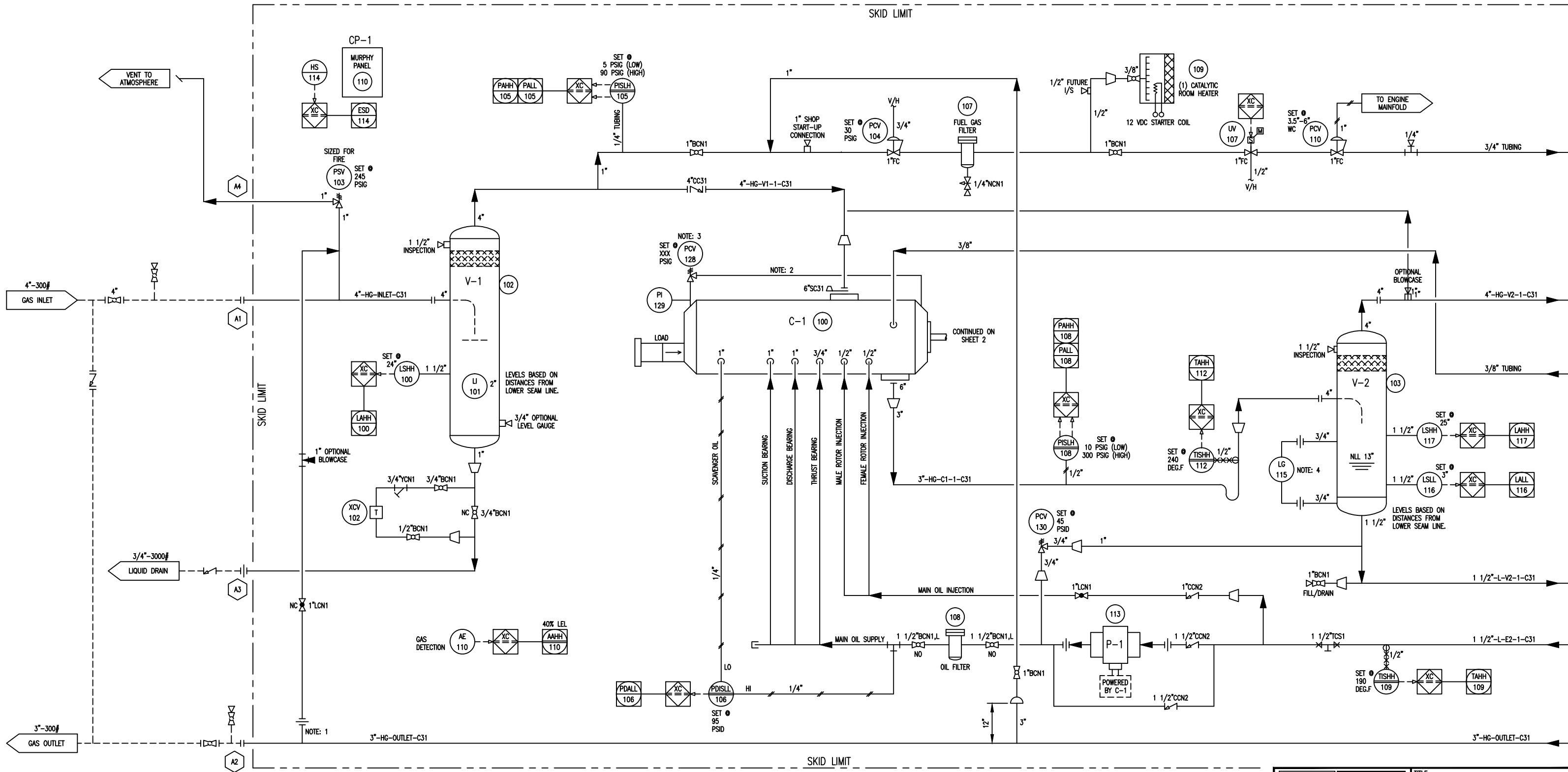
CP-1  
CONTROL PANEL  
TYPE: MURPHYMATIC  
POWER SUPPLY: IGNITION SYSTEM

V-1  
SUCTION SCRUBBER  
SIZE: 18" O.D. X 60" S/S  
M.A.W.P.: 400 PSIG @ 250 DEG.F  
M.D.M.T.: -20 DEG.F @ 400 PSIG  
C.A.: 0.0625"  
WEIGHT: 750 LBS.

C-1  
GAS COMPRESSOR  
ARIEL: MODEL AR-208N  
OPERATING SPEED: 900 TO 1800 RPM  
SUCTION PRESSURE: 5-90 PSIG  
DISCHARGE PRESSURE: 10-300 PSIG  
MAX. DISCHARGE PRESSURE: 362 PSIG  
MAX. DISCHARGE TEMPERATURE: 248 DEG.F  
FLOW: SEE CURVES  
WEIGHT: 1813 LBS.

P-1  
COMPRESSOR OIL PUMP  
MAKE: COMMERCIAL INTERTECH  
MODEL: P50-2.5  
FLOW: 47 USGPM  
WEIGHT: 50 LBS.

V-2  
PRIMARY OIL SEPARATOR  
SIZE: 18" O.D. X 60" S/S  
M.A.W.P.: 400 PSIG @ 250 DEG.F  
M.D.M.T.: -20 DEG.F @ 400 PSIG  
C.A.: 0.0625"  
WEIGHT: 750 LBS.



SKID GENERAL NOTES:

- ELECTRICAL CLASSIFICATION: CLASS 1, DIV. 2, GROUP D
- FIRE AND GAS DETECTION: BY CUSTOMER AS REQUIRED.
- MINIMUM DESIGN AMBIENT TEMPERATURE: 50 DEG.F
- MAXIMUM DESIGN AMBIENT TEMPERATURE: 90 DEG.F
- SITE ELEVATION: 2500 FT.
- ATMOSPHERIC PRESSURE: 13.4 PSIA
- COMPRESSOR OIL TYPE: S5-150 (34 USGAL)
- ENGINE OIL TYPE: ESSO G30, OR EQUAL (17 USGAL)
- ENGINE GLYCOL CHARGE: 50 / 50 EGLY (26 USGAL)

- NOTE: 1 TAKE CONNECTION FROM THE TOP PIPE.
- NOTE: 2 GAS BALANCE LINE SUPPLIED WITH COMPRESSOR
- NOTE: 3 CONSULT MANUAL FOR PCV-128 SET PRESSURE.
- NOTE: 4 CENTER OF GAUGE TO BE 13" FROM LOWER SEAM

REV.	DESCRIPTION	DATE	BY	APPR.
2	AS BUILT	FEB 13/07	MB	AD
1	ISSUED FOR CONSTRUCTION	JUL 24/03	AVK	AD

PERMIT TO PRACTICE STAMP	ENGINEER STAMP
--------------------------	----------------

DATE: JULY 23, 2003	SCALE: N/A
W.O. No: 11283101	

**TOROMONT** TOROMONT PROCESS SYSTEMS

DRAWN BY: A. KIRICHKOV  
CHKD. BY: A. DURHAM  
APPR. BY: G. SCHUSTER  
CUST. PO No:

DATE: JULY 23, 2003  
SCALE: N/A  
W.O. No: 11283101

TITLE: P & I FLOW DIAGRAM  
FOR: GREY WOLF EXPLORATION 135 HP WELLHEAD BOOSTER UNIT (ARIEL AR-208 N COMPRESSOR)

DWG. No: 11283-101  
SHEET No: 1 OF 3  
REV:

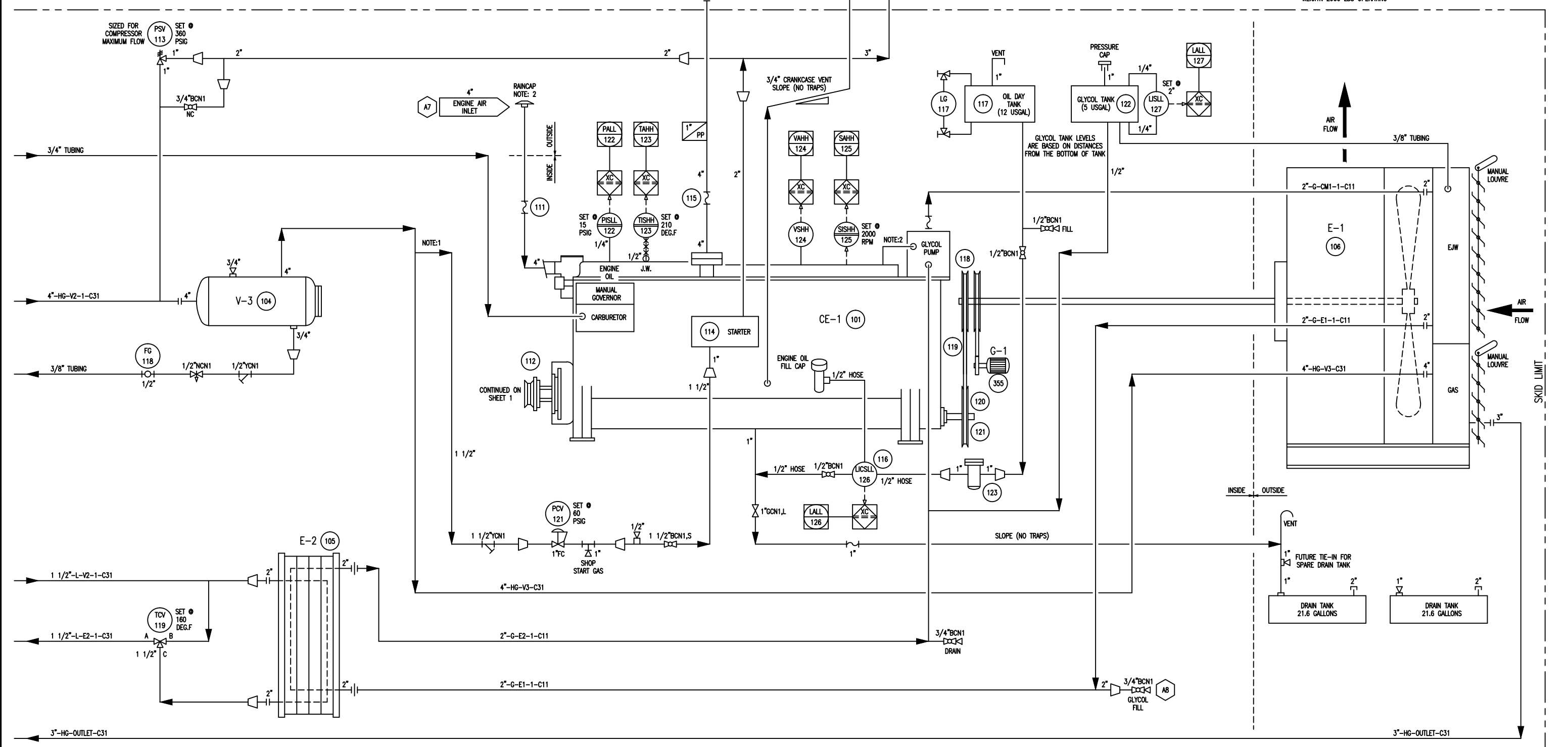
**V-3**  
**SECONDARY OIL SEPARATOR**  
 CHIL-COM: MODEL COSM-205-T  
 SIZE: 18" O.D. X 40" S/S  
 M.A.W.P.: 400 PSIG @ 400 DEG.F  
 M.D.M.T.: -20 DEG.F @ 400 PSIG  
 C.A.: 0.0625"  
 ELEMENT: (1) RSC1140-03  
 WEIGHT: 450 LBS.

**E-2**  
**OIL COOLER**  
 MODEL: VICARB V20-SST-75  
 PLATES: 59  
 M.A.W.P. OIL SIDE: 375 PSIG @ 250 DEG.F  
 M.A.W.P. GLYCOL SIDE: 375 PSIG @ 250 DEG.F  
 DESIGN DUTY: 236670 BTU/HR  
 SURFACE AREA: 118.3 FT<sup>2</sup>  
 WEIGHT: 910 LBS. OPERATING

**CE-1**  
**COMPRESSOR ENGINE**  
 CATERPILLAR MODEL 3306NA  
 138 HP @ 1800 RPM  
 NO. OF CYLINDERS: 6  
 BORE & STROKE: 4.75" & 6.00"  
 DISPLACEMENT: 638 CUBIC INCHES  
 CARBURATION: NATURALLY ASPIRATED  
 SPEED: 900 TO 1800 RPM  
 WEIGHT: 2000 LBS.

**G-1**  
**GENERATOR**  
 MAKE: MPI HOLLEY  
 MODEL: HOLLEY  
 OUTPUT: 60 AMPS  
 VOLTAGE: 24 VDC

**E-1**  
**GLYCOL COOLER/AFTERCOOLER**  
 TYPE: AIR-X-HEMPHILL  
 MODEL: 48EF  
 GLYCOL COIL: 14 PSIG @ 300 DEG.F  
 AFTERCOOLER COIL: 400 PSIG @ 300 DEG.F  
 M.D.M.T.: -20 DEG.F @ 400 PSIG  
 FAN: 6 BLADES 48" DIA.  
 FAN SPEED: 763 RPM  
 FAN HP: 8.1 HP  
 TOTAL AIR FLOW: 22597 SCFM  
 WEIGHT: 2900 LBS OPERATING



NOTE: 1 START GAS CONNECTION FROM TOP OF PIPE  
 NOTE: 2 SUPPLIED WITH ENGINE

REV.	DESCRIPTION	DATE	BY	APPR.
2	AS BUILT	FEB 13/07	MR	AD
1	ISSUED FOR CONSTRUCTION	JUL 24/03	AVK	AD

PERMIT TO PRACTICE STAMP  
 ENGINEER STAMP

**TOROMONT**  
 TOROMONT PROCESS SYSTEMS  
 DRAWN BY: A. KIRICHKOV  
 CHKD. BY: A. DURHAM  
 APPR. BY: G. SCHUSTER  
 CUST. PO No:

DATE: JULY 23, 2003  
 SCALE: N/A  
 W.O. No: 11283101

TITLE: P & I FLOW DIAGRAM  
 FOR: GREY WOLF EXPLORATION  
 135 HP WELLHEAD  
 BOOSTER UNIT  
 (ARIEL AR 208 N COMPRESSOR)  
 DWG. No: 11283-101  
 SHEET No: 2 OF 3  
 REV: 2

THE INFORMATION CONTAINED HEREIN IS THE CONFIDENTIAL PROPERTY OF TOROMONT PROCESS SYSTEMS AND IS NOT FOR PUBLICATION, AND NO PART THEREOF SHALL BE COPIED OR COMMUNICATED TO A THIRD PARTY WITHOUT AUTHORIZATION FROM TOROMONT PROCESS SYSTEMS.

