

**GAS COMPRESSOR**

**UNIT: CB46**

**PERFORMANCE**

Base Horsepower	95HP
Packager	Toromont
Year Built	2007
Suction Pressure (typical range) *	0-90 PSI
Discharge Pressure (maximum) *	375 PSI
Flow Rate (typical range) *	
Gas Source	Sour
<i>*Performance is subject to confirmation on site specific process conditions</i>	

**MAJOR EQUIPMENT**

Gas Compressor	
Trailer Mounted	

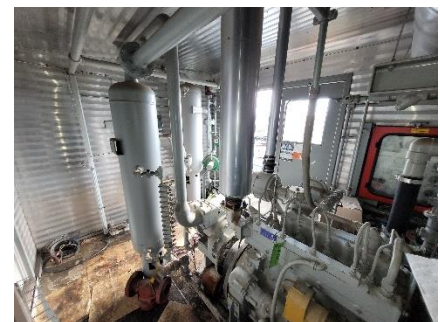
**DRIVER**

Style	Caterpillar 3304 NA
Rating	95 HP
Output (RPM)	1800
Serial #	NAF01387



**COMPRESSOR**

Make	Frick
Model	XJF 151A
Throws	
Stages	
Stroke	
Rated RPM	3600
Distance Pieces	NA
Serial #	0686AZ



**COOLER**

Make	Air-X-Hemphill
Model	42VIS
Louvres	
Fan Drive (electric/jackshaft)	

**SCRUBBERS**

	Size	CRN	Serial Number	MAWP	Temp	RT	HT
Oil Separator	12.75 x 48"	R5636.231	C250120A-5	400 PSI	250 F		
Inlet Separator	16 x 48"	L9758.213	C250120B-5	400 PSI	100 F		

**PULSATION**

	Manuf.	CRN	Serial Number	MAWP	Temp	RT HT
N/A						

**PSV's**

	Set Pressure	Size
Stage 1 Suction	278 PSI	1 x 1
Stage 1 Disch.	400 PSI	1 x 2

**CONTROL PANEL**

Make	Murphymatic TTDJR
Model	
HMI / PLC	

**END DEVICES**

	Quantity
LEL Detection	
H2S Detection	
Fire Detection	

**SKID CONNECTIONS**

Suction Inlet Flange	2"
Discharge Flange	
Flare	2" 150#
Drain	

**DRAIN TANK**

Capacity	In Skid
----------	---------

**SHIPPING DIMENSIONS**

Width	10' 6"
Length	18'
Height	10'10"
Weight Estimate (dry)	18,600 LBS

**CERTIFICATION**

Vessel	
Piping	
Province(s) of Registration	
Area Classification	
Service	Sour