

GAS COMPRESSOR

UNIT: CB44

PERFORMANCE

Base Horsepower	95HP
Packager	Jiro
Year Built	2006
Suction Pressure (typical range) *	0-50 PSI
Discharge Pressure (maximum) *	50-200 PSI
Flow Rate (typical range) *	0.5 – 0.9 MMSCFD
Gas Source	Sour
<i>*Performance is subject to confirmation on site specific process conditions</i>	

MAJOR EQUIPMENT

Gas Compressor	
Trailer Mounted	

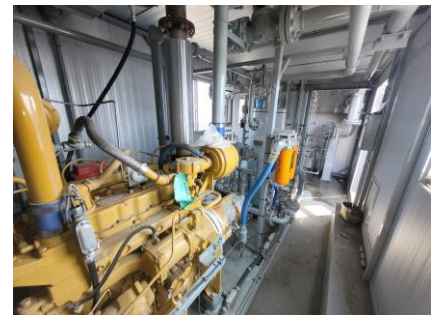
DRIVER

Style	Caterpillar 3304 NA
Rating	95 HP
Output (RPM)	1800
Serial #	N4FG2167



COMPRESSOR

Make	Gardner Denver
Model	SSHG99D
Throws	
Stages	
Stroke	
Rated RPM	745 RPM
Distance Pieces	
Serial #	S297892



COOLER

Make	Global Heat Transfer
Model	GHTJ – 1600 (370 PSI, 250F)
Louvres	
Fan Drive (electric/jackshaft)	

SCRUBBERS

	Size	CRN	Serial Number	MAWP	Temp	RT	HT
Oil Separator	20" x 50"	R6697.213	9893	350 PSI	250 F		
Inlet Separator	24" x 72"	R8091.213	10169	285 PSI	100 F		

PULSATION

	Manuf.	CRN	Serial Number	MAWP	Temp	RT HT
N/A						

PSV's

	Set Pressure	Size
Stage 1 Suction	100 PSI	1 x 1
Stage 1 Disch.	300 PSI	1 x 1

CONTROL PANEL

Make	Ahronic
Model	
HMI / PLC	

END DEVICES

	Quantity
LEL Detection	
H2S Detection	
Fire Detection	

SKID CONNECTIONS

Suction Inlet Flange	
Discharge Flange	
Flare	
Drain	

DRAIN TANK

Capacity	In Skid
----------	---------

SHIPPING DIMENSIONS

Width	8'6"
Length	26' 5"
Height	12' 8"
Weight Estimate (dry)	25,000 LBS

CERTIFICATION

Vessel	
Piping	
Province(s) of Registration	
Area Classification	
Service	Sour

3500 Series 95 hp JIRO Enerflex

SSH (3.0Vi) - Gardner Denver Gas Screw Compressor Flow Table At 1800 RPM

DISCHARGE PRESSURE (psig)

Pressure (psig)	DISCHARGE PRESSURE (psig)														
	50	60	80	100	120	140	160	180	200	220	240	260	280	300	320
0	0.328	0.327	0.325	0.323	0.322	0.321	0.318	0.291	0.269	0.250	0.238	0.225	0.214	0.205	0.198
	35	39	48	55	63	70	77	80	80	80	80	80	80	80	80
5	0.456	0.455	0.453	0.451	0.449	0.448	0.420	0.377	0.336	0.298	0.263	0.225	0.203	0.181	x
	36	41	50	59	67	75	80	80	80	80	80	80	80	80	x
10	0.584	0.583	0.581	0.581	0.578	0.576	0.512	0.457	0.398	0.340	0.296	0.244	x	x	x
	38	41	51	61	70	78	80	80	80	80	80	80	x	x	x
15	0.713	0.712	0.711	0.708	0.706	0.680	0.601	0.527	0.457	0.390	0.319	x	x	x	x
	40	43	51	62	72	80	80	80	80	80	80	x	x	x	x
20	0.841	0.841	0.839	0.837	0.835	0.790	0.689	0.599	0.512	0.411	0.328	x	x	x	x
	40	44	53	62	72	80	80	80	80	80	80	x	x	x	x
25	0.971	0.971	0.968	0.966	0.964	0.900	0.781	0.667	0.571	0.454	x	x	x	x	x
	38	44	54	63	73	80	80	80	80	80	x	x	x	x	x
30	1.100	1.099	1.097	1.095	1.093	1.019	0.866	0.757	0.619	0.482	x	x	x	x	x
	34	42	54	65	73	80	80	80	80	80	x	x	x	x	x
35	1.229	1.228	1.227	1.225	1.223	1.147	0.968	0.821	0.671	0.508	x	x	x	x	x
	29	39	53	65	75	80	80	80	80	80	x	x	x	x	x
40	1.359	1.359	1.356	1.354	1.353	1.229	1.070	0.907	0.728	0.533	x	x	x	x	x
	22	35	51	65	76	80	80	80	80	80	x	x	x	x	x
45	1.479	1.480	1.486	1.485	1.483	1.318	1.172	0.994	0.793	0.584	x	x	x	x	x
	14	29	49	63	76	80	80	80	80	80	x	x	x	x	x
50	x	1.619	1.617	1.615	1.613	1.420	1.226	1.066	0.872	0.635	x	x	x	x	x
	x	22	46	61	75	80	80	80	80	80	x	x	x	x	x

	-COMPRESSOR LOAD FACTOR AT 80%
	-COMPRESSOR LOAD FACTOR AT 70%
	-COMPRESSOR LOAD FACTOR AT 60%
	-COMPRESSOR LOAD FACTOR AT 50%
	-COMPRESSOR LOAD FACTOR AT 40%

	-Flow rates calculated in mmscfd at 1800 RPM +/- 10%
	-BRAKE HORSE POWER (80 hp useable) +/- 10%
	-Low Differential Pressure
	-Consult Engineering

Operating Conditions: Elevation 2500 feet: SG = 0.65: RPM = 1800:
 Ambient Temperature 95 deg. F: Inlet Temperature 60 deg.F.
 The maximum Differential Pressure for this compressor is 200 psig.

This chart is created by Jiro Engineering using Gardner Denver sizing program - Rotosize version 4.40.