

GAS COMPRESSOR

UNIT: CB41

PERFORMANCE

Base Horsepower	30 HP
Packager	Vapor-Tech Systems
Year Built	1994
Suction Pressure (typical range) *	0 PSI
Discharge Pressure (maximum) *	50 PSI
Flow Rate (typical range) *	
Gas Source	Sweet, and dry
<i>*Performance is subject to confirmation on site specific process conditions</i>	

MAJOR EQUIPMENT

Gas Compressor	Included
----------------	----------

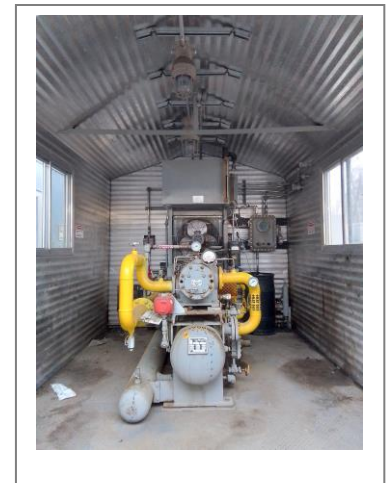
DRIVER

Style	US Electrical Motors
Rating	30 HP
Output (RPM)	1180 RPM
Serial #	651823



COMPRESSOR

Make	Ro-Flo
Model	7 DB
Throws	
Stages	
Stroke	
Rated RPM	1465 RPM
Distance Pieces	
Serial #	4002-78808-1



SCRUBBERS

	Size	CRN	Serial Number	MAWP	Temp	RT	HT
Suction		M0728.2	H16-S4	689 PSI			

CONTROL PANEL

Make	
Model	
HMI / PLC	

END DEVICES

	Quantity
LEL Detection	
H2S Detection	
Fire Detection	

SKID CONNECTIONS

Suction Inlet Flange	
Discharge Flange	
Flare	
Drain	

DRAIN TANK

Capacity	In Skid
----------	---------

SHIPPING DIMENSIONS

Width	
Length	
Height	
Weight Estimate (dry)	

CERTIFICATION

Vessel	ASME Sec. VIII Div. 1
Piping	ASME B31.3
Province(s) of Registration	AB, BC
Area Classification	Class 1 Zone 2
Service	Sweet



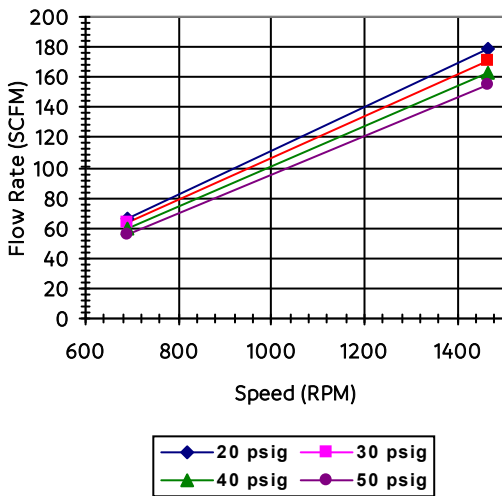
2540 West Everett Street
 Appleton, WI 54914 USA
 P: 920-574-2651
www.ro-flo.com



Model 7D

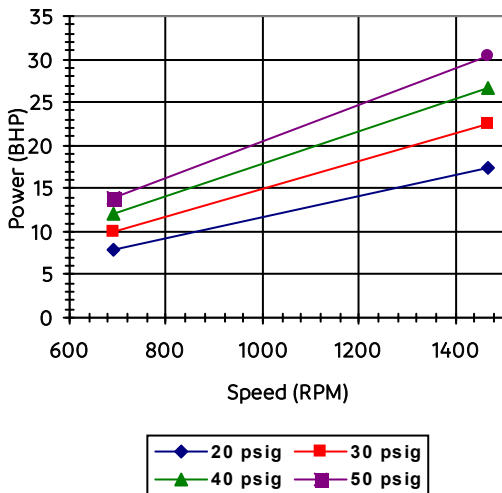
Product Data Sheet

GENERAL PERFORMANCE



TECHNICAL DATA

Inlet Connection.....	3" ANSI Class 150 Flat Face Flange
Discharge Connection.....	3" ANSI Class 150 Flat Face Flange
Operating Speed Range.....	690 RPM - 1465 RPM
Maximum Allowable Working Pressure.....	80 psig (552 kPag)
Casing Hydrostatic Test Pressure.....	Minimum of 1.5X MAWP
Maximum Allowable Operating Temp.....	350 °F (177 °C)
Shaft Seal.....	Single face or double opposed
Bearings.....	Custom designed, heavy duty roller bearing
Lubrication.....	Once through oil injection - 7 points (lubrication system provided by others)
Drive Type.....	Direct couple or belt drive, suitable for VFD
Shaft End.....	Ø 1.625 inches (41.28 mm) at coupling
Vibration.....	Typical vertical or horizontal overall vibration velocity amplitude is approximately 0.4 in./sec. peak
Approximate Compressor Weight.....	510 lbs. (231 kg)



MATERIALS OF CONSTRUCTION

Casing (cylinder heads).....	Ductile Iron ASTM A395 60-40-18 (NACE MR0175-2015 compliant)
Rotor.....	Single Piece AISI 1144
Vanes.....	Laminated kevlar cloth in a phenolic resin
Bearings.....	Steel cage, alloy steel rollers and races (no yellow metals)
Gaskets.....	Neoprene (Viton available)
O-rings.....	Buna (Viton available)
Seals.....	Options available
Studs.....	ASTM A193 B7
Seal Rings.....	PTFE based material
Dowel Pins.....	ASME B18.8.2
Finish.....	Two part epoxy paint

Curve based on gas with S.G. 0.65, Ts = 80 °F, Ps = 0 psig

For more product information, including General Arrangement Drawings, please refer to our website: [7D Product Page](#)