

INSTRUMENT LIST

TAG No.	DESCRIPTION
HI-100/10/120	CCI WX 24X30 (H2430) NAT GAS 12V, GRILL (AC-GRILL-2430), VENT HOOD (AC-CHASSY-24), TEMP CTRL 24X30 (AC-TC-16000N-7), REGULATOR (AC-R-912)
V-100	30' START CABLES
V-100A/B	VERTICAL SEPARATOR, 30"00 X 10'-0"/S/S X 1345 PSI
V-120	VERTICAL FUEL GAS POT, 6"NPS X 18"/S/S X 1345 PSI
P-100-101	VERTICAL SULPA TREATER, 24"00 X 10'-0"/S/S X 250 PSI
TK-100	TEXSTEAM PUMP, MODEL MX3-1
FE 100H/002/10/3	WESTEEL 250 GALLON OVAL TANK DUAL WALLED TANK C/W SADDLE
FR/PR 1001	CANALITA SR. METER RUN, 4" 600 ANSI SCH. 80, AGA 2000, FOE, FLOW CONDITIONER, 70" OAL, C/W 2.00" ORIFICE
PRV 1001/004	BARTON 202N 2 PEN, 0-1500 PSI, 0-200" WC, C/W 5V SS MANFOLD
PRV 1005	FISHER 627 REG, 1" NPT, 70-150 PSI, 1/8" ORIFICE C/W NYLON DISC
PRV 1006-1011	FISHER 67CFR, 1/4", 0-125 PSI, VENTED
PSV 1001	FISHER 67CFR, 1/4", 0-35 PSI, VENTED
PSV 1002	FARRIS 26HA13-120, 2" 600 X 3" 150, SET AT 1345 PSI, NACE PRIMARY
PSV 100-101	TAYLOR 8200, 1" MNPT X 1" FNPT, SET AT 100 PSI
LCV 1001/1002	NUPRO SS-4R3A5EP, 1/4" MNPT X FNPT, SET AT 1345 PSI
LG 1001/1002	NORRISEAL 2220, 2" 600 ANSI FC, C/W 1 1/4" NACE TRIM
L/RG 100-101	QUALITY 04R20 LEVEL GAUGE C/W GAUGE COCKS, NACE
LG 100	L86 48" TANK GAUGE, S6488C
LC 1001/1002	L86 48" TANK GAUGE, S6488C
FOI 1001	FISHER L2 CONTROLLER, DIRECT SNAP ACTING
PI 1001/1003	PRIMARY FLOW TURBINE, 3" X 2" 600, MAG PICK UP C/W
PI 1002	FOI2-P FLUIDWELL TOTALIZER
TI/TW 1001/1002	WGI PL, 4", 300 PSI, SS, BTM, 1/2", LF
LSH/LSHH 1001	WGI TI, 3" X 6" ST, 0/250F C/W 316SS TOW
ESDV 1001	SOR 1530C-62A-C-10-PS PNEUM, 316SS BDX
EY 1001	BALON BV, 4" 600 ANSI RF, NACE (CUSTOMER SUPPLIED) C/W
PCV/DPC 1001	BETTIS EL-O-MATIC ESA0950-4/A/L2-LT, FC
PSHH 1001	AMOT 40S7-CP SWITCHING VALVE, LATCH RESET
FI 1002	FISHER 667-ET CONTROL VALVE, 4" 600 ANSI, SIZE 45 FC NACE C/W
F-100	KIMRAY 200-PDC DIFFERENTIAL PRESSURE CONTROLLER, 0-1500 PSI
	CVS 7970 HIGH PRESSURE SENSOR, SET AT 1300 PSI
	PRIMARY FLOW TURBINE, 1" NPT, MAG PICK UP C/W FOI2-P TOTALIZER
	SUPER DRY FILTER, MODEL D-1 C/W MOISTURE INDICATOR

ITEM	QTY.	DESCRIPTION
BV-1	5	BALON BV, 4" 600 ANSI RF, NACE (CUSTOMER SUPPLIED)
BV-2	1	BALON BV, 3" 600 ANSI RF, NACE (CUSTOMER SUPPLIED)
BV-3	4	BALON BV, 3" 600 ANSI RF, NACE (CUSTOMER SUPPLIED)
BV-4	4	BALON BV, 2" 600 ANSI RF, NACE (CUSTOMER SUPPLIED)
BV-5	1	BALON BV, 2" NPT 2500 PSI, NACE (CUSTOMER SUPPLIED)
BV-6	23	BALON BV, 1" NPT 3000 PSI, NACE (CUSTOMER SUPPLIED)
BV-7	2	BALON BV, 3/4" NPT 3000 PSI, NACE (CUSTOMER SUPPLIED)
BV-8	4	BALON BV, 1/2" NPT 3000 PSI, NACE (CUSTOMER SUPPLIED)
BV-9	7	MAS BALL VALVE, 1/2" NPT, NACE
CV-1	2	DUAL WAFER CHK VLV, 4" 600 ANSI, NACE
CV-2	1	DUAL WAFER CHK VLV, 3" 600 ANSI, NACE
CV-3	3	WHEATLEY 820 CHK VLV, 1" NPT, 2250 PSI, NACE
CV-4	2	WGI BALL CHECK, 1/2", SS
NV-1	8	WGI NV, 1/2" MFX, SS
NV-2	10	WGI NV, 1/4" MFX, SS
ST-1	2	ALTA 'Y' STRAINER, 2" 600 ANSI, NACE

NOTES:
 ALL TUBING TO BE 316SS
 PROCESS/SENSING: 1/2" X 0.049" W.T. 316SS SMLS TUBING
 INSTRUMENT LINES: 3/8" X 0.035" W.T. 316SS SMLS TUBING
 ALL TUBE FITTINGS TO BE SWAGelok SS
 ALL INSTRUMENTS TO BE VENTED OUTSIDE INCLUDING REGULATORS DIAPHRAGMS ETC.

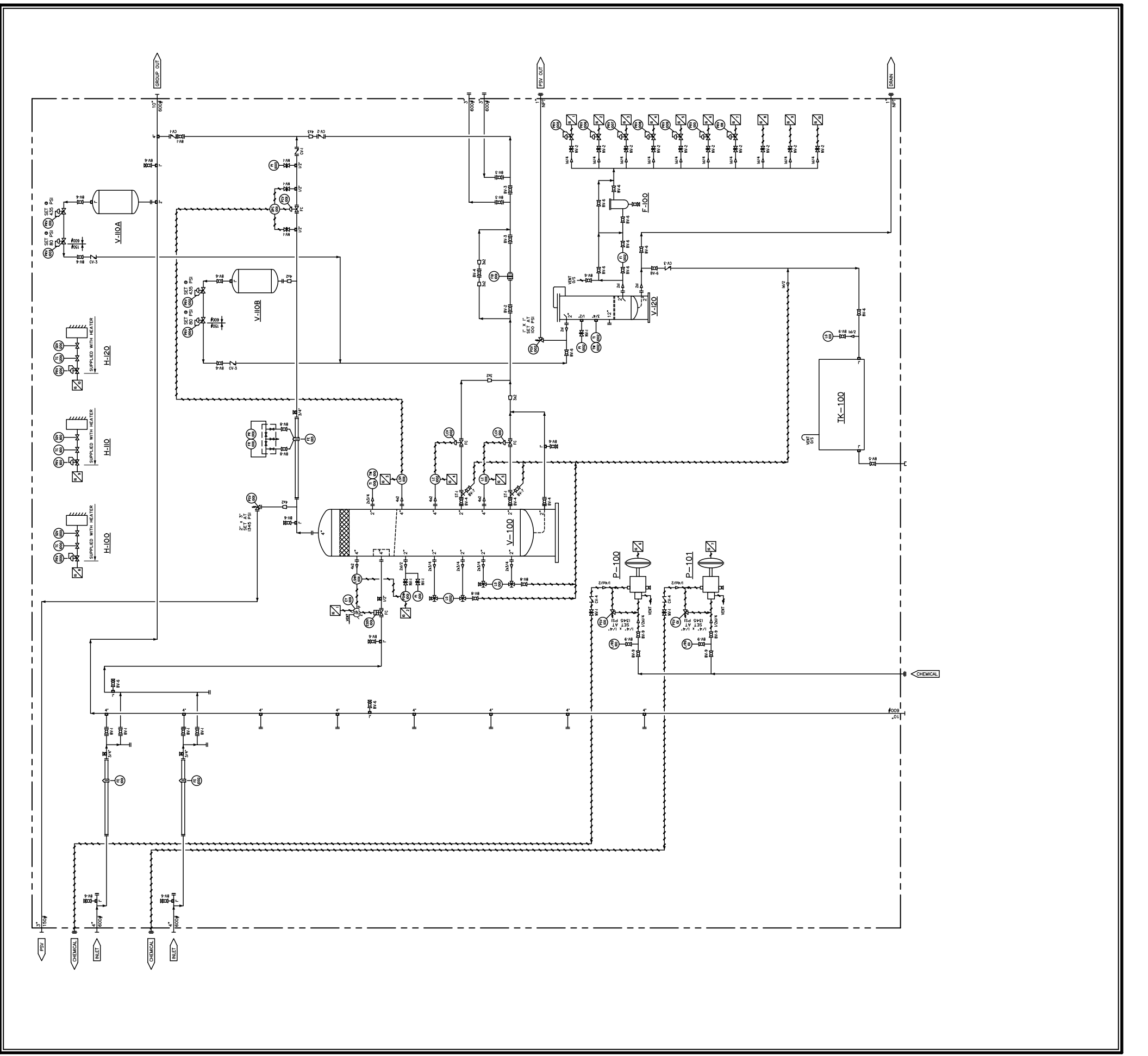
REV.	MM	DD	YY	DESCRIPTION	BY	CHK'D	APP'D
06	18	10		AS BUILT	RB	RB	
01	27	10		ISSUED FOR CONSTRUCTION	GV	GV	

CLIENT
EOG RESOURCES LIMITED
 925-23rd Street S.W. Medicine Hat
 Alberta, Canada, T1A 8R1 (403) 526-3142

PROJECT
 8 WELL TEST SEPARATOR PACKAGE
 d-28-F/94-0-10

TITLE
 P&ID

Wd No.: 33506
DATE: 01/22/10
REV. No.: 1
SCALE: N.T.S.
DATE: 06/18/10
CAD No.: 35506-P&ID



BILL OF MATERIAL

ITEM QTY.	DESCRIPTION
1	SPOOL NO. 1 - SEE DRAWING 33506-SPOOL-1
2	SPOOL NO. 2 - SEE DRAWING 33506-SPOOL-1
3	SPOOL NO. 3 - SEE DRAWING 33506-SPOOL-1
4	SPOOL NO. 4 - SEE DRAWING 33506-SPOOL-1
5	SPOOL NO. 5 - SEE DRAWING 33506-SPOOL-1
6	SPOOL NO. 6 - SEE DRAWING 33506-SPOOL-1
7	SPOOL NO. 7 - SEE DRAWING 33506-SPOOL-1
8	SPOOL NO. 8 - SEE DRAWING 33506-SPOOL-1
9	SPOOL NO. 9 - SEE DRAWING 33506-SPOOL-1
10	SPOOL NO. 10 - SEE DRAWING 33506-SPOOL-2
11	SPOOL NO. 11 - SEE DRAWING 33506-SPOOL-2
12	SPOOL NO. 12 - SEE DRAWING 33506-SPOOL-3
13	SPOOL NO. 13 - SEE DRAWING 33506-SPOOL-3
14	SPOOL NO. 14 - SEE DRAWING 33506-SPOOL-2
15	SPOOL NO. 15 - SEE DRAWING 33506-SPOOL-3
16	SPOOL NO. 16 - SEE DRAWING 33506-SPOOL-3
17	SPOOL NO. 17 - SEE DRAWING 33506-SPOOL-3
18	SPOOL NO. 18 - SEE DRAWING 33506-SPOOL-3
19	SPOOL NO. 19 - SEE DRAWING 33506-SPOOL-3
20	SPOOL NO. 20 - SEE DRAWING 33506-SPOOL-3
21	REF. 4" 600 ANS. SAISON
22	REF. 3" 600 ANS. SAISON
23	REF. 4" 600 ANS. TAPPED T. SAISON
24	REF. 3" 600 ANS. TAPPED T. SAISON
25	REF. 2" 600 ANS. TAPPED T. SAISON
26	REF. 2" 600 ANS. SAISON
27	REF. 2" 600 ANS. SAISON
28	3/8" SPIRALWLD GSKT. 4" 600 ANS. WSSB
29	3/8" SPIRALWLD GSKT. 3" 600 ANS. WSSB
30	3/8" SPIRALWLD GSKT. 2" 600 ANS. WSSB
31	3/8" SPIRALWLD GSKT. 2" 600 ANS. WSSB
32	8" 87M STD. 7/8" X 8 3/4" SABS-87M
33	8" 87M STD. 7/8" X 5 1/2" SABS-87M
34	8" 87M STD. 3/4" X 3 3/4" SABS-87M
35	8" 87M STD. 3/4" X 4 3/4" SABS-87M
36	8" 87M STD. 3/8" X 4" SABS-87M
37	2" 87M STD. 7/8" X 4" SABS-87M
38	2" 87M STD. 7/8" X 4" SABS-87M
39	2" 87M STD. 7/8" X 4" SABS-87M
40	2" 87M STD. 7/8" X 4" SABS-87M
41	1" BAYD COUPLER. 2" ALUM 1000-ALUM-B
42	1" BAYD DUST PLUG. 2" ALUM 1000-ALUM-B
43	
44	
45	

NOTES:
 ALL STD LENGTHS GIVEN ARE THREAD TO THREAD.
 SHIPPING DIMENSIONS 12" WIDE X 46" LONG X 14" HIGH.
 ALL DIMENSIONS TO FACE UNLESS NOTED OTHERWISE.
 ALL THREADED PIPING TO BE 3000 PSI.
 ALL THREADED FITTINGS TO BE 3000 PSI.

REV.	MM	DD	YY	DATE	DESCRIPTION	BY	CHK'D	SIGN'D
06	18	10			AS BUILT	RB		
01	27	10			ISSUED FOR CONSTRUCTION	GV		

BROMLEY
 MECHANICAL SERVICES
 925-23rd Street S.W. Medicine Hat
 Alberta, Canada, T1A 7G2 (403) 526-3142

CLIENT
EOG RESOURCES LIMITED

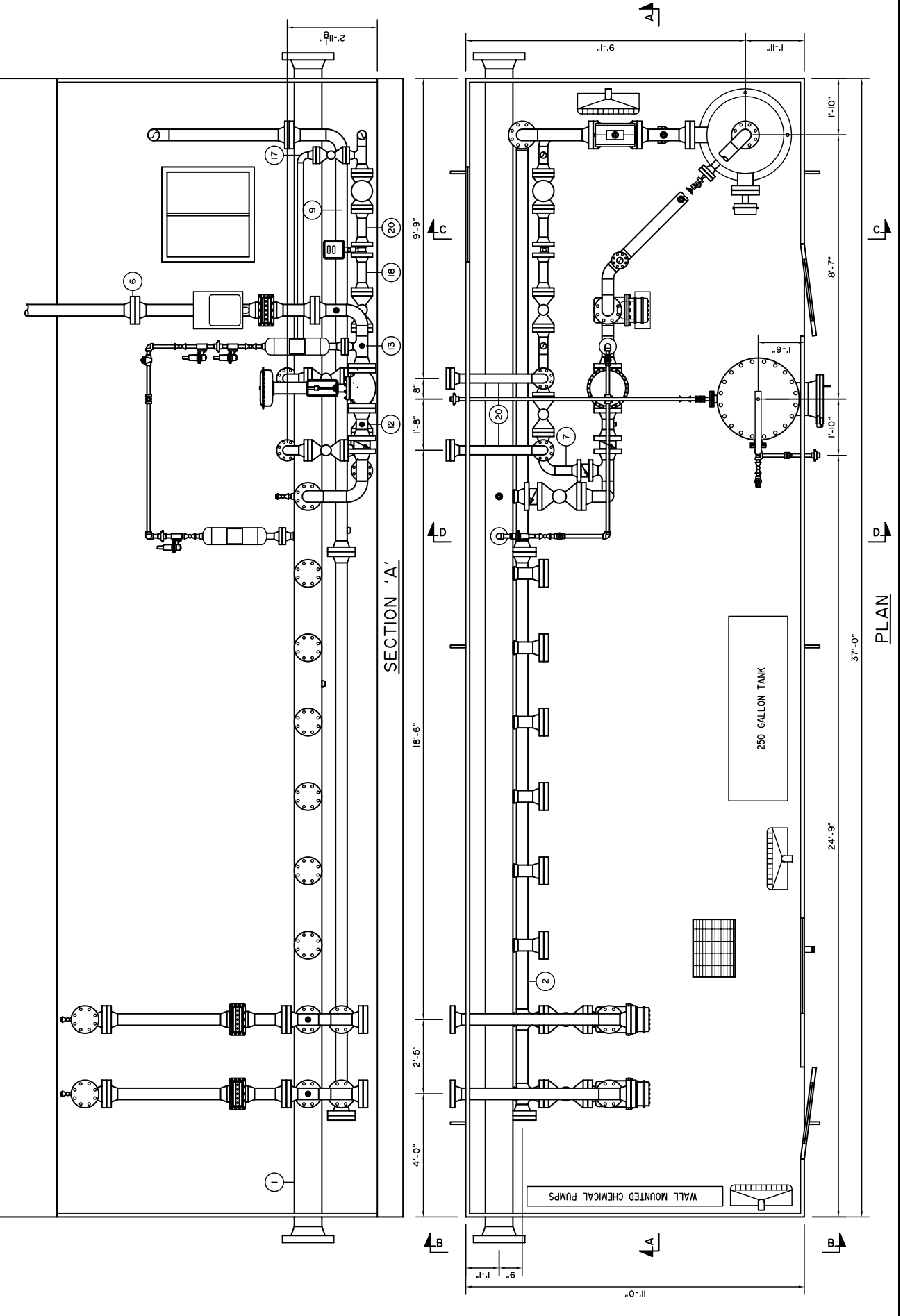
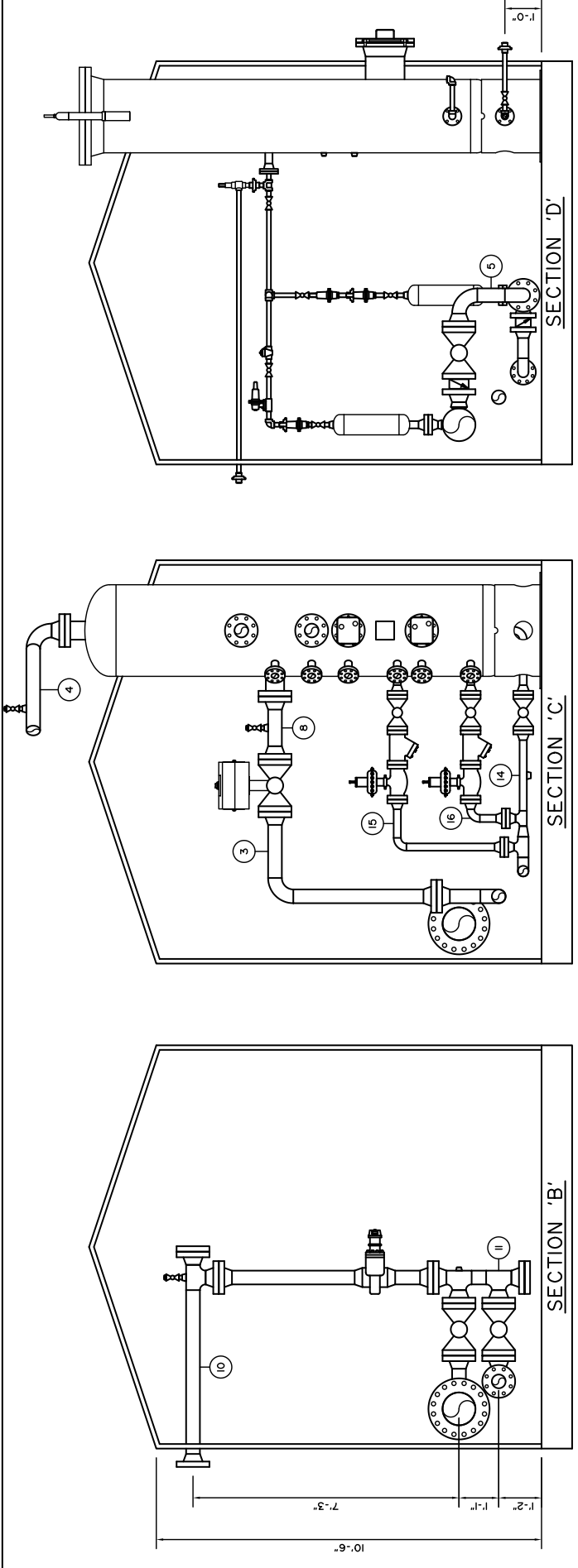
PROJECT
8 WELL TEST SEPARATOR PACKAGE d-28-F/94-0-10

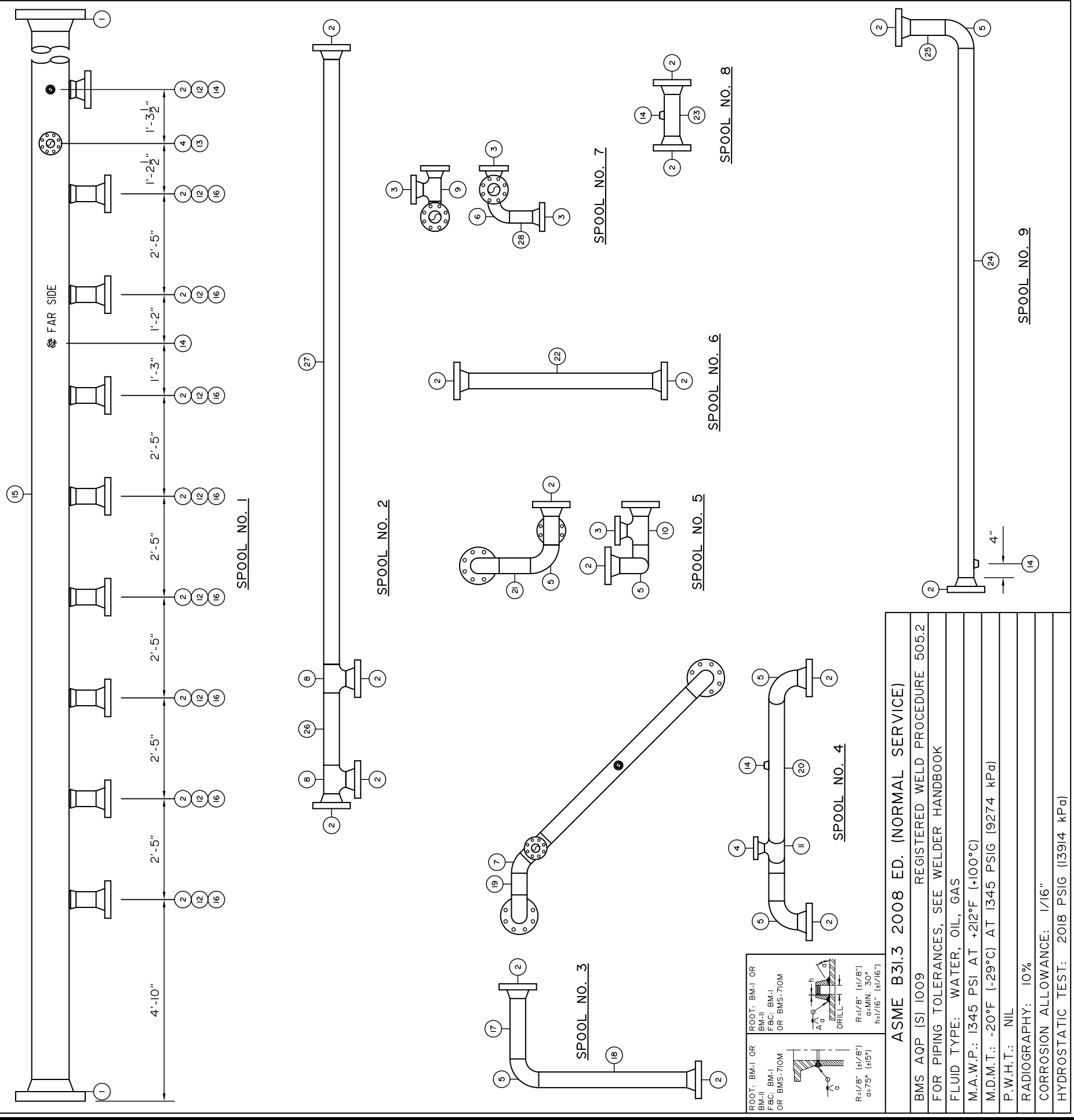
TITLE
PIPING LAYOUT

Wd. No.: 33506
 DRAWN BY: G. VANDERMOLLEN
 DATE: 01/22/10

REV. No.: 1
 SCALE: 1/2"=1'-0"

DATE: 06/18/10
 CAD No.: 33506-LAYOUT





BILL OF MATERIAL

ITEM	QTY.	DESCRIPTION
1	2	RFWN, 10" 600 ANSI SCH. 80, SAI05N
2	25	RFWN, 4" 600 ANSI SCH. 80, SAI05N
3	4	RFWN, 3" 600 ANSI SCH. 80, SAI05N
4	2	RFWN, 2" 600 ANSI SCH. 80, SAI05N
5	6	WELD 90, 4" SCH. 80 LR, SA234WPB
6	1	WELD 90, 3" SCH. 80 LR, SA234WPB
7	1	WELD 45, 4" SCH. 80 LR, SA234WPB
8	2	WELD TEE, 4" SCH. 80, SA234WPB
9	1	WELD TEE, 3" SCH. 80, SA234WPB
10	1	WELD RED TEE, 4" X 3" SCH. 80, SA234WPB
11	1	WELD RED TEE, 4" X 2" SCH. 80, SA234WPB
12	9	WOL, 4" SCH. 80, SAI05N
13	1	WOL, 2" SCH. 80, SAI05N
14	5	TOL, 1" 3M, SAI05N
15	1	PIPE, 10" SCH. 80 (0.594"), SAI06B X 45 1/2" LONG
16	8	PIPE, 4" SCH. 80 (0.337), SAI06B X 5 3/4" LONG
17	1	PIPE, 4" SCH. 80 (0.337), SAI06B X 17 3/8" LONG
18	1	PIPE, 4" SCH. 80 (0.337), SAI06B X 42 9/16" LONG
19	1	PIPE, 4" SCH. 80 (0.337), SAI06B X 6 1/4" LONG
20	1	PIPE, 4" SCH. 80 (0.337), SAI06B X 59 1/16" LONG
21	1	PIPE, 4" SCH. 80 (0.337), SAI06B X 9" LONG
22	1	PIPE, 4" SCH. 80 (0.337), SAI06B X 52 7/8" LONG
23	1	PIPE, 4" SCH. 80 (0.337), SAI06B X 12" LONG
24	1	PIPE, 4" SCH. 80 (0.337), SAI06B X 152 1/4" LONG
25	1	PIPE, 4" SCH. 80 (0.337), SAI06B X 10" LONG
26	1	PIPE, 4" SCH. 80 (0.337), SAI06B X 20 3/4" LONG
27	1	PIPE, 4" SCH. 80 (0.337), SAI06B X 174" LONG
28	1	PIPE, 3" SCH. 80 (0.300), SAI06B X 6 5/8" LONG
29		
30		

△	
△	06	18	10	AS BUILT	RB	RB
△	01	27	10	ISSUED FOR CONSTRUCTION	GV	GV
REV. No.	MM	DD	YY	DATE	BY	CHK'D APP'D

BROMLEY MECHANICAL SERVICES
 925 - 23rd Street S.W., Medicine Hat, Alberta, Canada, T1A 8R1 (403) 526-3142

CLIENT: **EOG RESOURCES**

PROJECT: **8 WELL
TEST SEPARATOR PACKAGE
d-28-F/94-0-10**

TITLE: **PIPING SPOOLS 1-9**

Wo No.: **33506**
 DRAWN BY: **G. VANDERMOLEN** REV. No.: **1** DATE: **MM/DD/YY 06/18/10**
 DATE: **MM/DD/YY 01/22/10** SCALE: **3/8"=1'** CAD No.: **33506-SPOOLS-1**

ASME B31.3 2008 ED. (NORMAL SERVICE)

BMS AQP (S) 1009 REGISTERED WELD PROCEDURE 505.2
 FOR PIPING TOLERANCES, SEE WELDER HANDBOOK

FLUID TYPE: WATER, OIL, GAS

M.A.W.P.: 1345 PSI AT +212°F (+100°C)

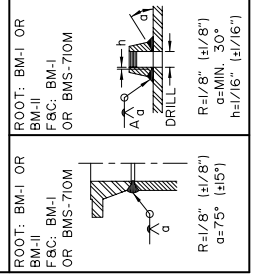
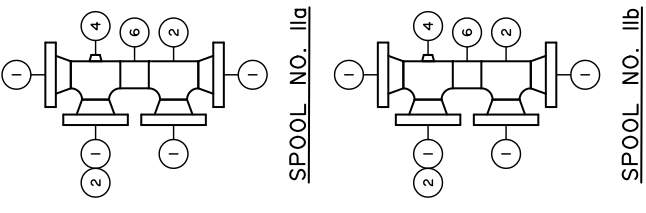
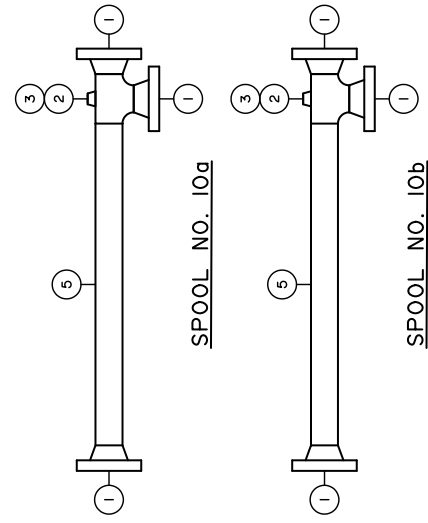
M.D.M.T.: -20°F (-29°C) AT 1345 PSIG (9274 kPa)

P.W.H.T.: NIL

RADIOGRAPHY: 10%

CORROSION ALLOWANCE: 1/16"

HYDROSTATIC TEST: 2018 PSIG (13914 kPa)



BILL OF MATERIAL

ITEM	QTY.	DESCRIPTION
1	14	RFWN, 4" 600 ANSI SCH. 80, SAI05N
2	6	WELD TEE, 4" SCH. 80, SA234WPB
3	2	TOL, 1" 3M, SAI05N
4	2	TOL, 3/4" 3M, SAI05N
5	2	PIPE, 4" SCH. 80 (0.337), SAI06B X 53 5/8" LONG
6	2	PIPE, 4" SCH. 80 (0.337), SAI06B X 4 3/4" LONG
7		
8		
9		
10		
11		
12		
13		
14		
15		

REV. No.	MM	DD	YY	DATE	DESCRIPTION	BY	CHK'D	APP'D
06	18	10			AS BUILT	RB	RB	
01	27	10			ISSUED FOR CONSTRUCTION	GV	GV	

ASME B31.3 2008 ED. (NORMAL SERVICE)

BMS AQP (S) 1009 REGISTERED WELD PROCEDURE 505.2
FOR PIPING TOLERANCES, SEE WELDER HANDBOOK

FLUID TYPE: WATER, OIL, GAS

M.A.W.P.: 1345 PSI AT +212°F (+100°C)

M.D.M.T.: -20°F (-29°C) AT 1345 PSIG (9274 kPa)

P.W.H.T.: NIL

RADIOGRAPHY: 10%

CORROSION ALLOWANCE: 1/16"

HYDROSTATIC TEST: 2018 PSIG (13914 kPa)

BROMLEY MECHANICAL SERVICES
925 - 23rd Street S.W., Medicine Hat, Alberta, Canada, T1A 8R1 (403) 526-3142

CLIENT: **EOG RESOURCES**

PROJECT: **8 WELL
TEST SEPARATOR PACKAGE
d-28-F/94-0-10**

TITLE: **PIPING SPOOLS 10-II**

Wo No.: **33506**

DRAWN BY: **G. VANDERMOLEN** REV. No.: **1** DATE: **MM/DD/YY 06/18/10**

DATE: **MM/DD/YY 01/22/10** SCALE: **3/8"=1'** CAD No.: **33506-SP00LS-2**

BILL OF MATERIAL

ITEM	QTY.	DESCRIPTION
1	4	RFWN, 4" 600 ANSI SCH. 80, SAI05N
2	12	RFWN, 3" 600 ANSI SCH. 80, SAI05N
3	10	RFWN, 2" 600 ANSI SCH. 80, SAI05N
4	3	WELD 90, 3" SCH. 80 LR, SA234WPB
5	4	WELD 90, 2" SCH. 80 LR, SA234WPB
6	1	WELD TEE, 3" SCH. 80, SA234WPB
7	1	WELD TEE, 2" SCH. 80, SA234WPB
8	3	WELD RED TEE, 3" X 2" SCH. 80, SA234WPB
9	1	WELD RED TEE, 4" X 2" SCH. 80, SA234WPB
10	1	WELD CONC, 3" X 2" SCH. 80, SA234WPB
11	1	TOL, 1" 3M, SAI05N
12	1	TOL, 3/4" 3M, SAI05N
13	2	TOL, 1/2" 3M, SAI05N
14	2	PIPE, 4" SCH. 80 (0.337), SAI06B X 4" LONG
15	1	WELD 90, 4" SCH. 80 LR, SA234WPB
16	1	PIPE, 3" SCH. 80 (0.300), SAI06B X 6" LONG
17	1	PIPE, 3" SCH. 80 (0.300), SAI06B X 8" LONG
18	1	PIPE, 3" SCH. 80 (0.300), SAI06B X 7 3/8" LONG
19	2	PIPE, 3" SCH. 80 (0.300), SAI06B X 28 1/4" LONG
20	1	PIPE, 4" SCH. 80 (0.337), SAI06B X 8" LONG
21	1	PIPE, 2" SCH. 80 (0.218), SAI06B X 28 13/16" LONG
22	1	PIPE, 2" SCH. 80 (0.218), SAI06B X 9 3/8" LONG
23	1	PIPE, 2" SCH. 80 (0.218), SAI06B X 5 5/16" LONG
24	1	PIPE, 2" SCH. 80 (0.218), SAI06B X 18" LONG
25	1	PIPE, 2" SCH. 80 (0.218), SAI06B X 68 3/8" LONG
26	1	PIPE, 2" SCH. 80 (0.218), SAI06B X 23 1/8" LONG
27		
28		
29		
30		

△
△	06	18	10	AS BUILT	RB
△	01	27	10	ISSUED FOR CONSTRUCTION	GV
REV. No.	MM	DD	YY	DESCRIPTION	BY
					CHK'D APP'D

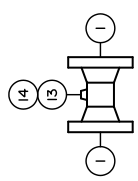
BROMLEY MECHANICAL SERVICES
 925 - 23rd Street S.W., Medicine Hat, Alberta, Canada, T1A 8R1 (403) 526-3142

CLIENT: **EOG RESOURCES**

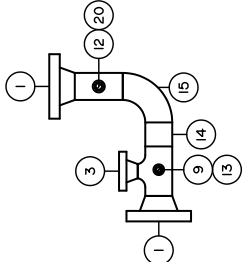
PROJECT: **8 WELL
TEST SEPARATOR PACKAGE
d-28-F/94-0-10**

TITLE: **PIPING SPOOLS 12-20**

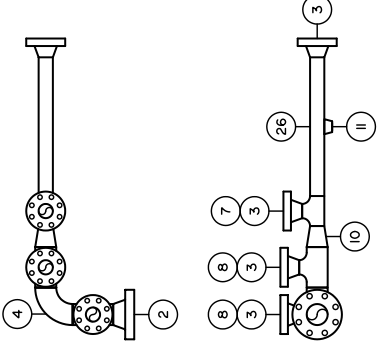
Wo No.: **33506**
 DRAWN BY: **G. VANDERMOLEN** REV. No.: **1** DATE: **MM/DD/YY 06/18/10**
 DATE: **MM/DD/YY 01/22/10** SCALE: **3/8"=1'** CAD No.: **33506-SP00LS-3**



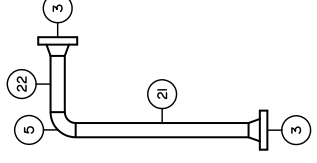
SPOOL NO. 12



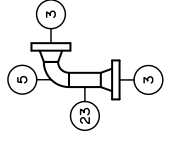
SPOOL NO. 13



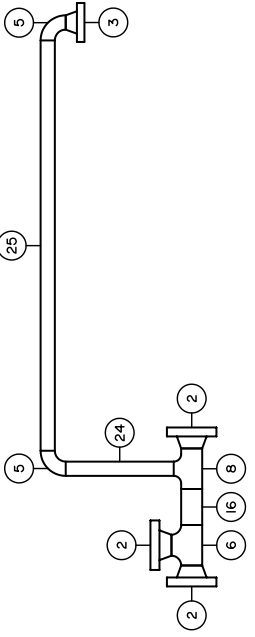
SPOOL NO. 14



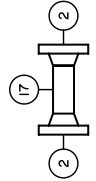
SPOOL NO. 15



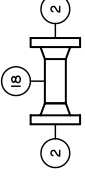
SPOOL NO. 16



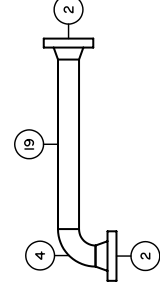
SPOOL NO. 17



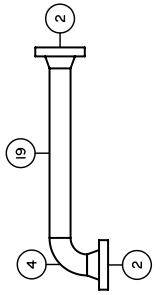
SPOOL NO. 18



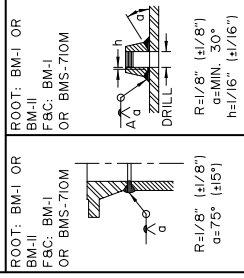
SPOOL NO. 19



SPOOL NO. 20a



SPOOL NO. 20b



ASME B31.3 2008 ED. (NORMAL SERVICE)

BMS AQP (S) 1009 REGISTERED WELD PROCEDURE 505.2
 FOR PIPING TOLERANCES, SEE WELDER HANDBOOK

FLUID TYPE: WATER, OIL, GAS

M.A.W.P.: 1345 PSI AT +212°F (+100°C)

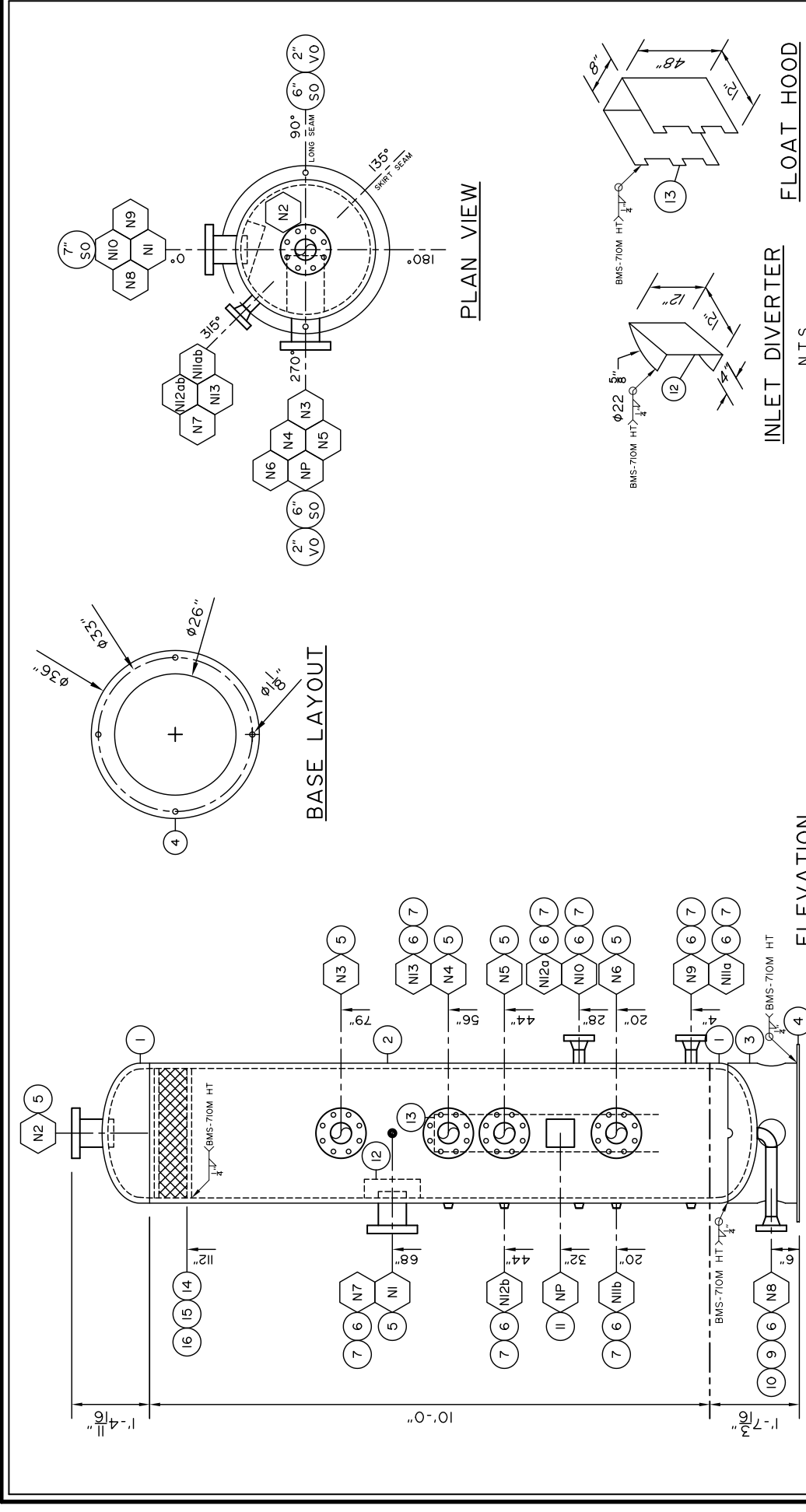
M.D.M.T.: -20°F (-29°C) AT 1345 PSIG (9274 kPa)

P.W.H.T.: NIL

RADIOGRAPHY: 10%

CORROSION ALLOWANCE: 1/16"

HYDROSTATIC TEST: 2018 PSIG (13914 kPa)



INSIDE & OUTSIDE OF NOZZLE BE ROUNDED PER UG-76(C)

NOZ. NO.	REQ'D	SIZE	RATING	TYPE OF SERVICE	NOZ. OD	NECK OUTSIDE	PROJECTION	REIF PAD	WELD DETAIL	FILLET WELD SIZE	BILL OF MAT'L	REMARKS	
NO.	NO.				INSIDE	INSIDE	INSIDE	THK	DETAIL	A	B	C	ITEM No.
N1	1	4"	600	INLET	6.00"	6 1/2	3/4	5/8	5	3/8	5/8		5
N2	1	4"	600	OUTLET	6.00"	6 1/2	3/4	5/8	5	3/8	5/8		5
N3	1	4"	600	LSH	6.00"	6 1/2	3/4	5/8	5	3/8	5/8		5
N4	1	4"	600	LSH	6.00"	6 1/2	3/4	5/8	5	3/8	5/8		5
N5	1	4"	600	LC	6.00"	6 1/2	3/4	5/8	5	3/8	5/8		5
N6	1	4"	600	LC	6.00"	6 1/2	3/4	5/8	5	3/8	5/8		5
N7	1	2"	600	PI	2.375"	6		3/8	4,6	3/8			6,7
N8	1	2"	600	DRAIN	2.375"	6		3/8	4,6	3/8			6,9,10
N9	1	2"	600	DUMP	2.375"	6		3/8	4,6	3/8			6,7
N10	1	2"	600	DUMP	2.375"	6		3/8	4,6	3/8			6,7
N11ab	2	2"	600	LG	2.375"	6		3/8	4,6	3/8			6,7
N12ab	2	2"	600	LG	2.375"	6		3/8	4,6	3/8			6,7
N13	1	2"	600	TI	2.375"	6		3/8	4,6	3/8			6,7

INSIDE & OUTSIDE OF NOZZLE BE ROUNDED PER UG-76(C)

BILL OF MATERIAL

ITEM	QTY.	DESCRIPTION
1	2	S.E. HEAD, 30"OD X 1.25" NOM (11875" MIN), SA516-70N
2	1	SHELL, 30"OD X 1.25" NOM. X 10'-0" LONG, SA516-70N
3	1	SKIRT - ROLLED PLATE, 30"OD X 0.375" X 14 13/16" LONG, SA516-70N
4	1	BASE RING, 36"OD X 26"ID X 1/2", A36/44W
5	6	RFLWN, 4" 600 ANSI X 9" OAL, SAI05N
6	9	RFWN, 2" 600 ANSI SCH. 160, SAI05N
7	9	PIPE, 2" SCH. 160 (0.344") X 2 7/8" LONG, SAI06B
8		
9	1	PIPE, 2" SCH. 160 (0.344") X 14 7/8" LONG, SAI06B
10	1	WELD 90, 2" SCH. 160 LR, SA234WPB
11	1	TAG PLATE HOLDER, SA36 & VESSEL ID PLATE, ALUM
12	1	INLET DIVERTER, 12" X 12", 1/4", SA36 (SEE DETAIL)
13	1	FLOAT HOOD, 8" X 12" X 48", 3/16", SA36 (SEE DETAIL)
14	1	DEM, 30"OD X 6"TK, 1 PC NO GRD, 9LB 316LSS
15	30'	FLAT, 1/4" X 1", A36/44W
16	6'	FLAT EXP. METAL, 3/4" X 9LB, CS
17		
18		
19		
20		

REV.	MM	DD	YY	DATE	DESCRIPTION	CALC NO.	BY	CHK'D	SIGN'D
01	06	18	10		ISSUED FOR CONSTRUCTION	33506	GV	RB	
					AS BUILT		RB		

ASME 2007 ED. 2009 ADD. CODE SECT. VIII DIV. I

BMS AQP (S) 1009 REGISTERED WELDER PROCEDURE 505.2

FOR VESSEL TOLERANCES, SEE WELDER HANDBOOK

VESEL TYPE: VERTICAL

M.A.W.P.: 1345 PSIG (9274 kPa) AT +212°F (+100°C)

M.D.M.T.: -20°F (-29°C) AT 1345 PSIG (9274 kPa)

IMPACT TESTING EXEMPT PER UCS66(a)(b), UG20f (1-5)

P.W.H.T.: 150°F FOR 75 MIN.

RADIOGRAPHY: RT-I CIRC.: FULL LONG: FULL

JOINT EFFICIENCY: HEADS: 1.00 SHELL: 1.00

CORROSION ALLOWANCE: 1/8"

HYDROSTATIC TEST: 1749 PSIG (12059 kPa)

VOLUME: 46.96ft³ (1.33m³)

WEIGHT (DRY): 5600 lb. (2540 kg)

BROMLEY MECHANICAL SERVICES

925 - 23rd Street S.W., Medicine Hat, Alberta, Canada, T1A 8R1 (403) 526-3142

CLIENT EOG RESOURCES LIMITED

PROJECT 8 WELL

TEST SEPARATOR PACKAGE

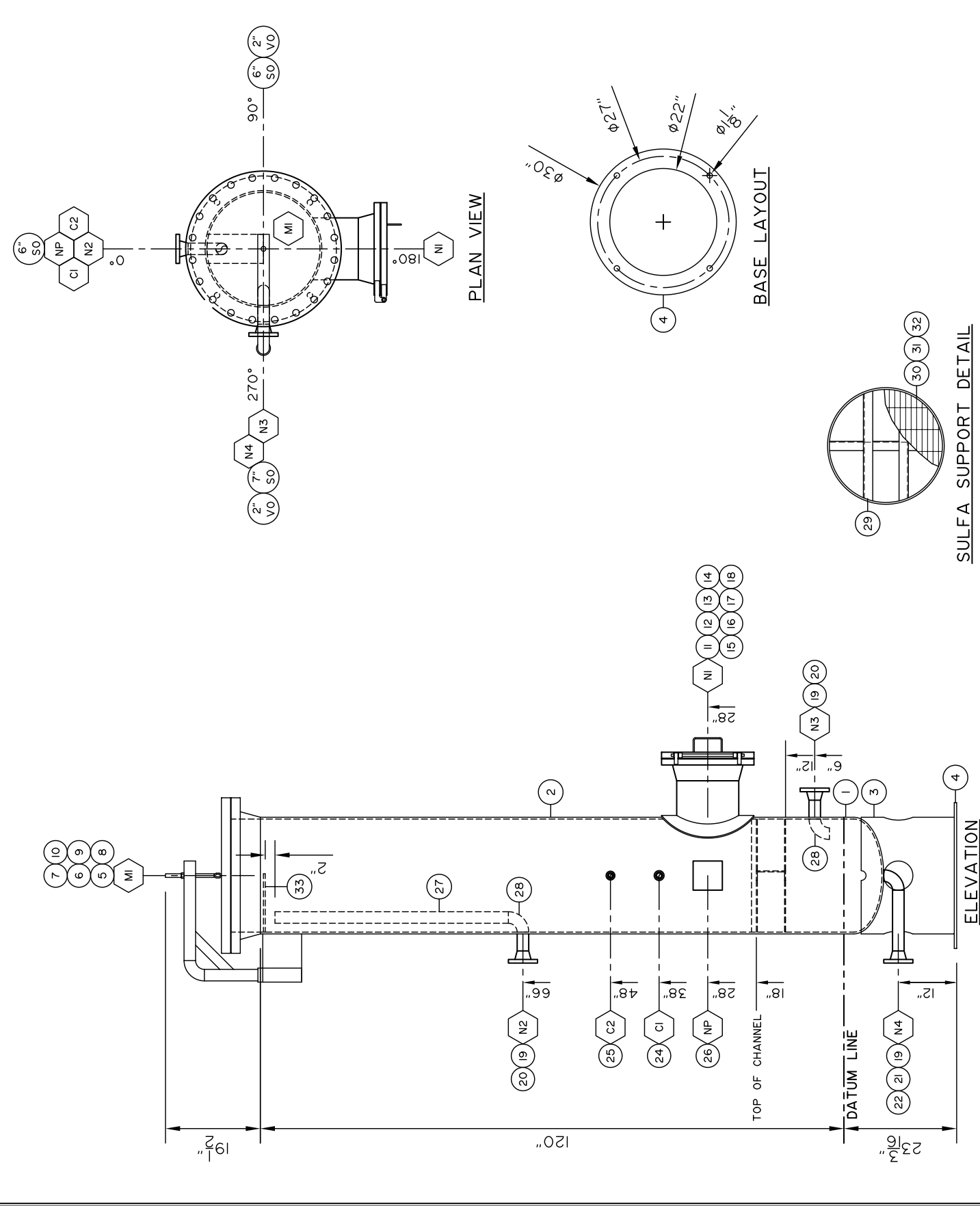
d-28-F/94-0-10

TITLE 30"OD X 10'-0" X 1345 PSI VESEL

CRN: V083821 Wb No.: 33506 SERIAL No.: 029297

DRAWN BY: G. VANDERMOLEN REV. No.: 1 DATE: MM/DD/YY 06/18/10

DATE: MM/DD/YY 01/22/10 SCALE: 3/8"=1' CAD No.: 33506-VESEL



SULFA SUPPORT DETAIL

NOZ. NO.	SIZE	RATING	TYPE OF SERVICE	OD OF NOZ NECK	INSIDE	REF PAD	WELD	FILLET	WELD SIZE	BILL OF MAT'L	REMARKS
NO.	REQD	REQD	INSPECTION	OD	X THK	OD X THK	DETAIL	A	B	C	ITEM NO.
MI	1	24"	150	12.75"	12	19" X 3/8"	4	3/8	3/8	1/4	5,6,7,8,9,10
N2	1	2"	150	2.375"	6		4,6	3/8	3/8		11,12,13,14,15,16,17,18
N3	1	2"	150	2.375"	6		4,6	3/8	3/8		19,20
N4	1	2"	150	2.375"	6		4,6	3/8	3/8		19,21,22
CI	1	3/4"	3000				10	3/8	3/8		24
C2	1	1/2"	3000				10	3/8	3/8		25

INSIDE & OUTSIDE OF NOZZLE BE ROUNDED PER UG-76(C)

BILL OF MATERIAL

ITEM	QTY.	DESCRIPTION
1	1	SE HEAD, 24"OD X 0.375" THK, 10.328" MIN, SA36-70N
2	1	PIPE, 24" SCH. STD (0.3157), SA106B X 10'-0" LONG
3	1	PIPE, 24" SCH. STD (0.3157), SA106B X 10'-0" LONG
4	1	BASE RING, 30"OD X 22"ID X 1/2" A36/44W
5	1	RFWN, 24" 150 ANSI SCH. STD, SA106N
6	1	REF, 24" 150 ANSI, SA106N
7	1	316 SPIRAL WIND GSMT, 24" 150 ANSI, M3B
8	20	B7M STUD, 1/4" X 6 3/4, SA193-B7M
9	40	2HM HEX NUT, 1/4", SA194-2HM
10	1	DAVIT ARM, 18" X 24"
11	1	RFWN, 12" 150 ANSI SCH. STD, SA106N
12	1	PIPE, 12" SCH. STD (0.3751), SA106B X 9 5/16" LONG
13	1	ROLLED REPAD, SA36-70N 18"OD X 3/8" THK, ROLLED TO 24"ID
14	1	REF, 12" 150 ANSI, SA106N
15	1	316 SPIRAL WIND GSMT, 12" 150 ANSI, M3B
16	12	B7M STUD, 7/8" X 4 1/2, SA193-B7M
17	24	2HM HEX NUT, 7/8", SA194-2HM
18	1	HINGE - SEE DRAWING 33506-HINGE
19	3	RFWN, 2" 150 ANSI SCH. STD, SA106N
20	2	PIPE, 2" SCH. STD (0.3447) X 3 1/2" LONG, SA106B
21	1	PIPE, 2" SCH. STD (0.3447) X 12 1/2" LONG, SA106B
22	1	WELD 90, 2" SCH. STD, SA234WPB
23	1	TOL, 3/4" 3M, SA106N
24	1	TOL, 1/2" 3M, SA106N
25	1	TAG PLATE HOLDER, SA36 8 VESSEL ID PLATE, ALUM
26	1	PIPE, 2" SCH. STD (0.3157) X 48" LONG, SA106B
27	1	WELD 90, 2" SCH. STD, SA234WPB
28	2	WELD 90, 2" SCH. STD, SA234WPB
29	6	STD CHANNEL, C6 X 8.2 LB/FT, A36/44W
30	1	U BAR GRATING, 1" X 3/16", GS (23 1/8"OD), REMOVABLE
31	1	WIRE MESH, NO. 4 X 0.003", 130455 X 2 LINEAR FEET (WIRED TO BAR GRATING)
32	1	FLAT, 3/8" X 6", A36 X 12" LONG
33	1	FLAT, 3/8" X 6", A36 X 12" LONG
34	1	
35	1	

NOTES:
ALL STUD LENGTHS GIVEN ARE THREAD TO THREAD
ALL REPAIRS TO HAVE 1/4" WEEP HOLES

REV.	MM	DD	YY	DATE	DESCRIPTION	CALC.	BY	CHK'D	APP'D
06	18	10			AS BUILT			RB	RB
01	27	10			ISSUED FOR CONSTRUCTION			GV	GV

ASME 2007 ED. 2009 ADD CODE SEC. VIII DIV. 1
BMS AOP IS 1009 REGISTERED WELD PROCEDURE 505.2
FOR VESSEL TOLERANCES, SEE WELDER HANDBOOK
VESSEL TYPE: VERTICAL
M.A.W.P.: 250 PSIG (1724 kPa) AT -212°F (-100°C)
M.D.M.T.: -20°F (-29°C) AT 250 PSIG (1724 kPa)
IMPACT TESTING EXEMPT PER UG201 (I-5)
P.W.H.T.: NIL
RADIOGRAPHY: RT-1
CORROSION ALLOWANCE: 1/8"
HYDROSTATIC TEST: 325 PSIG (224 kPa)
VOLUME: 31.413 (0.88 m³)
WEIGHT (DRY): 6,500 LB (2955 kg)

BREMLEY
MECHANICAL SERVICES

925-23rd Street S.W. Medicine Hat
Alberta, Canada, T1A 0R1 (403) 526-3142

EGG
RESOURCES LIMITED

PROJECT: 8 WELL
TEST SEPARATOR PACKAGE
d-28-F/94-0-10

TITLE: 24"OD X 10'-0" X 250 PSI VESSEL

CRN No.: V0836.21 Wb No.: 33506 SERIAL No.: 029298
 DATE: 01/22/10 G. VANDERMOLEN REV. No.: 1 DATE: 06/18/10
 DATE: 01/22/10 SCALE: 3/4" = 1'-0" CAD No.: 33506-TREATER

BILL OF MATERIAL

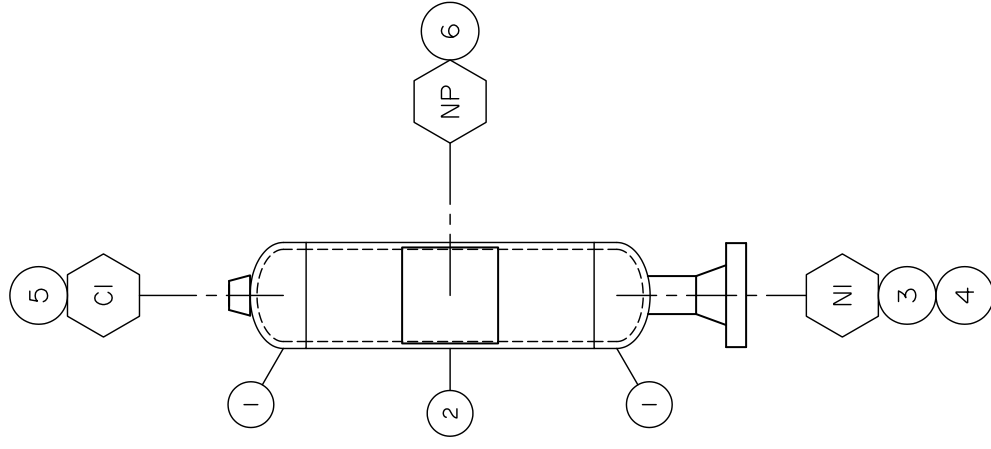
ITEM	QTY.	DESCRIPTION
1	2	WELD CAP, 6" SCH. 80, SA234WPB
2	1	PIPE, 6" SCH. 80 (0.432"), SA106B X 18" LONG
3	1	RFWN, 2" 600 ANSI SCH. 160, SA105N
4	1	PIPE, 2" SCH. 160 (0.344"), SA106B X 2 7/8" LONG
5	1	TOL, 1" 3M, SA105N
6	1	TAG PLATE HOLDER, SA36 & VESSEL ID PLATE, ALUM
7		
8		
9		
10		

NOTE:
(2) REQUIRED

REV. No.	MM	DD	YY	DATE	DESCRIPTION	CALC NO.	BY	CHK'D	SIGN'D
06	18	10			AS BUILT			RB	RB
01	27	10			ISSUED FOR CONSTRUCTION	33506		GV	GV

ASME 2007 ED. 2009 ADD. CODE SECT. VIII DIV. I
 BMS AQP (S) 1009 REGISTERED WELD PROCEDURE 505.2
 FOR VESSEL TOLERANCES, SEE WELDER HANDBOOK
 VESSEL TYPE: VERTICAL
 M.A.W.P.: 1345 PSIG (9274 kPa) AT +212°F (+100°C)
 M.D.M.T.: -20°F (-29°C) AT 1345 PSIG (9274 kPa)
 IMPACT TESTING EXEMPT PER UG20f (I-5)
 P.W.H.T.: NIL
 RADIOGRAPHY: RT-I CIRC.: FULL LONG: SMLS
 JOINT EFFICIENCY: HEADS: 1.00 SHELL: 1.00
 CORROSION ALLOWANCE: 1/16"
 HYDROSTATIC TEST: 1749 PSIG (12059 kPa)
 VOLUME: 0.29ft³ (0.01m³)
 WEIGHT (DRY): 100 lb (45 kg)

BROMLEY MECHANICAL SERVICES	
925 - 23rd Street S.W., Medicine Hat, Alberta, Canada, T1A 8R1 (403) 526-3142	
CLIENT	EOG RESOURCES LIMITED
PROJECT	8 WELL TEST SEPARATOR PACKAGE d-28-F/94-0-10
TITLE	6"NPS X 18" X 1345 PSI FUEL GAS POT
CRN:	V0835.21
W No.:	33506
SERIAL No.:	029299-300
DRAWN BY:	G. VANDERMOLEN
REV. No.:	1
DATE:	MM/DD/YY 06/18/10
SCALE:	1"=1'-0"
CAD No.:	33506-SCRUBBER



ELEVATION

NOZ. NO.	REQ'D	SIZE	RATING	TYPE OF SERVICE	PROJECTION		REIF PAD		FILLET WELD SIZE			BILL OF MAT'L			REMARKS
					OD	OF NECK	OD	x THK	WELD DETAIL	A	B	C	ITEM No.	INSPECTION	
NI	1	2"	600	INLET	2.375"	6			4,6	3/8				3,4	INSPECTION
CI	1	1"	3000	OUTLET	TOL				10	3/8				5	INSPECTION

BILL OF MATERIAL

ITEM	QTY.	DESCRIPTION
1	2	BLIND HINGE - PLATE. 3/4", SA36-44W
2	2	FLANGE HINGE - PLATE. 3/4", SA36-44W
3	1	HINGE PIN - MS ROUND, 1/2", A36/44W X 15" LONG
4	4	WASHER, 5/8"ID X 7/8"OD X 1/4" THICK
5	1	HANDLE - MS ROUND, 1/4", A36/WW4 X 12" LONG
6	1	COTTER PIN, 3/16" DIAMETER
7		
8		
9		
10		

NOTE:
INSTALL GASKET WHEN DOING HINGE FIT UP

REV. No.	DATE	DESCRIPTION	BY	CHK'D	APP'D
06	18 10	AS BUILT	RB	RB	.
01	27 10	ISSUED FOR CONSTRUCTION	GV	GV	.

BROMLEY MECHANICAL SERVICES
925 - 23rd Street S.W., Medicine Hat, Alberta, Canada, T1A 8R1 (403) 526-3142

CLIENT: **EOG RESOURCES LIMITED**

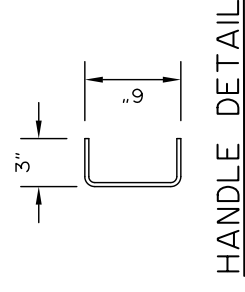
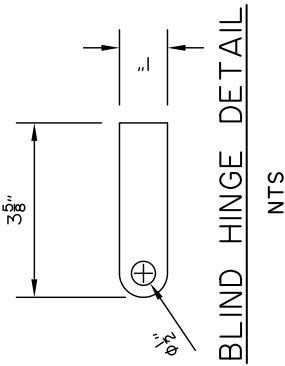
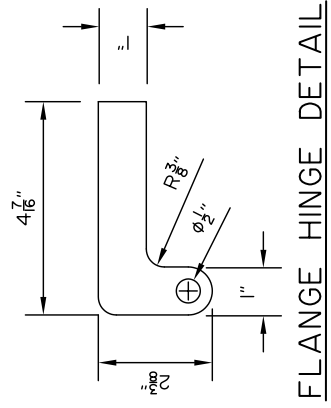
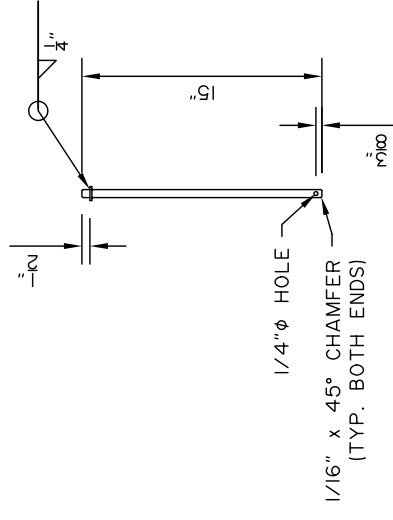
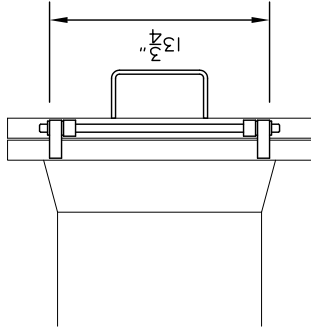
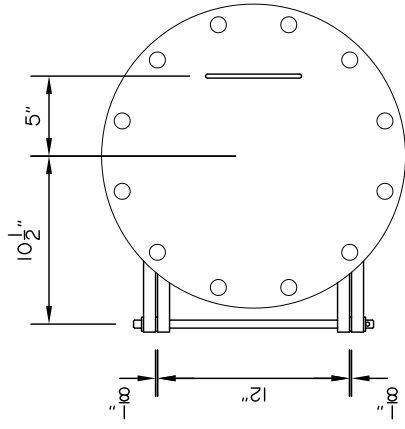
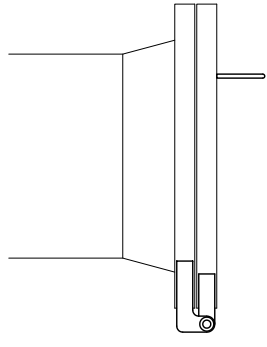
PROJECT: **8 WELL
TEST SEPARATOR PACKAGE
d-28-F/94-0-10**

TITLE: **MANWAY HINGE**

Wo No.: **33506**

DRAWN BY: **G. VANDERMOLEN** REV. No.: **1** DATE: **MM/DD/YY 06/18/10**

DATE: **MM/DD/YY 01/22/10** SCALE: **1"=1'-0"** CAD No.: **33506-HINGE**



BILL OF MATERIAL

ITEM	QTY	DESCRIPTION
1	407'	FLR PLATE 1/4" A36/44W 11'-0" X 37'-0"
2		WID X 33 LB/FT. 350W/50W X 444' LONG
3		WID X 33 LB/FT. 350W/50W X 125 3/4" LONG
4		WID X 33 LB/FT. 350W/50W X 31 1/16" LONG
5		WID X 33 LB/FT. 350W/50W X 185 3/4" LONG
6		WID X 33 LB/FT. 350W/50W X 61 3/4" LONG
7		STD CHANNEL C4 X 5.4 LB/FT X 85 3/4" LONG. 350W/50W
8		STD CHANNEL C4 X 5.4 LB/FT X 31 1/16" LONG. 350W/50W
9		STD CHANNEL C4 X 5.4 LB/FT X 76 1/16" LONG. 350W/50W
10		STD CHANNEL C4 X 5.4 LB/FT X 185 3/4" LONG. 350W/50W
11		STD CHANNEL C4 X 5.4 LB/FT X 22 1/16" LONG. 350W/50W
12		STD CHANNEL C4 X 5.4 LB/FT X 16 7/16" LONG. 350W/50W
13		STD CHANNEL C4 X 5.4 LB/FT X 22 1/4" LONG. 350W/50W
14		U BAR GRATING 1" X 3/16" CS
15		PIPE 2" SCH. 80 10.2871, SA0068 X 32' LONG
16		ANGLE L1250" X 1250" X 1/4" A36/44W
17		FLAT 1/4" X 3" A36/44W
18		LIFT LUG - FLAT 1" X 6" A36/44W X 24" LONG. SEE DETAIL
19		
20		

NOTES:
 SKID WEIGHT APPROXIMATELY 15,000 POUNDS
 INSTALL FLAT BAR AT 2" IN FROM BUILDING EDGE
 SKID TO HAVE 3" INSULATION

REV.	MM	DD	YY	DESCRIPTION	BY	CHK'D	SIGN'D
01	01	27	10	ISSUED FOR CONSTRUCTION	GV	GV	
06	18	10		AS BUILT	RB	RB	

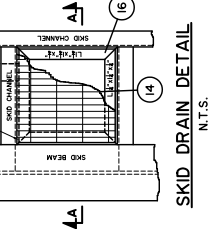
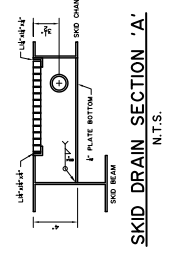
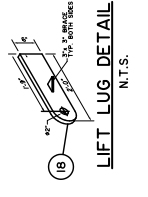
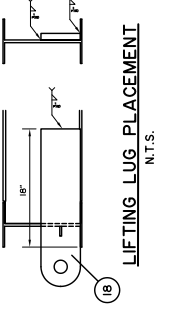
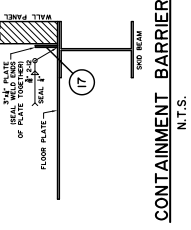
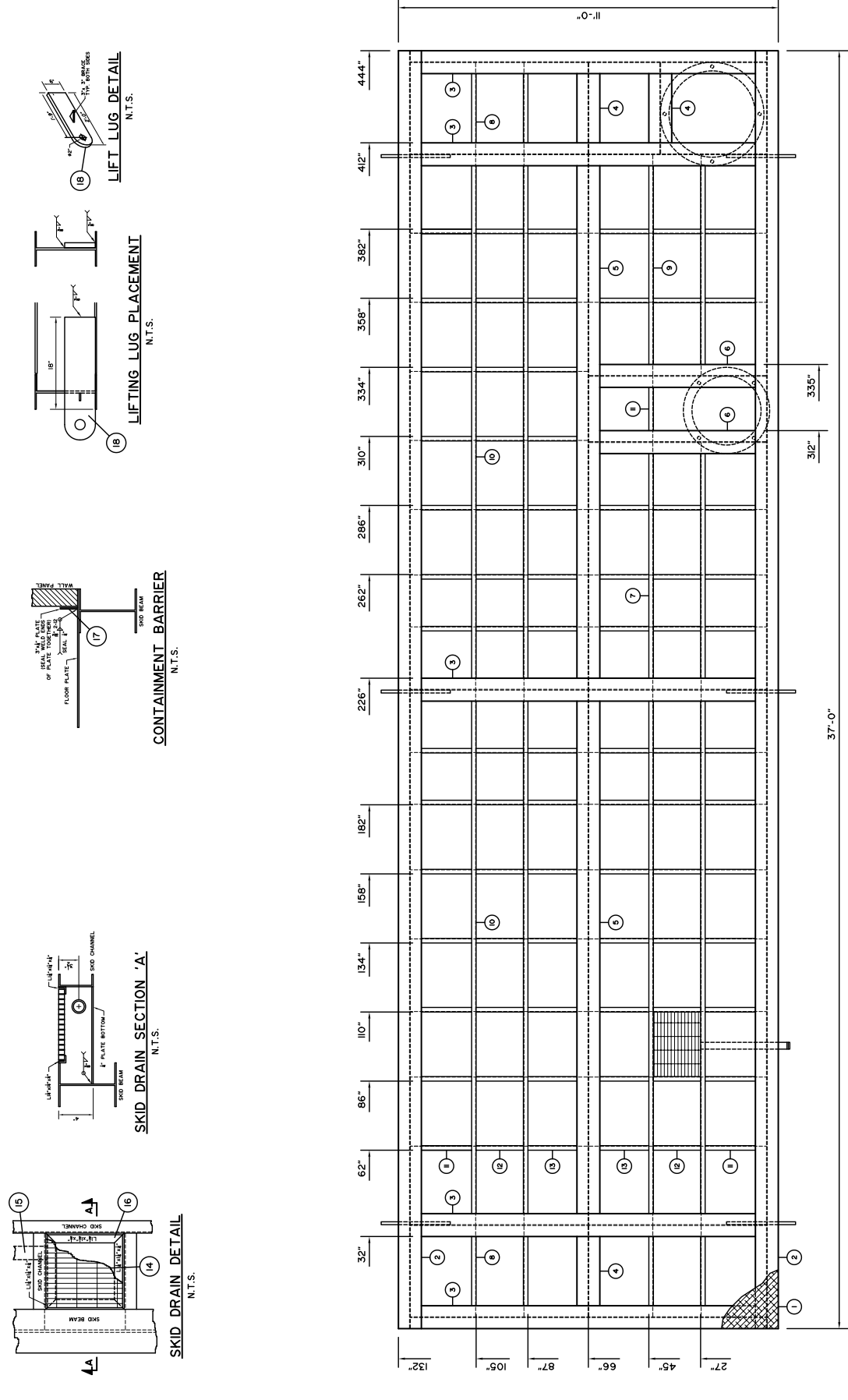
BREMLEY MECHANICAL SERVICES
 925-23rd Street S.W. Medicine Hat
 Alberta, Canada, T1A 8R1 (403) 526-3142

EOG RESOURCES LIMITED

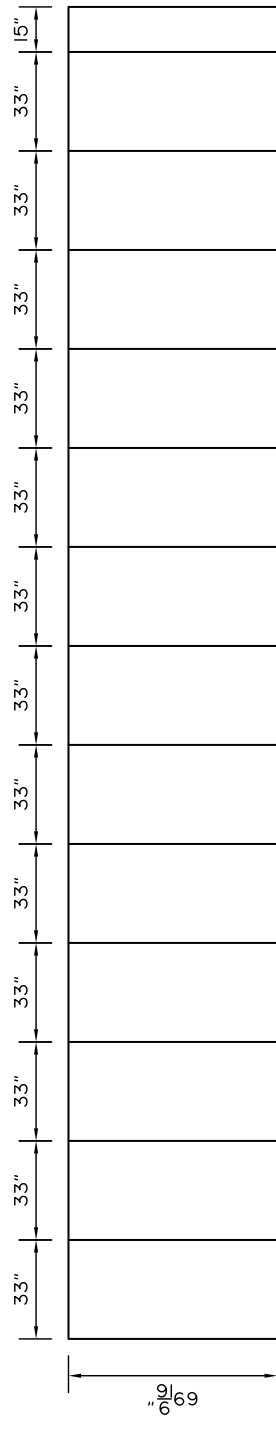
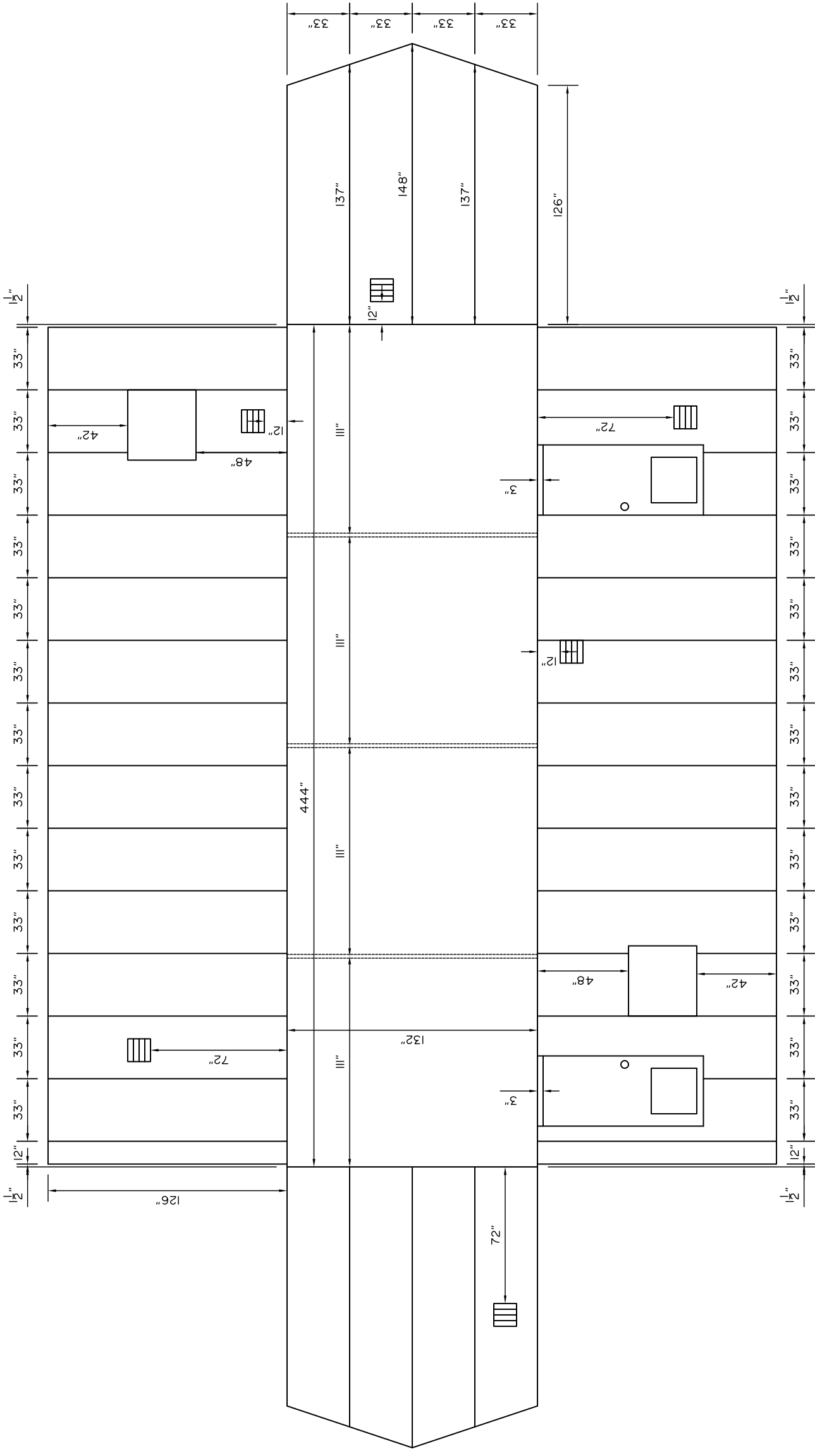
PROJECT
 8 WELL TEST SEPARATOR PACKAGE
 d-28-F/94-0-10

TITLE
 SKID

Wd. No.: 33506
 DATE: MM/DD/YY 01/22/10
 DRAWN BY: G. VANDERMOLEN
 REV. No.: 1
 SCALE: 3/8" = 1'-0"
 DATE: MM/DD/YY 05/18/10
 CAD No.: 33506-SKID



WELD DETAIL 1	WELD DETAIL 2	WELD DETAIL 3	WELD DETAIL 4	WELD DETAIL 5	WELD DETAIL 6	WELD DETAIL 7	WELD DETAIL 8	WELD DETAIL 9
COPING DETAIL FLOOR PLATE TO MEMBER (BOTTOM)	COPING DETAIL FLOOR PLATE TO MEMBER (TOP)	COPING DETAIL BEAM TO BEAM	COPING DETAIL CHANNEL TO BEAM	COPING DETAIL ANGLE TO BEAM	COPING DETAIL CHANNEL TO CHANNEL	COPING DETAIL CHANNEL TO CHANNEL	COPING DETAIL ANGLE TO CHANNEL	COPING DETAIL ANGLE TO ANGLE



(ROOF X 2)

BROMLEY MECHANICAL SERVICES
 925 - 23rd Street S.W., Medicine Hat, Alberta, Canada, T1A 8R1 (403) 526-3142

CLIENT: **EOG RESOURCES LIMITED**

PROJECT: **8 WELL TEST SEPARATOR PACKAGE d-28-F/94-0-10**

TITLE: **BUILDING**

Wd No.: 33506
 DRAWN BY: G. VANDERMOLEN REV. No.: 1 DATE: MM/DD/YY 06/18/10
 DATE: MM/DD/YY 01/22/10 SCALE: 3/16"=1' CAD No.: 33506-BUILDING

REV. No.	DATE	DESCRIPTION	BY	CHK'D	SIGN'D
06	18 10	AS BUILT	RB	RB	.
01	27 10	ISSUED FOR CONSTRUCTION	GV	GV	.