

GAS COMPRESSOR

UNIT: CB31

PERFORMANCE

Base Horsepower	95 HP
Packager	Enerflex
Year Built	1992
Suction Pressure (typical range) *	25 -75 psi (172 – 517 kPa)
Discharge Pressure (maximum) *	1000 psi (6897 kPa)
Flow Rate (typical range) *	0.25 – 0.60 mmscfd
Gas Source	Sweet, and dry
<i>*Performance is subject to confirmation on site specific process conditions</i>	

MAJOR EQUIPMENT

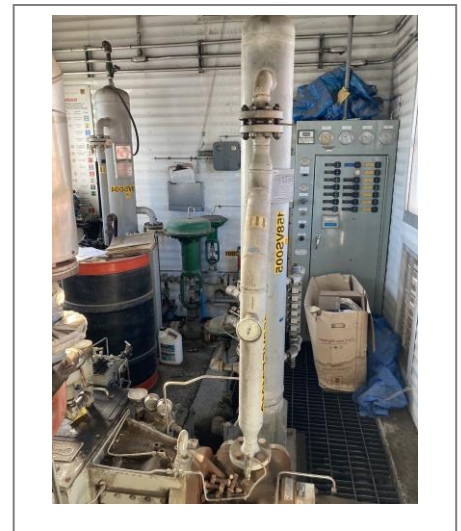
Gas Compressor	Included
----------------	----------

DRIVER

Style	Gas, CAT 3304NA
Rating	95 HP
Output (RPM)	1800 RPM
Serial #	N4F00482

COMPRESSOR

Make	Ariel
Model	JGP/2
Throws	2
Stages	2
Stroke	3"
Rated RPM	1800 RPM
Distance Pieces	STD
Serial #	F-8121



CYLINDERS

	Model	Bore	MAWP	Class	Serial Number
Cylinder 1	5 1/8JG	5.125"	865 PSIG	JG	C-60917
Cylinder 2	2.500 M	2.500	1440 PSIG	JG	C-11511

COOLER

Make	Air-X-Changer
Model	42EH
Louvres	Manual
Fan Drive (electric/jackshaft)	Jackshaft

Section	CRN	Serial Number	MAWP	Temp	RT	HT
Engine Jacket		778821.1	15 PSIG	-20/300°F		
Inter-Cooler	E9050.1	778821.2	1350 PSIG	-20/325°F		
After-Cooler	E9050.1	778821.3	1350 PSIG	-20/325°F		

SCRUBBERS

	Size	CRN	Serial Number	MAWP	Temp	RT	HT
Stage 1 Suction	8" x 64" S/S	K5518.1	81066-01	700 PSIG	-20/150°F	RT-2	
Stage 2 Suction	8" x 62" S/S	K6490.2	91066-02	1315 PSIG	-20/300°F	RT-2	

PULSATION

	Manuf.	CRN	Serial Number	MAWP	Temp	RT	HT
N/A							

PSV's

	Set Pressure	Size
Stage 1 Disch.		
Stage 2 Disch.		

CONTROL VALVES

	Make	Model	Size	Trim
Auto bypass				
Dump Valve	Fisher		1" NPT	
Recycle	Fisher	D	1: NPT	
Suction	Fisher	D	2" CL600	.500 Trim

CONTROL PANEL

Make	Altronic
Model	Pneumatic
HMI / PLC	Annohciator

END DEVICES

	Quantity
LEL Detection	Yes
H2S Detection	Yes
Fire Detection	Yes

SKID CONNECTIONS

Suction Inlet Flange	
Discharge Flange	
Flare	
Drain	

DRAIN TANK

Capacity	In Skid
----------	---------

SHIPPING DIMENSIONS

Width	12' 6"
Length	21' 0"
Height	17' 6"
Weight Estimate (dry)	TBC

CERTIFICATION

Vessel	ASME Sec. VIII Div. 1
Piping	ASME B31.3
Province(s) of Registration	AB, BC
Area Classification	Class 1 Zone 2
Service	Sweet