

GAS COMPRESSOR

UNIT: CB25

PERFORMANCE

Base Horsepower	95 HP
Packager	Enerflex
Year Built	2002
Suction Pressure (typical range) *	35 – 70 psi (240 – 480 kPa)
Discharge Pressure (maximum) *	900 psi (6200 kPa)
Flow Rate (typical range) *	0.2 – 0.9 mmscfd
Gas Source	Sweet, and dry
<i>*Performance is subject to confirmation on site specific process conditions</i>	

MAJOR EQUIPMENT

Gas Compressor	Included
Auxiliary Support Trailer	Included

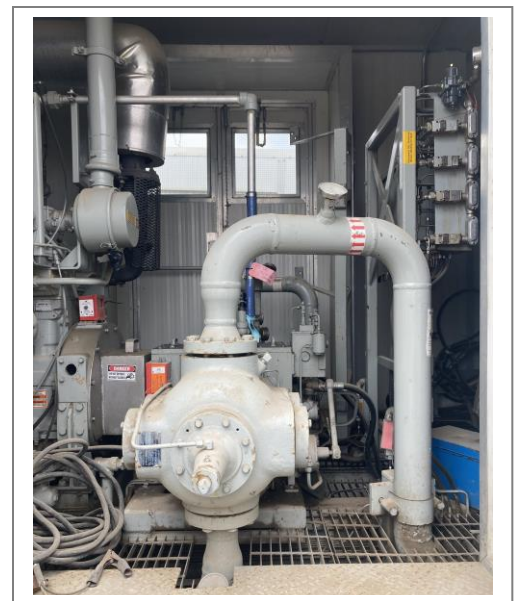
DRIVER

Style	Gas, CAT 3304NA
Rating	95 HP
Output (RPM)	1800 RPM



COMPRESSOR

Make	Ariel
Model	JGP/2
Throws	2
Stages	2
Stroke	3"
Rated RPM	1800 RPM
Distance Pieces	



CYLINDERS

	Model	Bore	MAWP	Class	Serial Number
Cylinder 1	5 1/8JG	5.125"	680 PSIG	JG	
Cylinder 2	3 5/8JG	3.625"	1320 PSIG	JG	

COOLER

Make	Air-X-Changer
Model	36EF
Louvres	Manual
Fan Drive (electric/jackshaft)	

Section	CRN	Serial Number	MAWP	Temp	RT	HT
Engine Jacket		8024.1	14 PSIG	-20/300°F		
Inter-Cooler	P5702.213	8024.2	1315 PSIG	-20/300°F		
After-Cooler	P5702.213	8024.3	1315 PSIG	-20/300°F		

SCRUBBERS

	CRN	Serial Number	MAWP	Temp	RT	HT
Stage 1 Suction	L7920.213	020415-03	1315 PSIG	-20/300°F		
Stage 2 Suction	K6585.213	020415-04	1315 PSIG	-20/300°F		

PULSATION

	Manuf.	CRN	Serial Number	MAWP	Temp	RT HT
N/A						

PSV's

	Set Pressure	Size
Stage 1 Disch.	680 PSIG	1" 600 X 2" 150
Stage 2 Disch.	1315 PSIG	1" 600 X 2" 150

CONTROL VALVES

	Make	Model	Size	Trim
Auto bypass	Fisher	D4	1" NPT	3/4"
Dump Valve	Fisher	D2	1" NPT	
Recycle				
Blowdown				

CONTROL PANEL

Make	Syntech/Jiro
Model	
HMI / PLC	

END DEVICES

	Quantity
LEL Detection	Not Currently Installed
H2S Detection	Not Currently Installed
Fire Detection	Not Currently Installed

SKID CONNECTIONS

Suction Inlet Flange	4" 600#
Discharge Flange	2" 600#
Flare	
Drain	1" NPT

DRAIN TANK

Capacity	TBC
----------	-----

SHIPPING DIMENSIONS

Width	5'-5/8" (2582 mm)
Length	23'-9" (7245mm)
Height	11'-3" (3442mm)
Weight Estimate (dry)	34,503 lbs (15,685 kg)

CERTIFICATION

Vessel	ASME Sec. VIII Div. 1
Piping	ASME B31.3
Province(s) of Registration	AB
Area Classification	Class 1 Zone 2
Service	Sweet