

**HORIZONTAL SEPARATOR**

**UNIT: R1132**

**PERFORMANCE**

Maximum Operating Pressure	1480 psi (10,204 kPa)
Minimum/Maximum Rated Operating Temperature of Vessel	-20°F/100°F (-29°C/38°C)
Liquid Storage Capacity (Operating @ 50%)	10.7 m <sup>3</sup> (67.4 bbl)
Maximum Vessel Gas Flow Rate @ 1,480 psi (10,204 kPa)	8,474 e <sup>3</sup> m <sup>3</sup> /d (300 mmscfd)
Maximum Vessel Liquid Rate based on 3-minute residence time	2,353 m <sup>3</sup> /d (14,800 bpd)
Maximum Piping Gas Flow Rate @ 1,480 psi (10,204 kPa)	8,710 e <sup>3</sup> m <sup>3</sup> /d (308 mmscfd)
Maximum Piping Liquid Flow Rate @ 1,480 psi (10,204 kPa)	236 m <sup>3</sup> /d (1,486 bpd)
Pressure Relief Valves Max Flow Rate Set @ 1300 psi (8963 kPa)	2,084 Sm <sup>3</sup> /min (73,785 SCFM)
System Maximum Gas Rate (PSV)	3,000 e <sup>3</sup> m <sup>3</sup> /d (106 mmscfd)

**VESSEL DIMENSIONS**

Vessel Diameter ID	66" (1676.4 mm)
Vessel Length S/S	360" (9144 mm)
Inlet Nozzle Size	CL600 12" (323.8 mm)
Gas Outlet Nozzle Size	CL600 12" (323.8 mm)
Water Outlet Nozzle Size	CL600 2" (60.3 mm)
Oil Outlet Nozzle Size	CL600 2" (60.3 mm)

**SKID CONNECTIONS**

Connection Inlet Size	CL600 12" (323.8 mm)
Connection Gas Outlet Size	CL600 12" (323.8 mm)
Connection Water/Oil Outlet Size	CL150 2" (60.3 mm)

**FLOW INSTRUMENTATION**

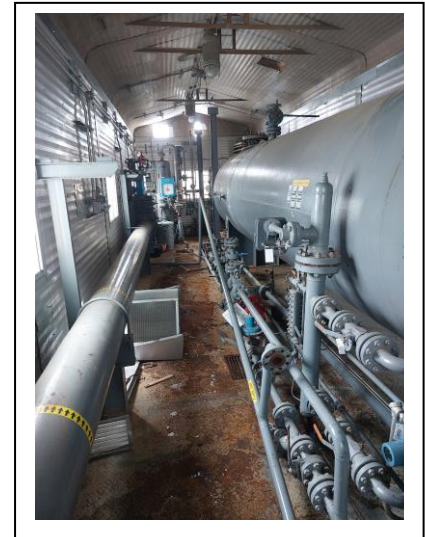
Gas Meter	Daniel 12" CL600 Senior Meter
Condensate Meter	Turbine
Water Meter	Not Installed
Differential Recorder	Not Installed

**SHIPPING DIMENSIONS**

Width	13' – 6" (4.12 m)
Length	47' – 4" (14.43 m)
Height	14' – 5" (4.38 m)
Weight Estimate	TBD

**CERTIFICATION**

Vessel	ASME Sec. VIII Div. 1
Piping	ASME B31.3
Province(s) of Registration	AB, BC
Sour Service	Yes





## EQUIPMENT SPECIFICATION SHEET