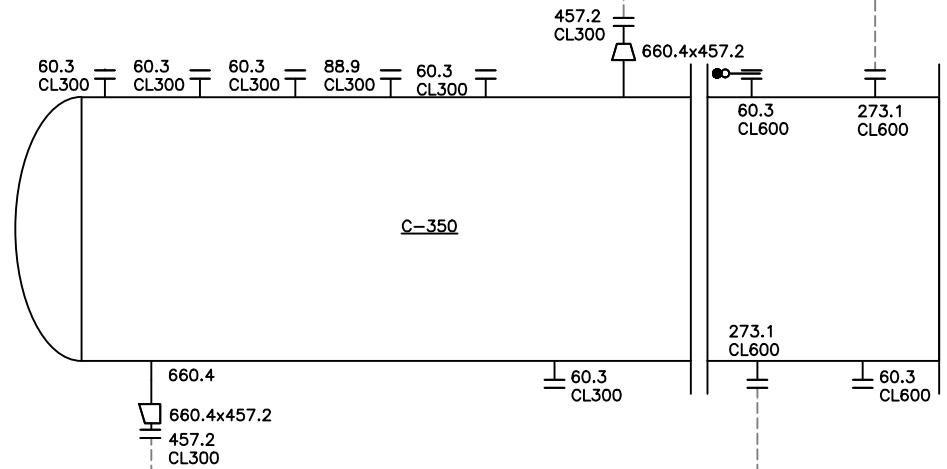


**C-350**  
**LIQUID HEAT EXCHANGER**  
 MAKE: ILSUNG CORPORATION  
 SHELL SIZE: 1275 mm ID x 3892 mm LONG  
 TUBE: 348 NOS 19.05 OD 2.11 mm THK U  
 SHELL MAWP: 3065 kPag/FV @200°C  
 SHELL SIDE TEMP: -45 TO 200°C  
 TUBE MAWP: 5157 kPag/FV @250°C  
 TUBE SIDE TEMP.: -45 TO 250°C  
 SN: 15-HE-002  
 CRN: W9959.2

PROCESS INLET  
 114.3 CL600 RF



COOLING FLUID RETURN  
 457.2 CL300 RF

PROCESS OUTLET  
 273.1 CL600 RF

COOLING FLUID SUPPLY  
 457.2 CL300 RF

REV	BY	DATE	DESCRIPTION	SPEC	MAX OPERATING CONDITIONS	TEST PRESSURE	INSULATE	X-RAY	HARDNESS	STRESS RELIEVE	CLIENT
0	FH	21/12/01	ISSUED FOR INFORMATION								

ALBERTA PERMIT TO PRACTICE # P07166			
PROJECT NUMBER HEX003			
DRAWN	FH	21/12/01	REVISION
CHECKED			△
APPROVED			SCALE
			NTS



Roska DBO Inc.  
 www.roskadbo.com  
 PH: (780) 532-8347

**ROSKA DBO INC.**  
**HEAT EXCHANGER**  
**HEX003 P & I D**  
**HEX003-101**