

MOTOR CONTROL CENTER

UNIT: MCC01

PERFORMANCE

Base Rating	800 Amps
Mount	Skid

MAIN DISCONNECT

Voltage	480 Volts
Amperage	Currently – 400 Amps Maximum – 800 Amps
Power Measurement	5200 ION
Voltage Relay	D85
Neutral Grounding Resister	5A

MCC

Make	Moeller MCC3000
Voltage	480 Volts
Phases	3 Phase
Amperage	800 Amps 60 Hz
Sections	9



TRANSFORMER (2 PANELS BELOW)

Voltage	480 V AC – 120/208 V AC
Power	45 kVA
Phases	3 Phase
Wire	4

DISTRIBUTION PANELS (2)

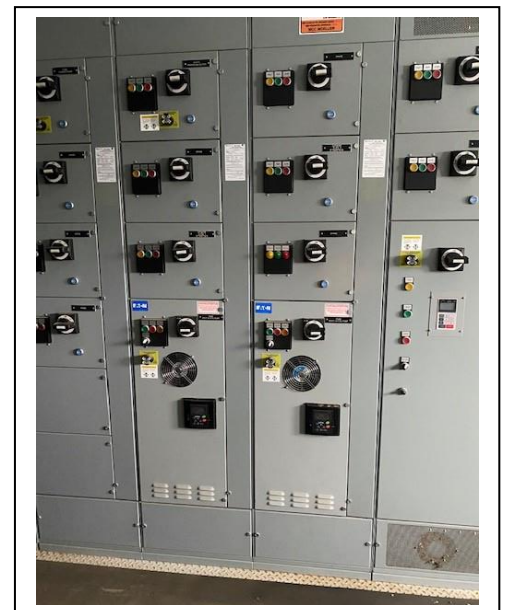
Voltage	120/208 Volts
Phases	1 Phase
CCTS	42

SECOND TRANSFORMER

Voltage	480 V AC – 120/208 VAC
Power	30 kVA
Phases	3 Phase
Wire	4

DISTRIBUTION PANEL

Voltage	120/208 Volts
Phases	1 Phase
CCTS	42



MOTOR STARTER(S)

Quantity				16
Voltage				480
Phases				3
Rated Horsepower	3	30 MCP	10 HP	
	8	15 MCP	7.5 HP	
	5	7 MCP	3 HP	

SAFETY PLC

Make	Allen Bradley		
Model	Compact Logix L3E		
Digital Inputs	3 * 16		
Digital Outputs (Source)	4 * 16		
Analog Inputs	4 * 8		
Analog Outputs	0		
Spare Slots	0		

PROCESS PLC

Make	Allen Bradley		
Model	SLC 5/05		
Digital Inputs	8 * 16		
Digital Outputs (Source)	5 * 16		
Digital Outputs (Relay)	4 * 16		
Analog Inputs	7 * 16		
Analog Outputs	1 * 8		
Spare Slots	2		

VARIABLE FREQUENCY DRIVES (4)

Voltage	480 Volts		
Rated Horsepower	2	30 MCP	10 HP
	2	150 MCP	60 HP

UPS (UNINTERRUPTED POWER SUPPLY)

Make	Hayley		
Model	UPS-905		
Includes	Battery Charger / Inverter		
Voltage	24 VDC		
Amperage	150 Amps		
Batteries	12		
Battery Make	Absolyte		
Rectifier Model	CCBT24D150F24H42A		



SPARE BREAKERS

1	20 Amp
2	30 Amp
4	40 Amp
2	50 Amp
2	60 Amp

SHIPPING DIMENSIONS

Width	13' – 9" (4.2 m)
Length	25' – 0" (7.62 m)
Height	16' – 5" (5.0 m)
Weight Estimate	16,000 lbs (7,257.5 kg)

CERTIFICATION

Package	CSA
Area Classification	General Purpose