

POWER GENERATOR

UNIT: GS35

PERFORMANCE

Base Rating	235kW (294kVA) / 230kW (288kVA)
Fuel	Natural Gas (Prime) / Diesel (Standby)
Prime Output	235kW (294kVA)
Standby Output	230 kW (388 kVA)
Mount	Skid
Voltage Output	480 VAC (3 Phase)
Frequency	60 Hz
Power Factor	0.8
Packager	Frontier Equipment LTD.
Year Built	2011

ENGINE (2)

Make	Waukesha	John Deere
Model	F18	6090HF484
Fuel Type	Natural Gas	Diesel
Cylinders	TBC	6
Displacement	TBC	9.0L (548 in ³)
Rating (@ 1800 rpm)	TBC	258hp (346kW)
Positive Air Shut-Off	No	Yes

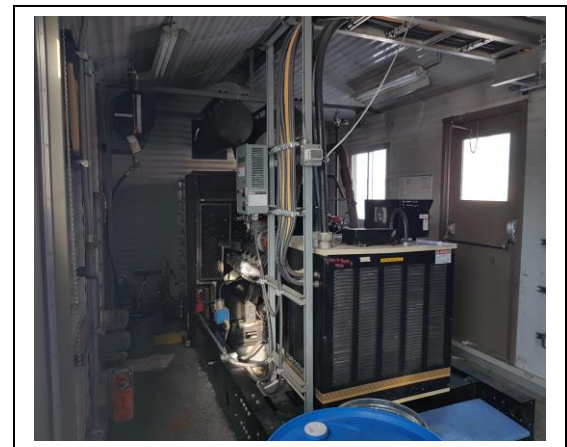


ENGINE FUEL CONSUMPTION

100% Rated Load	71.8 m ³ /hr	73.29 L/hr
75% Rated Load	55.9 m ³ /hr	58.79 L/hr
50% Rated Load	39.7 m ³ /hr	43.80 L/hr
25% Rated Load	24.8 m ³ /hr	27.48 L/hr
Emissions	Tier 4i	EPA Tier 3

GENERATOR (2)

Make	Kohler
Model	4UA13
RPM	1800



POWER CONSUMPTION

Building Total	5 kW
Voltage Input	120/208 V
Phase	3

COOLER

Max Ambient Operating Temp.	45 °C (113 °F)
-----------------------------	----------------

NOISE ATTENUATION

Make/Model	2 x Silex JDDS-4-SI6	Silex JDDS-6-SI6
Muffler Style	Hospital Grade	Hospital Grade
Rating	35-42 dBA	35-42 dBA

UNIT CONTROLS

Display	Decision-Maker 6000
---------	---------------------

ELECTRICAL CONTROLS

Generator Main Breaker	400 A (one per generator)
Transformer Breaker	3P-30A Fused Disconnect

FEATURES

120/208V Lighting Panel (30 CCT)
15 kVA Transformer (480V PRI: 208Y/120V SEC)
Schneider Electric Modicon M340 PAC
400A Circuit Breaker for Customer Load Connection
Discrete Alarm JB for Customer Controls Wiring
Fire and Gas Detection

SHIPPING DIMENSIONS

Width	13ft 3in (4.04 m)
Length	43ft 6in (10.67 m)
Heights	12ft 4in (3.76 m)
Weight Estimate	35,000 lb (15,876 kg)

CERTIFICATION

Package	CSA
Area Classification	General Purpose

