

- NOTES:
1. PSV DISCHARGE PIPING EXTENDED TO OUTSIDE BUILDING ABOVE EAVE HEIGHT.
 2. TUBE ALL INSTRUMENT VENT AND REGULATOR BONNETS TO VENT HEADER.
 3. LEVEL GAUGE VENTING LINES TO BE EXTENDED OUTSIDE BUILDING ABOVE EAVE HEIGHT.

PROJECT REVISION				REFERENCE DRAWINGS		NEXEN REVISION				APPROVAL			PROFESSIONAL STAMP	PERMIT STAMP	
REV No	DATE (YYYY-MM-DD)	DESCRIPTION	DRAFTED BY	CHECKED BY	APPROVED BY	DRAWING No	TITLE	REV No	DATE (YYYY-MM-DD)	DESCRIPTION	DRAFTED BY	CHECKED BY	APPROVED BY	DATE	DATE
								6	2017-12-08	ASB (2017 c-1-J HAZOP REVALIDATION) (NEXEN)	AM	AM			
								5	2016-12-02	AS-BUILT (DNS DESIGN - BC0082)	DSK	AM			
								4	2016-06-30	AS-BUILT (DNS DESIGN - BC0078)	DSK	MF/AM			
								3	2012-10-29	ISSUED FOR AS-BUILT	AKC	TAZ	FAA		
								2	2011-09-20	RE-ISSUED FOR CONSTRUCTION	LLJ	HEM	EMZ		
								1	2011-08-15	RE-ISSUED FOR CONSTRUCTION	LLJ	HEM	EMZ		
								0	2011-07-26	ISSUED FOR CONSTRUCTION	GKW	HEM	EMZ		

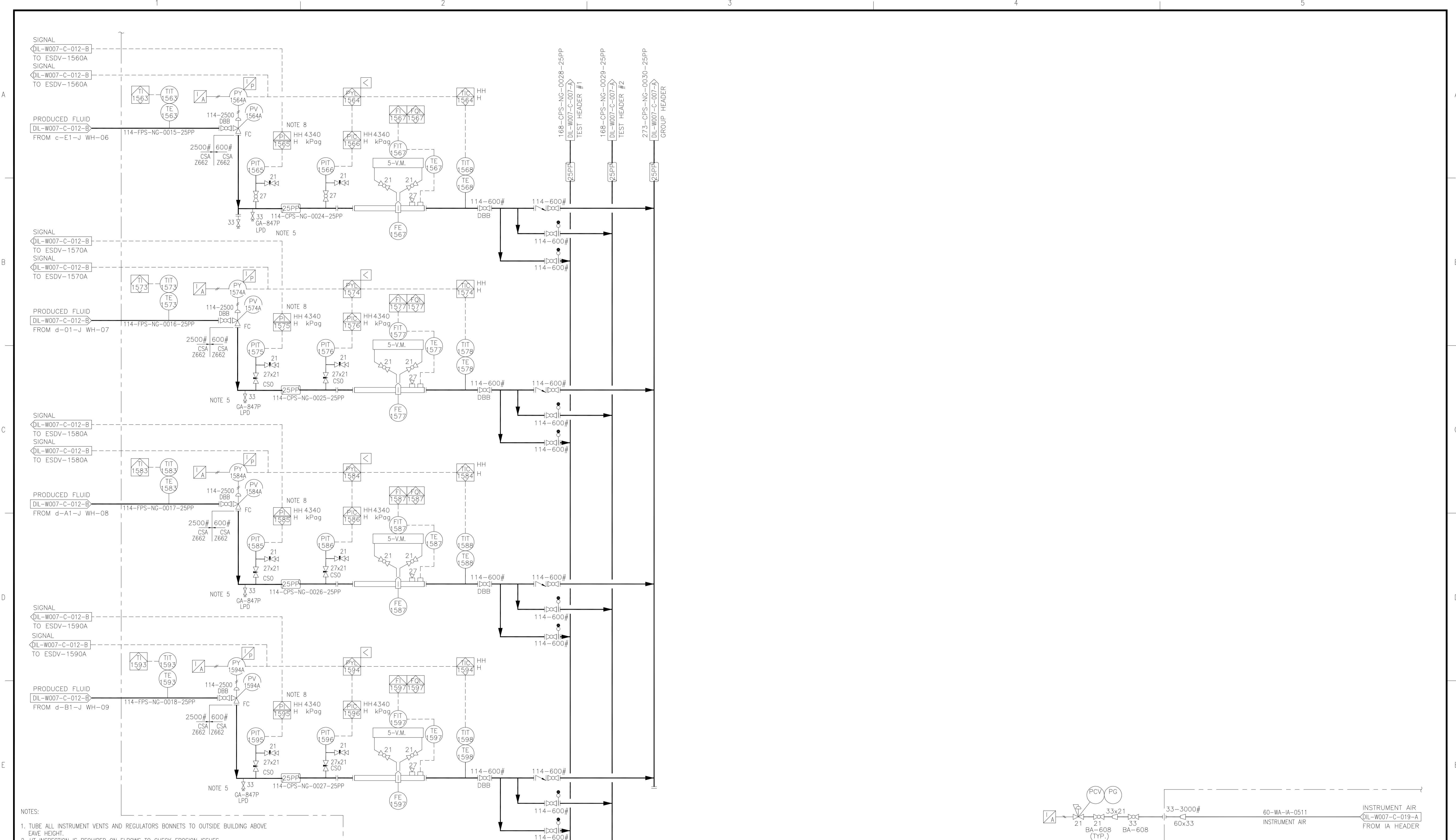


DILLY CREEK WELLSITE
SEPARATOR PACKAGE SKID
PIPING AND INSTRUMENTATION DIAGRAM

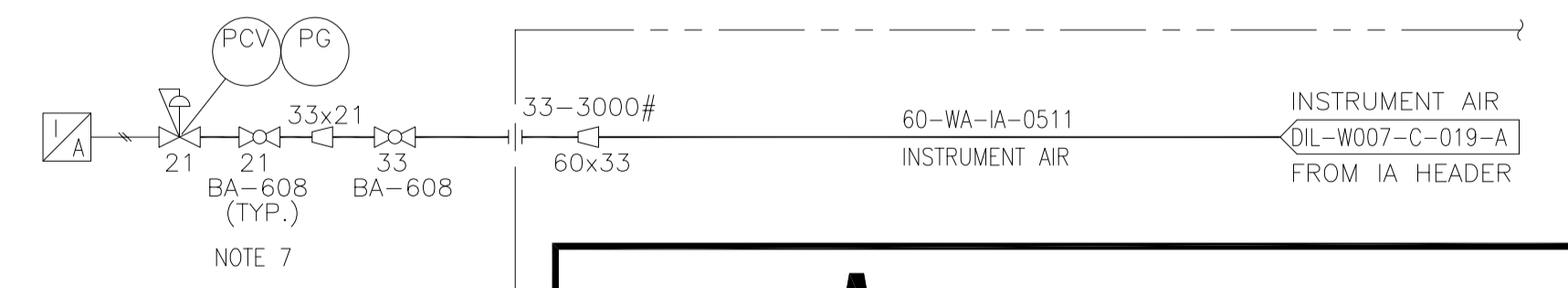
PROJECT NUMBER: BC0082
 LOCATION: c-1-J/94-0-8
 SCALE: NTS

EPC NAME: UPSIDE ENGINEERING LTD.
 EPC DRAWING No: 10610-0-DG-BC-00004.01

NEXEN DWG No: DIL-W007-C-009-A
 SHEET No: 1 OF 1
 REV: 6



- NOTES:
1. TUBE ALL INSTRUMENT VENTS AND REGULATORS BONNETS TO OUTSIDE BUILDING ABOVE EAVE HEIGHT.
 2. UT INSPECTION IS REQUIRED ON ELBOWS TO CHECK EROSION ISSUES.
 3. DELETED.
 4. ALL PIPING INSIDE BUILDING EXPOSED TO REGULAR PROCESS FLOWS RATED ABOVE 72°C MUST BE INSULATED FOR PERSONNEL PROTECTION.
 5. LOW POINT DRAINS SHALL HAVE SUFFICIENT WORK SPACE FOR ACCESS.
 6. BUILDING TEMPERATUR MEASUREMENT ONE BY TEST SEPARATOR; OTHER ONE AT END OF BUILDING.
 7. TYPICAL IA SUPPLY REGULATED TO ALL PNEUMATIC VALVES AND PUMPS.
 8. NEW SAFETY PLC.



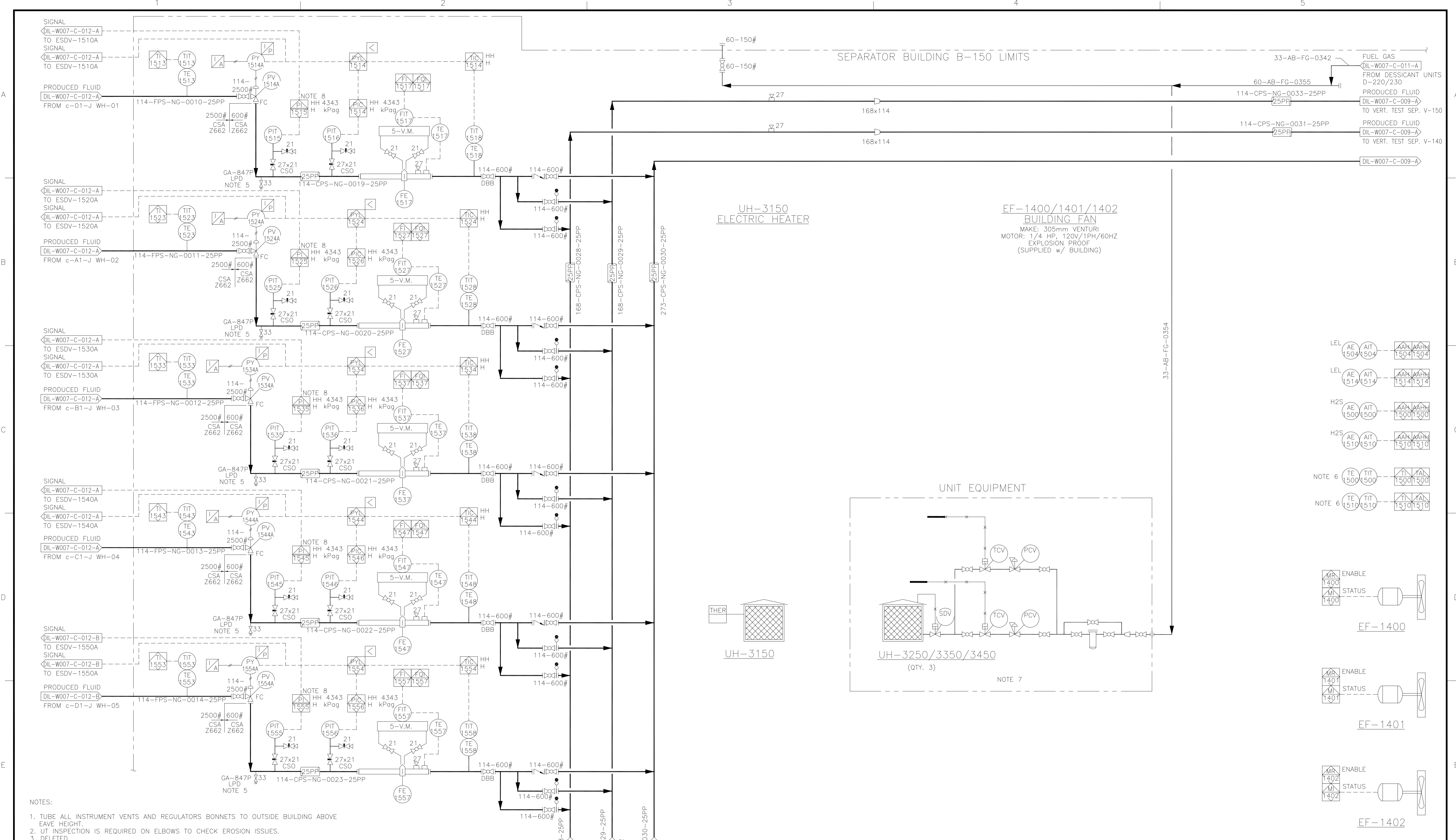
SEPARATOR BUILDING B-150 LIMITS

PROJECT REVISION				REFERENCE DRAWINGS		NEXEN REVISION		APPROVAL			PROFESSIONAL STAMP	PERMIT STAMP	
REV No	DATE (YYYY-MM-DD)	DESCRIPTION	DRAFTED BY	CHECKED BY	APPROVED BY	DRAWING No	TITLE	REV No	DATE (YYYY-MM-DD)	DESCRIPTION	DRAFTED BY	CHECKED BY	APPROVED BY
								4	2018-06-01	AS BUILT (AVINEON - NEBC MOC PROJECT)	DS	SM/DD	
								3	2016-06-10	AS-BUILT (DNS DESIGN - BC0078)	DSK	MF/AM	
								2	2014-12-10	ISSUED FOR AS-BUILT (SMCI NE13-02197)	AOC	TWJ	GJB
								1	2012-10-29	ISSUED FOR AS-BUILT	AKC	TAZ	FAA

PROJECT NUMBER 17PRO18		LOCATION c-1-J/94-0-8	SCALE NTS
EPC NAME UPSIDE ENGINEERING LTD.		EPC DRAWING No. 10610-0-DG-BC-00004.01	
NEXEN DWG No. DIL-W007-C-008-A		SHEET No. 1 OF 1	REV 4



DILLY CREEK WELLSITE
SEPARATOR PACKAGE SKID
PIPING AND INSTRUMENTATION DIAGRAM

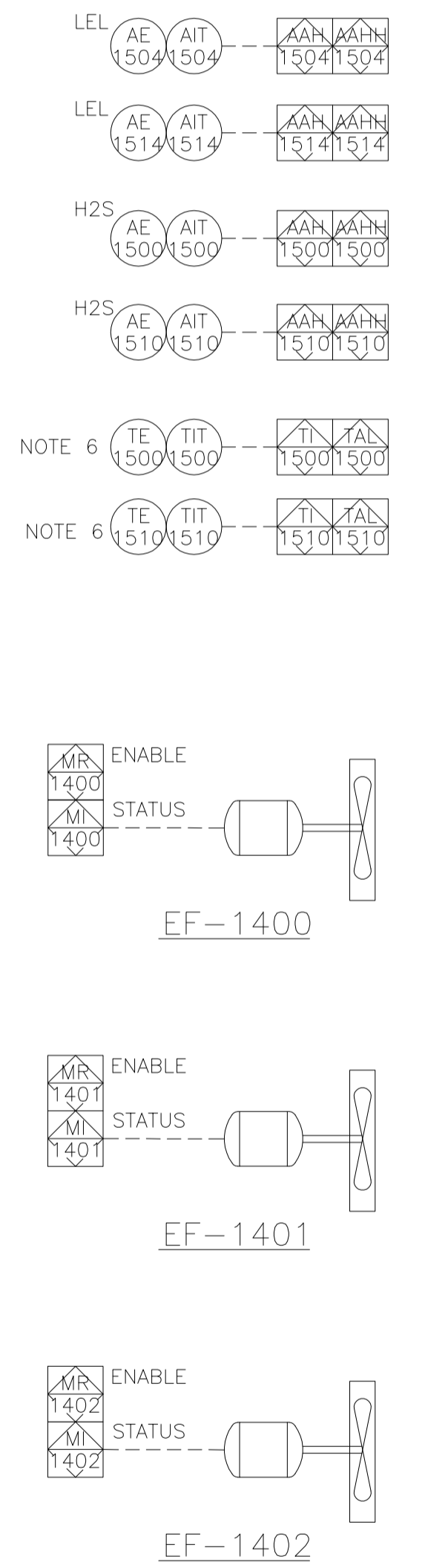
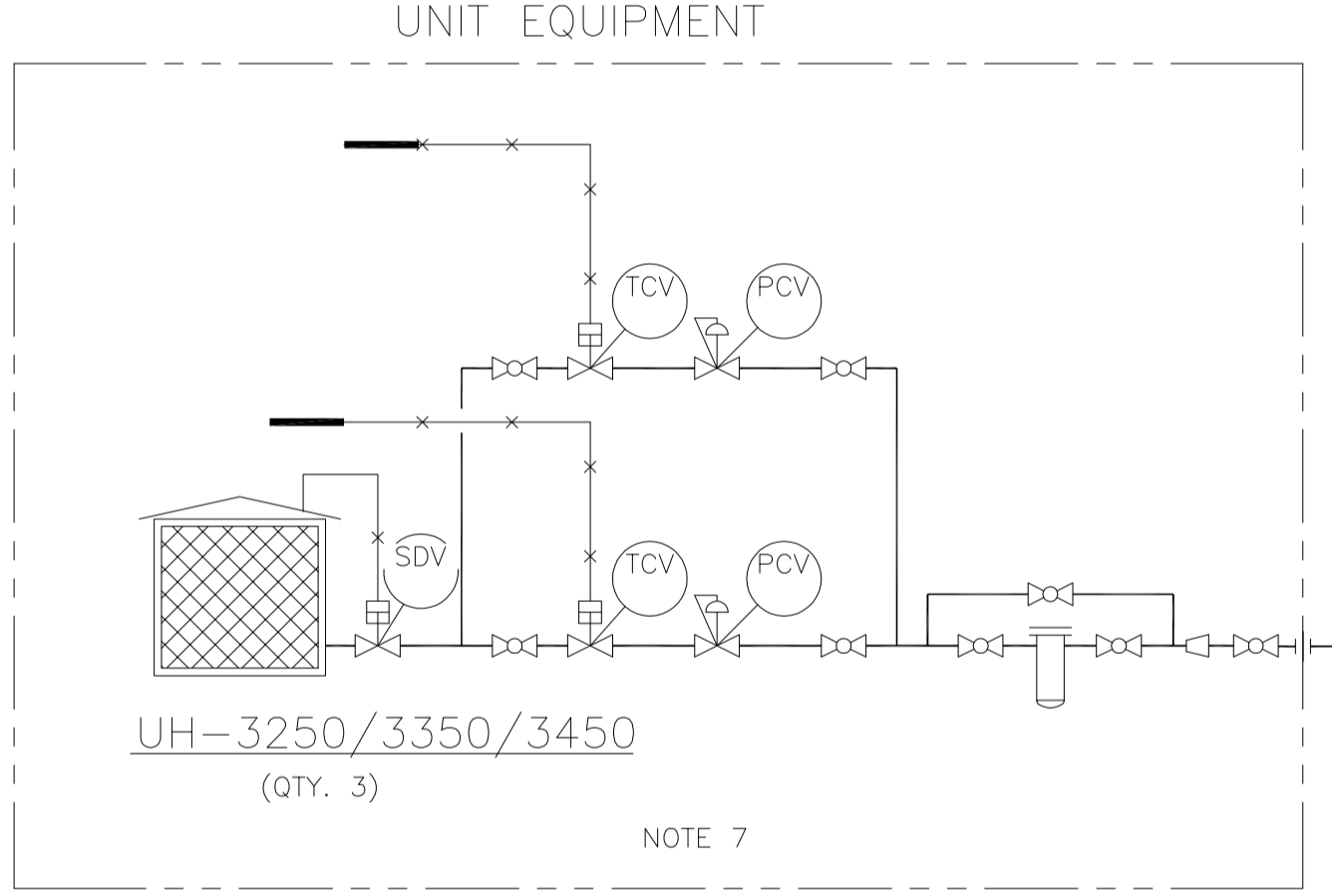


- NOTES:
1. TUBE ALL INSTRUMENT VENTS AND REGULATORS BONNETS TO OUTSIDE BUILDING ABOVE EAVE HEIGHT
 2. UT INSPECTION IS REQUIRED ON ELBOWS TO CHECK EROSION ISSUES.
 3. DELETED.
 4. ALL PIPING INSIDE BUILDING EXPOSED TO REGULAR PROCESS FLOWS RATED ABOVE 72°C MUST BE INSULATED FOR PERSONNEL PROTECTION.
 5. LOW POINT DRAINS SHALL HAVE SUFFICIENT WORK SPACE FOR ACCESS.
 6. BUILDING TEMPERATURE MEASUREMENT - ONE BY TEST SEPARATOR; OTHER ONE AT END OF BUILDING.
 7. ALL SEPARATOR PACKAGE SKID DRAWINGS (DIL-007-C-007/008/009/010/011) WILL BE UPDATED BY VENDOR INFORMATION.
 8. NEW SAFETY PLC.

SEPARATOR BUILDING B-150 LIMITS

UH-3150
ELECTRIC HEATER

EF-1400/1401/1402
BUILDING FAN
MAKE: 305mm VENTURI
MOTOR: 1/4 HP, 120V/1PH/60HZ
EXPLOSION PROOF
(SUPPLIED W/ BUILDING)



PROJECT REVISION				REFERENCE DRAWINGS				NEXEN REVISION				APPROVAL			PROFESSIONAL STAMP	PERMIT STAMP
REV No	DATE (YY-MM-DD)	DESCRIPTION	DRAFTED BY	CHECKED BY	APPROVED BY	DRAWING No	TITLE	REV No	DATE (YY-MM-DD)	DESCRIPTION	DRAFTED BY	CHECKED BY	APPROVED BY			
								4	2018-06-01	AS BUILT (AVINEON - NEBC MOC PROJECT)		DS	SM/DD			
								3	2016-06-10	AS-BUILT (DNS DESIGN - BC0078)		DSK	MF/AM			
								2	2014-12-10	ISSUED FOR AS-BUILT (SMCI NE13-02197)		AOC	TWJ	GJB		
								1	2012-10-29	ISSUED FOR AS-BUILT		AKC	TAZ	FAA		



DILLY CREEK WELLSITE
SEPARATOR PACKAGE SKID
PIPING AND INSTRUMENTATION DIAGRAM

PROJECT NUMBER 17PRO18	LOCATION c-1-J/94-0-8	SCALE NTS
EPC NAME SOLARIS - MCI	EPC DRAWING No. NE13-02197	
NEXEN DWG No	SHEET No 1 OF 1	REV 4

T-460
METHANOL STORAGE TANK
CAPACITY: 500 GAL
DOUBLE WALLED
STEEL TANK

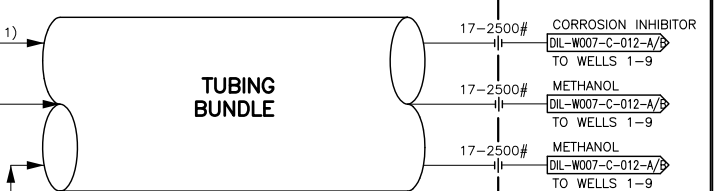
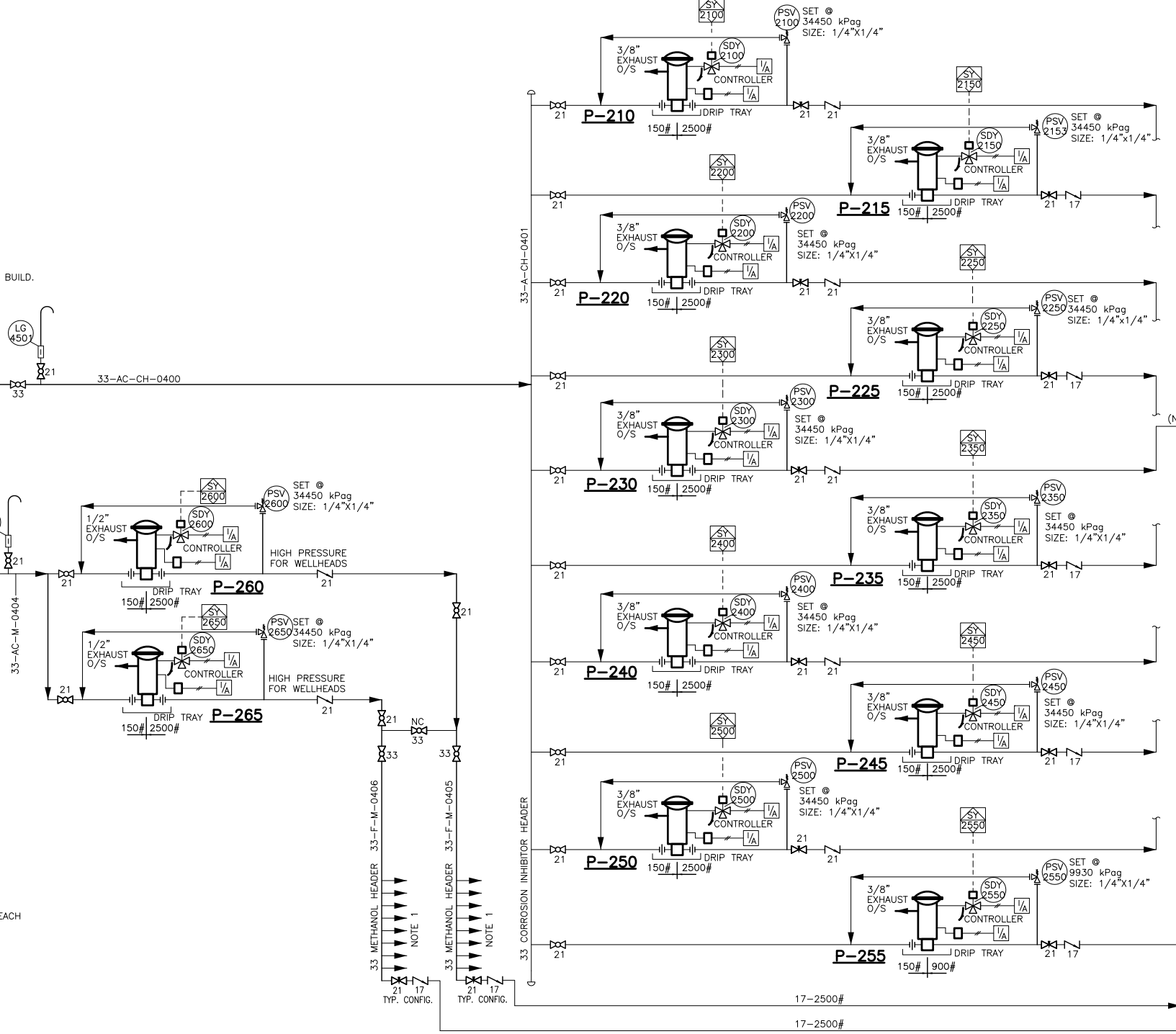
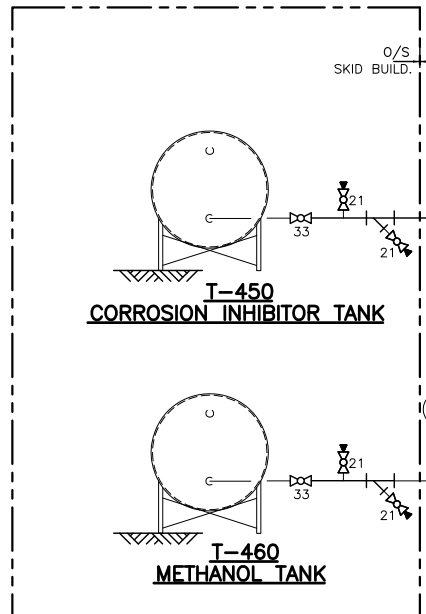
T-450
CORROSION INHIBITOR TANK
CAPACITY: 500 GAL
DOUBLE WALLED
STEEL TANK

P-260/265
METHANOL PUMP (HIGH PRESSURE)
DISCHARGE PRESSURE: 34450 kPag
RATE: 0-100L/DAY
MANUFACTURE: WILLIAMS
MODEL: CP500-V400-CRTC

P-210/215/220/225/230/235/240/245/250
CORROSION INHIBITOR PUMP
DISCHARGE PRESSURE: 34450 kPag
RATE: 0-10L/DAY
MANUFACTURE: WILLIAMS
MODEL: CP250-V225-CRTC

P-255
CORROSION INHIBITOR PUMP
DISCHARGE PRESSURE: 9930 kPag
RATE: 0-100L/DAY
MANUFACTURE: WILLIAMS
MODEL: CP500-V225-CRTC

SEPARATOR BUILDING B-150 LIMITS



NOTES:
1. THERE ARE A TOTAL OF NINE SUPPLY LINES, ONE LINE TO EACH WELLHEAD.
2. REV. 2 AS-BUILT APPLICABLE TO CLOUDED SECTION ONLY.

33 METHANOL HEADER 33-F-M-0406
33 METHANOL HEADER 33-F-M-0405
33 CORROSION INHIBITOR HEADER

LAST SAVED: 2016-06-04 3:02:47 PM BY: DAVE
PLOTTED: 2016-06-04 3:03:03 PM BY: DAVE

PROJECT REVISION				REFERENCE DRAWINGS				NEXEN REVISION				APPROVAL			PROFESSIONAL STAMP	PERMIT STAMP
REV No	DATE (YYYY-MM-DD)	DESCRIPTION	DRAFTED BY	CHECKED BY	APPROVED BY	DRAWING No	TITLE	REV No	DATE (YYYY-MM-DD)	DESCRIPTION	DRAFTED BY	CHECKED BY	APPROVED BY			
3	2016-06-10	AS-BUILT (DNS DESIGN - BC0078)									DSK	AM				
2	2013-03-11	ISSUED FOR AS-BUILT (MOC# NEBC-2012-000067, NE13-01975)									JKH	TWJ	MJH			
1	2012-10-29	ISSUED FOR AS-BUILT									AKC	TAZ	FAA			
0	2011-07-26	ISSUED FOR CONSTRUCTION									GKW	HEM	EMZ			

DILLY CREEK WELLSITE
SEPARATOR PACKAGE SKID
PIPING AND INSTRUMENTATION DIAGRAM

PROJECT NUMBER BC0078	LOCATION c-1-J/94-0-8	SCALE NTS
EPC NAME UPSIDE ENGINEERING LTD.	EPC DRAWING No. 10610-0-DG-BC-00004.01	SHEET No. 1 OF 1
NEXEN DWG No. DIL-W007-C-010-A		REV 3

DATE: _____

PATH: C:\Kikkert\Nexen_Dilly Creek\02 REVISION BLOCK UPDATES (101)\Done\W007\02\DIL-W007-C-010-A.dwg(Dave)

C-200
FUEL GAS COOLER
 MAKE: CALHEX
 MODEL:
 DUTY: 4 KW

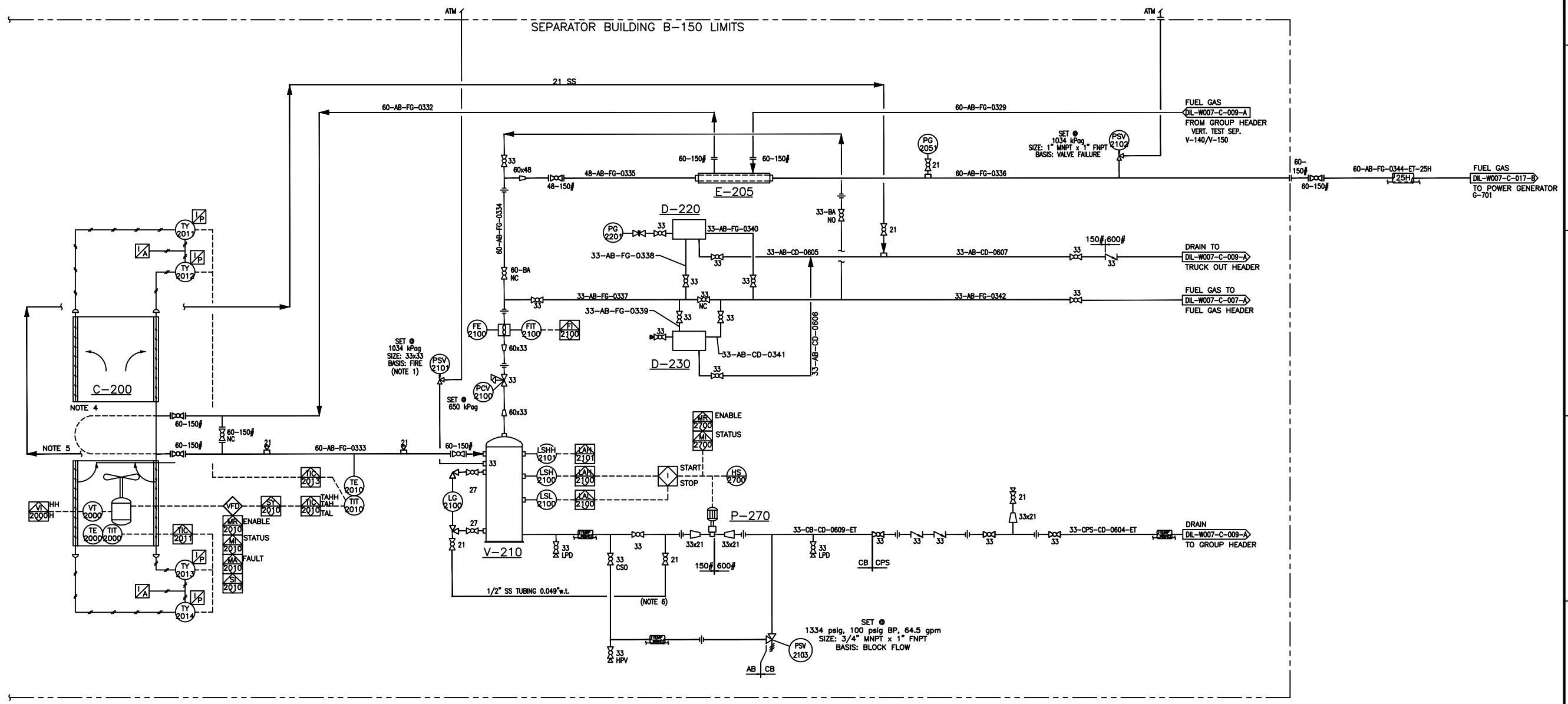
P-270
DRAIN PUMP
 MAKE: HYDROCELL
 FLOWRATE: 3270.6 L/D (0.6 GPM) (MAX.) @ 2,503 kPag (MAX.)
 MODEL: TBA
 MOTOR: 56C, 1/2HP, 230/480V, 3PH/60HZ, 3450 RPM
 EXPLOSION PROOF

V-210
FUEL GAS SCRUBBER
 SIZE: 324mm OD x 1524mm S/S
 D.P.: 1965 kPag @ -29/100°C, 3.0mm CA
 2 PHASE DESIGN, DRESSED 2 PHASE
 RADIOGRAPHY: RT-1
 PWHT: YES

D-220/230
DESSICANT UNITS
 MAKE: LOTECH MANUFACTURING
 MODEL: 70# DESI °C
 SIZE: 219mm OD x 1219mm LG
 D.P.: 1965 kPag @ -29/34.3°C, 3.2mm CA


E-205
FUEL GAS/FUEL GAS HEAT EXCHANGER
 DUTY: 0.3 KW
 CRN# 0H5722.1
 SN# 4523-4
 MAWP 250 PSI @ 212°F

SEPARATOR BUILDING B-150 LIMITS



- NOTES:
1. PSV DISCHARGE PIPING EXTENDED TO OUTSIDE BUILDING ABOVE EAVE HEIGHT.
 2. TUBE ALL INSTRUMENT VENT AND REGULATOR BONNETS TO VENT HEADER.
 3. LEVEL GAUGE VENTING LINES TO BE EXTENDED OUTSIDE BUILDING ABOVE EAVE HEIGHT.
 4. CHECK ELEVATION OF HEADER BOX TO ENSURE GRAVITY DRAINAGE OF COOLER AND ELIMINATION OF FREEZING CASE DURING LOSS OF POWER.
 5. TO DRAIN HEADER THROUGH 21 SS TUBING.
 6. VENT LINE LOCATED VERTICALLY AND AS CLOSE AS POSSIBLE TO PUMP SUCTION NOZZLE. TUBING TO BE RUN TO SIGHT GLASS WITH NO POCKETS SUCH THAT ANY VAPORS COLLECTING AT PUMP SUCTION WILL VENT BACK TO V-210.

ASBUILT
 THE SIGNATURE AND SEAL OF THE UNDERSIGNED ON THIS DRAWING CERTIFIES THAT THE DESIGN INFORMATION CONTAINED IN THIS DRAWING ACCURATELY REFLECTS THE ORIGINAL DESIGN UNDER TOYO PROJECT 16607 ONLY AND THE MATERIAL DESIGN CHANGES MADE DURING CONSTRUCTION, THAT WERE BROUGHT TO THE UNDERSIGNED'S ATTENTION. THIS DRAWING IS INTENDED TO INCORPORATE ADDITIONAL CHANGE ORDERS AND OTHER MATERIAL DESIGN CHANGES, BUT NOT NECESSARILY ALL SITE INSTRUCTIONS. THE UNDERSIGNED DOES NOT WARRANT OR GUARANTEE, NOR ACCEPT ANY RESPONSIBILITY FOR THE ACCURACY OR COMPLETENESS OF THE AS-CONSTRUCTED INFORMATION SUPPLIED BY OTHERS CONTAINED IN THIS DRAWING.



nexen
 A CNOC LIMITED COMPANY

**DILLY CREEK WELLSITE
 SEPARATOR PACKAGE SKID
 PROCESS AND INSTRUMENTATION DIAGRAM**

PROJECT NUMBER 17PR018_	LOCATION c-1-J/94-0-8	SCALE NTS
EPC NAME UPSIDE ENGINEERING LTD.	EPC DRAWING No. 10610-0-DG-BC-00004.01	REVISION 1 OF 1
NEXEN DWG No. DIL-W007-C-011-A	SHEET No. 1 OF 1	REV 5

PROJECT REVISION			REFERENCE DRAWINGS		NEXEN REVISION		APPROVAL			
REV No	DATE (YYYY-MM-DD)	DESCRIPTION	DRAWING No	TITLE	REV No	DATE (YYYY-MM-DD)	DESCRIPTION	DRAWN BY	CHECKED BY	APPROVED BY
5	2017-06-29	ASB 2017 c-1-J HAZOP REVALIDATION (NEXEN)						AM	AM	AM
4	2016-07-27	AS-BUILT (TOYO #16607)						RRS	HUDA	JXK
3	2016-06-17	AS-BUILT (DNS DESIGN - BC0078)						DSK	MF/AM	
2	2014-05-07	ASB NEBC-2013-000183 (NEXEN)						KFA	SH	
1	2012-10-29	ISSUED FOR AS-BUILT						AKC	TAZ	FAA