

**WATER TRANSFER PUMP UNIT**
**UNIT: TP104**
**PERFORMANCE**

See pump curve

**DRIVER 1**

Make	Reliance
Model	X184JP
Horse Power	5 HP
RPM	1730 RPM
Phase	3
Volts	230 / 460
Amps	14 / 7
Hertz	60

**DRIVER 2**

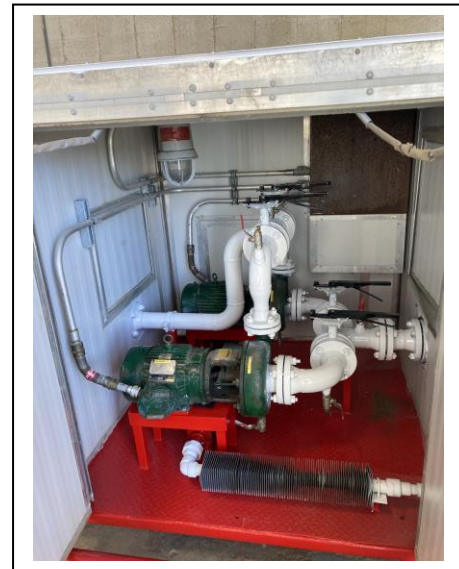
Make	Reliance
Model	X184JP
Horse Power	5 HP
RPM	1730 RPM
Phase	3
Volts	230 / 460
Amps	14 / 7
Hertz	60

**TRANSFER PUMP 1**

Make	Mission
Model	1180 Type S
Type	Centrifugal
Size	2x3 R11
Impeller	7"

**TRANSFER PUMP 2**

Make	Mission
Model	1180 Type S
Type	Centrifugal
Size	2x3 R11
Impeller	7"



**SUCTION PIPING**

Maximum Allowable Working Pressure	285 psi (1965 kPa)
Size	3" (88.9 mm)
Connection	Fig 206 Hammer Union

**DISCHARGE PIPING**

Maximum Allowable Working Pressure	285 psi (1965 kPa)
Size	3" (88.9 mm)
Connection	Fig 206 Hammer Union

**SHIPPING DIMENSIONS**

Width	6' – 3" (1.91 m)
Length	6' – 4" (1.93 m)
Height	5' – 5" (1.65 m)
Weight Estimate	2,100 lbs (953 kg)



**CERTIFICATION**

Drive	Class 1 - Group D
Pump	CSA
Piping	ASME B31.3

**PUMP CURVE**

