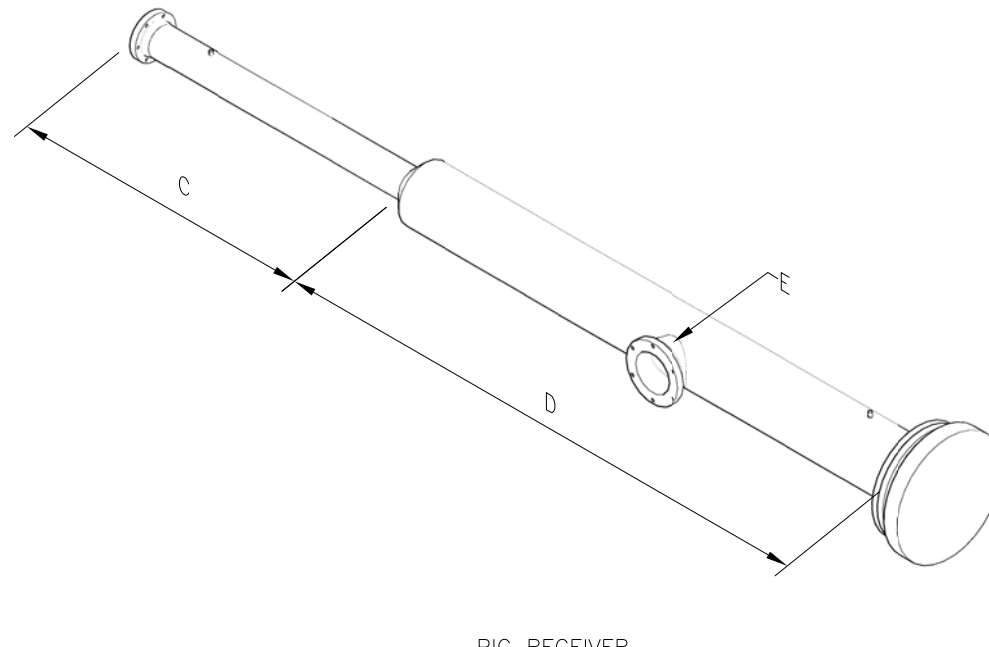


PIG SENDER



PIG RECEIVER

SIZE CHART (IMPERIAL)					
PIPELINE SIZE	A	B	C	D	E
3"	5'-11"	1'-7 3/4"	5'-3"	2'-7 1/2"	2"
4"	6'-5"	2'-0"	5'-7"	2'-9 1/2"	3"
6"	7'-0"	1'-8"	7'-3"	2'-7 1/2"	4"
8"	7'-0"	1'-8"	7'-3"	2'-7 1/2"	6"
10"	5'-11"	2'-0"	5'-11"	5'-11"	6"
12"	6'-11"	2'-7 1/2"	6'-11"	6'-11"	8"

SIZE CHART (METRIC)					
PIPELINE SIZE	A	B	C	D	E
88.9	1800	500	1600	800	60.3
114.3	1950	600	1700	850	88.9
168.3	2140	500	2200	800	114.3
219.1	2140	500	2200	800	168.3
273.1	1800	600	1800	1800	168.3
323.9	2100	800	2100	2100	219.1

D	MH	16/07/27	RE-ISSUED FOR PROPOSAL
C	MH	16/06/06	RE-ISSUED FOR PROPOSAL
B	MH	16/04/15	ISSUED FOR PROPOSAL
A	MH	16/04/01	ISSUED FOR REVIEW
REV	BY	DATE	DESCRIPTION
DRAWN	MH	16/04/01	PROJECT NUM -
CHECKED			REVISION NUM $\Delta$
APPROVED			SCALE NTS



Roska DBO Inc.  
www.roskadbo.com  
PH: (780) 532-8347

TYPICAL  
-  
**PIG BARREL SIZING**  
-