

**INJECTION PUMP**

**UNIT: PUM028**

**PERFORMANCE**

|                            |                          |
|----------------------------|--------------------------|
| Maximum Operating Pressure | 5,000 psi (34,474 kPa)*  |
| Maximum Flow Rate          | 379 m <sup>3</sup> /day* |

\*Contact Roska Engineering for Detailed Specifications

**INJECTION DRIVE**

|             |                      |
|-------------|----------------------|
| Model       | Teco HE Plus Premium |
| Horse Power | 150 HP               |
| Maximum RPM | 1783 RPM             |
| Phase       | 3                    |
| Volts       | 460 V                |
| Hertz       | 60 Hz                |
| VFD         | Yes                  |

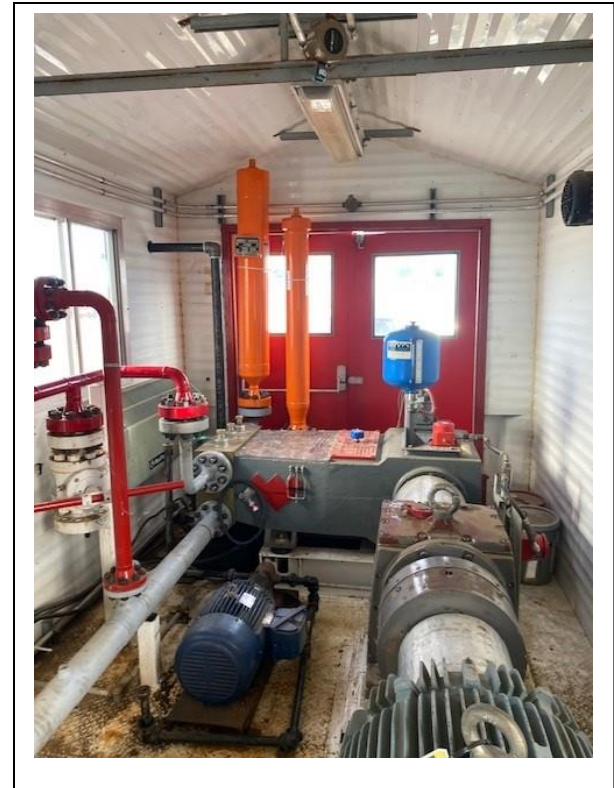
**PUMP**

|                            |                 |
|----------------------------|-----------------|
| Make                       | Weatherford     |
| Model                      | W165H           |
| Plungers                   | 3               |
| Installed Plunger Diameter | 2.75"           |
| Maximum Input              | 165 HP (123 kW) |
| Maximum RPM                | 400 RPM         |
| Stroke Length              | 5" (127 mm)     |

**POWER REQUIREMENTS**

|                 |        |
|-----------------|--------|
| Motor Only      | 120 kW |
| Building Total  | 140 kW |
| Main Disconnect | 400 A  |
| Voltage Input   | 480 V  |
| Phase           | 3      |

\*\*Approximate Power Requirements\*\*



**SHIPPING DIMENSIONS**

|                 |                       |
|-----------------|-----------------------|
| Width           | 10.5 ft (3.2 m)       |
| Length          | 25.5 ft (7.8 m)       |
| Height          | 10.5 ft (3.2 m)       |
| Weight Estimate | 23,000 lb (10,233 kg) |

**CERTIFICATION**

|                              |                      |
|------------------------------|----------------------|
| Area Classification Interior | Class I, Division II |
| Area Classification Exterior | General Purpose      |
| Piping                       | ASME B31.3           |

**SUCTION PIPING**

|                                    |                     |
|------------------------------------|---------------------|
| Maximum Allowable Working Pressure | 675 psi (4,654 kPa) |
| Size                               | 3" (76.2 mm)        |
| Connection (External)              | 3" CL300 RF         |

**DISCHARGE PIPING**

|                                    |                        |
|------------------------------------|------------------------|
| Maximum Allowable Working Pressure | 5,000 psi (34,474 kPa) |
| Size                               | 2" (50.8 mm)           |
| Connection (External)              | 2" CL2500 RTJ          |



**SHUTDOWNS**

|                                  |
|----------------------------------|
| High/Low Discharge Pressure      |
| High/Low Suction Pressure        |
| Manual ESD                       |
| Vibration Switch                 |
| H <sub>2</sub> S & LEL Detection |
| Standard Engine Kills            |
| Leak Detection in Stuffing Box   |

**FEATURES**

|  |
|--|
| Nord SK 92W Gearbox                      |
| Suction and Discharge Pulsation Dampener |
| Exhaust Fan                              |
| Ruffneck Electric Heater                 |
| Discharge MC-III Flow Meter              |



## EQUIPMENT SPECIFICATION SHEET

|                     |
|---------------------|
| 460 V NEMA 3R VFD   |
| Kenco Lube Oil Tank |
| Baird PSV           |