

BOOSTER PUMP

UNIT: PUM012

PERFORMANCE

Maximum Flow Rate	700 USGPM (2.65 m ³ /min)
Maximum Head	80 ft
Maximum Allowable Working Pressure	
Minimum NPSH	5ft

INJECTION DRIVE

Make	Teco Westinghouse
Model	AEHH8N
Horse Power	25 HP
Maximum RPM	1765 RPM
Phase	3
Volts	230/ 460 V
Hertz	60 Hz
VFD Compatible	YES

PUMP

Make	Eagle
Model	A100 L
Size	4x3x13
Impeller Size	9" (228.6 mm)

SUCTION PIPING

Maximum Allowable Working Pressure	275 psi (1,900 kPa)
Size	4" (114.3 mm)
Connection	CL150 RF

DISCHARGE PIPING

Maximum Allowable Working Pressure	275 psi (1,900 kPa)
Size	4" (114.3 mm)
Connection	CL150 RF

DRAIN PIPING

Maximum Allowable Working Pressure	275 psi (1,900 kPa)
Size	3/4" (19.1 mm)
Connection	3/4" Tubing



SHIPPING DIMENSIONS

Width	8' (2.4 m)
Length	12' (3.7 m)
Height	10' (3.0 m)
Weight Estimate	9,000 lbs (4,082 kg)

CERTIFICATION

Electrical Class	Class 1 Zone 2
Piping	ASME B31.3
Electrical	Built to CSA

POWER REQUIREMENTS

Motor Only	24 kW (65 kW on Startup)
Building Total	34 kW
Voltage Input	480 V / 120 V
Phase	3 / 1

Approximate Power Requirements

SHUTDOWNS

Manual ESD Button
H ₂ S & LEL Detection
High Level Sump
Adjustable Baird Pressure Relief Valve

FEATURES

Basket Strainer On Inlet Piping
Equipped with Heater and Lights
Exhaust Fan
Pump Recycle Line
Built In Sump



Company: Eagle Pump
 Name:
 Date: 3/1/2018



Pump:

Size: L 4x3-13
 Type: A100_ANSI
 Synch speed: 1800 rpm
 Curve: H-2111
 Specific Speeds:
 Dimensions:
 Speed: 1750 rpm
 Dia: 9 in
 Impeller:
 Ns: ---
 Nss: ---
 Suction: 4 in
 Discharge: 3 in

Search Criteria:

Flow: 550 US gpm
 Head: 61 ft

Fluid:

Produced Water
 SG: 1.05
 Viscosity: 1 cP
 NPSHa: ---
 Temperature: 68 °F
 Vapor pressure: 1 psi a
 Atm pressure: 14.7 psi a

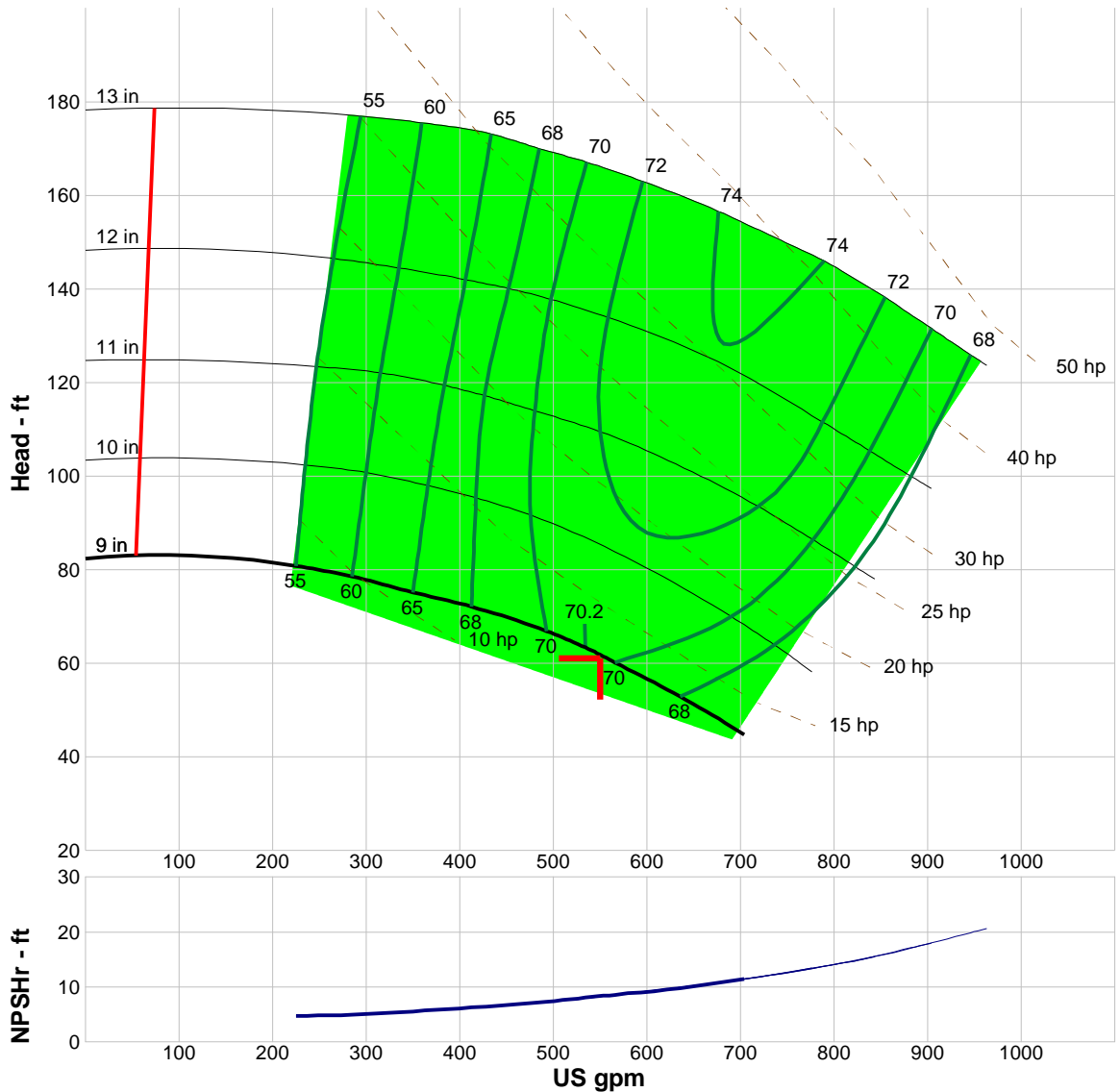
Motor:

Standard: NEMA
 Enclosure: TEFC
 Sizing criteria: Max Power on Design Curve
 Size: 15 hp
 Speed: 1800
 Frame: 254T

Pump Limits:

Temperature: 350 °F
 Pressure: 350 psi g
 Sphere size: 0.625 in
 Power: ---
 Eye area: ---

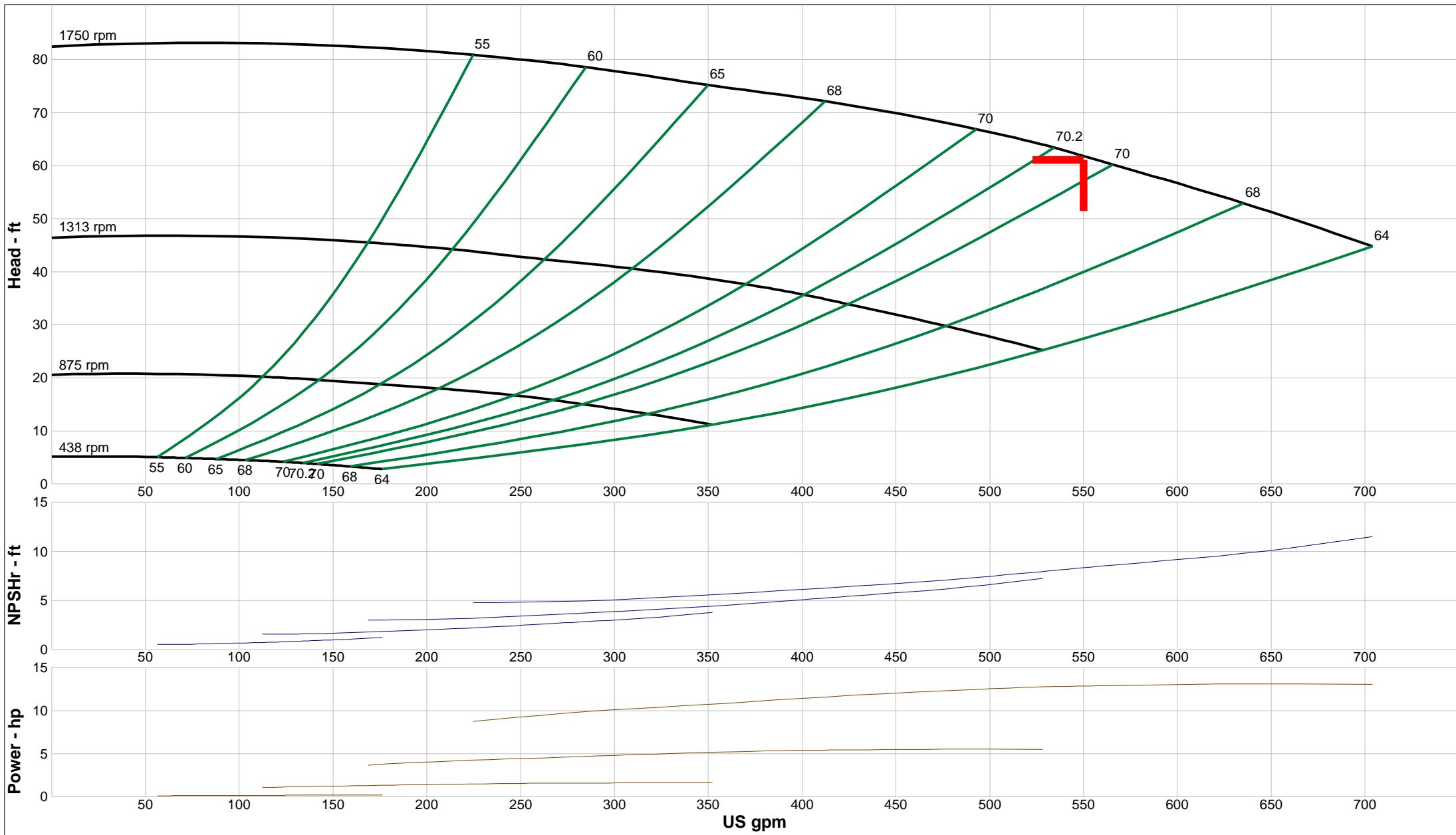
---- Data Point ----	
Flow:	550 US gpm
Head:	61.8 ft
Eff:	70%
Power:	12.8 hp
NPSHr:	8.34 ft
---- Design Curve ----	
Shutoff head:	82.4 ft
Shutoff dP:	37.5 psi
Min flow:	53.4 US gpm
BEP:	70% @ 534 US gpm
NOL power:	13.1 hp @ 635 US gpm
-- Max Curve --	
Max power:	46.7 hp @ 963 US gpm



ANSI Flange Rtg=300psi RFF. Press. shown is @ 100°F for Carb. Steel. (Stainless = 250psi.) Consult factory for higher temps.

Performance Evaluation:

Flow US gpm	Speed rpm	Head ft	Efficiency %	Power hp	NPSHr ft
660	1750	50	67	13.1	10.4
550	1750	61.8	70	12.8	8.34
440	1750	70.3	69	11.9	6.64
330	1750	76.2	63	10.5	5.4
220	1750	80.9	55	8.67	4.79



ANSI Flange Rtg=300psi RFF. Press. shown is @ 100°F for Carb. Steel. (Stainless = 250psi.) Consult factory for higher temps.

Company: Eagle Pump
 Name:
 3/1/2018

Eagle Pump & Compressor Ltd.
 Catalog: Eagle Pump ANSI & Sump 60 Hz, Vers 1
 A100_ANSI - 1800

Size: L 4x3-13
 Speed: 438 - 1750 rpm
 Dia: 9 in
 Curve: H-2111

