

**POWER GENERATOR**

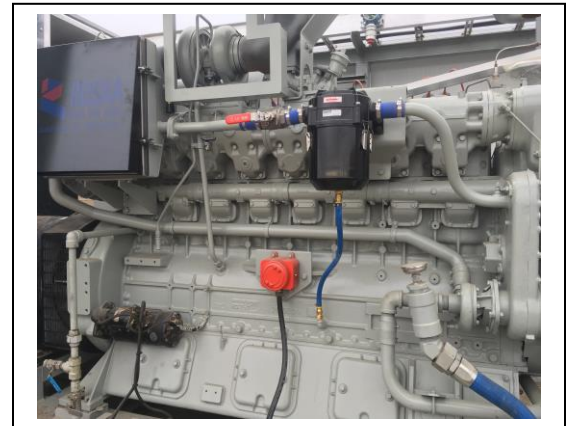
**UNIT: GS23**

**PERFORMANCE**

Base Rating	400 kW (500 kVA)
Fuel	Natural Gas
Prime Output	395 kW (493 kVA)
Service Type	Prime
Mount	Skid
Voltage Output	600 VAC (3 Phase)
Frequency	60 Hz
Power Factor	0.8
Packager	Propager
Year Built	2011

**ENGINE**

Make	Waukesha
Model	H24GL
Fuel Type	Natural Gas
Cylinders	8
Displacement	24.0 L (1462 in <sup>3</sup> )
Rating	530 hp (395 kW) @ 1800 rpm



**ENGINE FUEL CONSUMPTION**

100% Rated Load	3774CF/hr @ 25-50psig
Fuel Connection	2" CL150 or 1" NPT
Emissions	EPA Tier 3

**GENERATOR**

Make	Stamford
Model	HC54D1149752
RPM	1800

**POWER CONSUMPTION**

Building Total	18 kW
Voltage Input	600 VAC
Phase	3



**NOISE ATTENUATION**

Make	Noise Solutions Zeron 55 M7
Model	EESVXS070008XXX
Rating	36-53 dBA

**UNIT CONTROLS**

Display	PanelView Plus 700
---------	--------------------

**ELECTRICAL CONTROLS**

Generator Main Breaker	800 A
------------------------	-------

**LOAD BANK**

Make	Power Systems Plus Inc.
Model	SLBM-200
Automatic Controller	200kW, 4 x 50kW Steps

**FEATURES**

120/208VAC Lighting Panel (20 CCT)
15 kVA Transformer (600V PRI: 120/240V SEC)
120VAC Catadyne Heater
Neutral Grounding Resistor with monitoring relay
Electrical Controls Junction Box for customer alarms
Emergency ESD Pushbutton Station
15 hp Engine Cooler Fan (600VAC) with Size 2 Starter
1600A 600VAC Bus inside Generator Control Panel
LEL Gas Detection

**SHIPPING DIMENSIONS**

Width	9 ft, 9in (2.97 m)
Length	39 ft 1in (10.67 m)
Heights	10 ft, 9in (3.28 m)
Weight Estimate	46,300 lb (21,000kg)

**CERTIFICATION**

Package	CSA
Area Classification	General Purpose

