

FILTER POT SKID

UNIT: FPS001

PERFORMANCE

| | |
|-------------------------------------------------------|-------------------------------------------|
| Maximum Operating Pressure | 250 psi (1,722 kPa) |
| Maximum Liquid Flow Rate | See attached flow rates of filter bags |
| Minimum/Maximum Rated Operating Temperature of Vessel | -20°F/200°F (-29°C/93°C) |
| Filter Screen Differential Pressure Max | 35 psi (241 kPag) |
| Filter Screen Sizes | 1, 5, 10, 25, 50, 100 and 200 Micron (µm) |
| Number of Vessels | 4 |

VESSEL DIMENSIONS (X4)

| | |
|------------------------|--------------|
| Vessel Diameter | 20" (508 mm) |
| Vessel Length S/S | 30" (762 mm) |
| Inlet Nozzle Size | 3" (88.9 mm) |
| Outlet Nozzle Size | 3" (88.9 mm) |
| Drain Nozzle Size | 2" (60.3 mm) |
| Filter Bags per Vessel | 3 |
| Bag Type | P2 |

SUCTION PIPING

| | |
|------------------------------------|---------------------|
| Maximum Allowable Working Pressure | 250 psi (1,722 kPa) |
| Size | 6" (168.3 mm) |
| Connection | CL150 RF |

DISCHARGE PIPING

| | |
|------------------------------------|---------------------|
| Maximum Allowable Working Pressure | 250 psi (1,722 kPa) |
| Size | 6" (168.3 mm) |
| Connection | CL150 RF |

DRAIN PIPING

| | |
|------------------------------------|---------------------|
| Maximum Allowable Working Pressure | 250 psi (1,722 kPa) |
| Size | 2" (60.3 mm) |
| Connection | CL150 RF |

SKID CONNECTIONS

| | |
|--------|---------------|
| Inlet | 6" (168.3 mm) |
| Outlet | 6" (168.3 mm) |
| Drain | 2" (60.3 mm) |



SHIPPING

| | |
|-----------------|----------------------|
| Width | 9' (2.74 m) |
| Length | 25' (7.62 m) |
| Height | 10' (3.05 m) |
| Weight Estimate | 2,400 lbs (1,089 kg) |

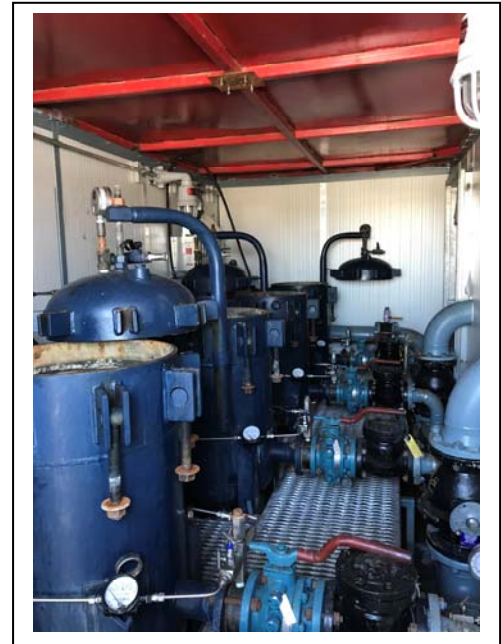
CERTIFICATION

| | |
|-----------------------------|-----------------------|
| Vessel | ASME Sec. VIII Div. 1 |
| Piping | ASME B31.3 |
| Province(s) of Registration | AB, BC, SK |
| Sour Service | Internally Coated |

POWER REQUIREMENTS

| | |
|----------------|--------|
| Building Total | 0.2 kW |
| Voltage Input | 120 V |
| Phase | 1 Ø |

Approximate Power Requirements



SHUTDOWNS

| |
|-----------------------------------------------|
| Insulated Building with 2 Doors and 2 Windows |
| High LEL Alarm |
| High H2S Alarm |
| Indicator Beacons (Status, LEL, H2S) |

FEATURES

| |
|------------------------------------------|
| Building Equipped with Heater and Lights |
| Inlet Pressure Relief Valve |
| Filter Pot Bypass |

