

SMOKELESS FLARE SYSTEM

UNIT: CBC02

BLOWER PERFORMANCE

Maximum Gas Flow Rate	4,000 CFM
Maximum Discharge Pressure	50" W.G.
Output (RPM)	3534 RPM

MOTOR DATA

Make	Baldor Reliance
Model	EM4114T-G
Horsepower	50 HP
RPM	3600 RPM
Voltage	230/460
Phase	3
Hertz	60 Hz
Enclosure Type	TEFC
Frame	326TS
VFD Compatible	YES

FEATURES

Westech 50 HP VFD	On-Skid
Flex Hose	On-Skid
200' of 3C #3 AWG Tech 90 1000 V	On-Skid
Inlet Flange Guard	On-Skid

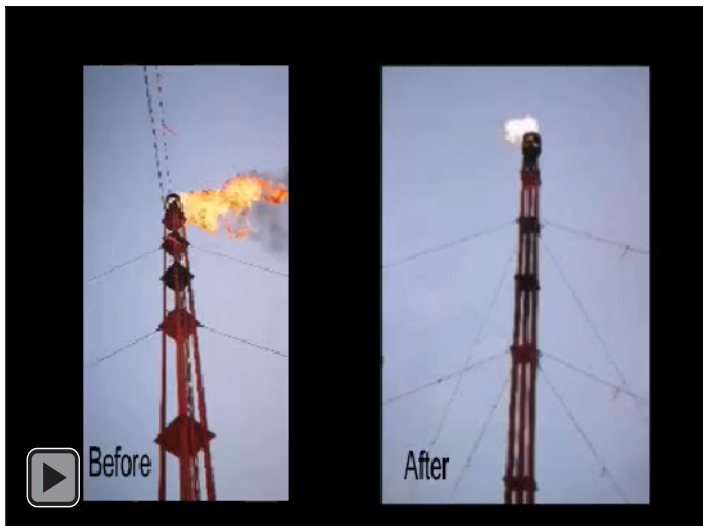
MANIFOLD DATA

Outlet Connection	4" (114.3 mm) CL150 RF
Outlet Connection with Hoses	4" (114.3 mm) Fig 206

WITHOUT BLOWER



WITH BLOWER



SHIPPING DIMENSIONS

Width	8' (2.44 m)
Length	17' 4" (5.29 m)
Height	8' 8" (2.64 m)
Estimated Weight	TBD

POWER REQUIREMENTS

Kilowatts	42 kW
Voltage	460 V
Phase	3

